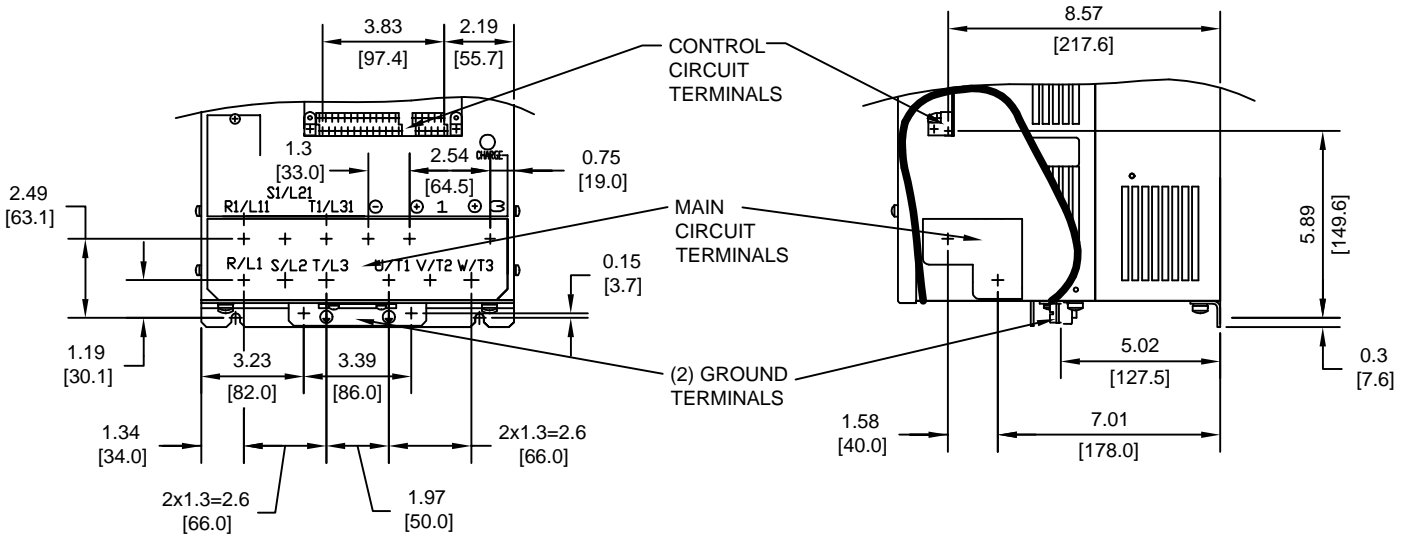


TERMINAL AND WIRING DETAILS (SCALE 1:6)

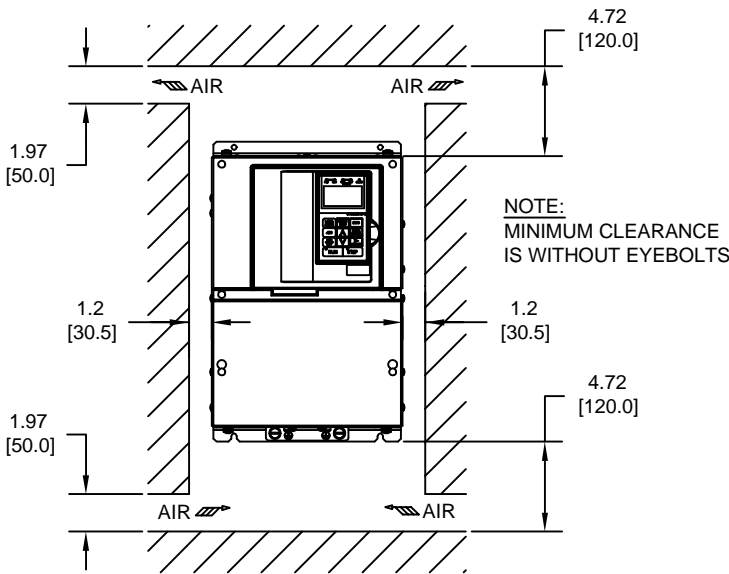


TERMINAL AND WIRE SPECIFICATIONS FOR MAIN CIRCUIT AND GROUND

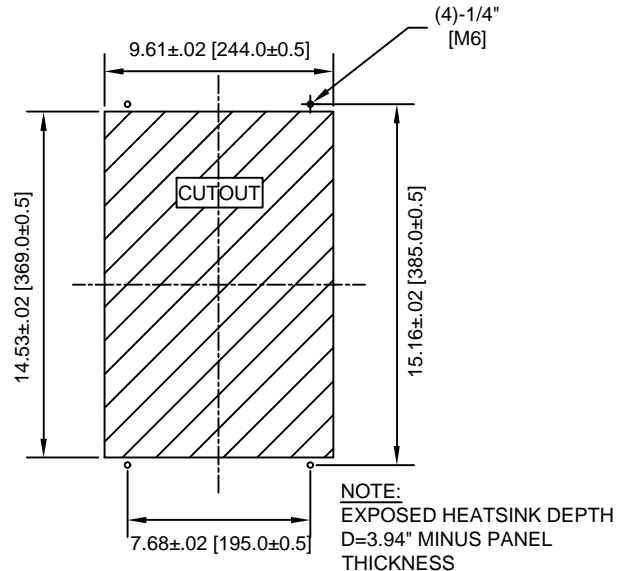
MODEL #	TERMINAL SYMBOL	TERMINAL SCREW	CLAMPING TORQUE lb.in.(N.m.)	WIRE RANGE AWG(mm ²)
2022	R/L1, S/L2, T/L3, U/T1, V/T2, W/T3	M8	79.2 TO 88.0 (9.0 TO 10.0)	8-1/0 (8-60)
	⊕3	M6	35.2 TO 44.0 (4.0 TO 5.0)	8-4 (8-22)
	⊕	M8	79.2 TO 88.0 (9.0 TO 10.0)	SEE NOTE

NOTE: REFER TO APPLICABLE CODES FOR PROPER WIRE TYPE AND SIZE

MINIMUM INSTALLATION CLEARANCES (SCALE 1:10)



PANEL CUTOUT FOR EXTERNAL HEATSINK MOUNTING CONFIGURATION (SCALE 1:8)



FOR ADDITIONAL DETAILS AND SPECIFICATIONS, CONSULT MANUAL

TOLERANCES/REFERENCES:	
-	
-	
-	
-	
-	
UNITS:	SCALE:
IN[mm]	BY VIEW

YASKAWA
A World of Automation Solutions™

YASKAWA ELECTRIC AMERICA, INC.
Corporate Headquarters
2121 Norman Drive South
Waukegan, IL 60085
1-800-YASKAWA
http://www.yaskawa.com

DRAWN:	J. MATTAS	DATE:	5-6-03	TITLE:	F7 DIMENSION DRAWING
CHECKED:	M. RUCINSKI	DATE:	5-28-03	FRAME SIZE 5	
TECH:	J. CAIRO	DATE:	5-13-03	IP00 ENCLOSURE	
APPROVED:	T. SASADA	DATE:	5-28-03	F7U2022	
ORIGINAL DESIGN:	-	DATE:	-	SIZE	REVISION
				A	A
					PAGE
					2 of 2
				DRAWING #:	DD.F7.FR5.IP00.01