

C/C: FP65□	INPUT VOLTAGE 3-PHASE (VAC)	WEIGHT Kg (lb)	COOLING FANS
2343□□□	200 TO 240	110 (242)	3
2396□□□		114 (251)	3
4361□□□	380 TO 480	116 (255)	2
4414□□□		122 (268)	3

□ denotes A-Z

YASKAWA

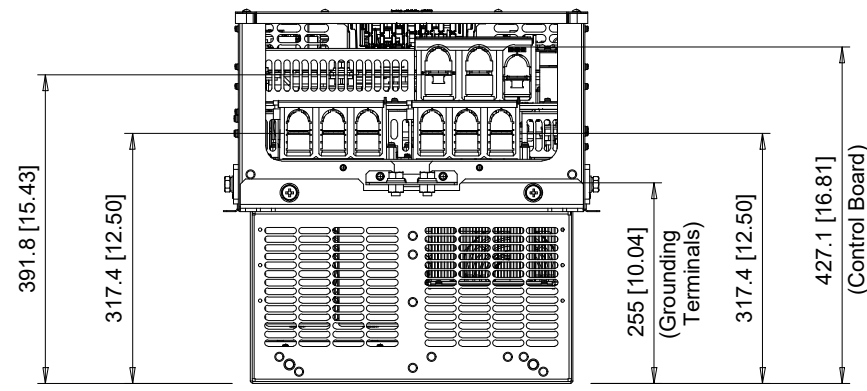
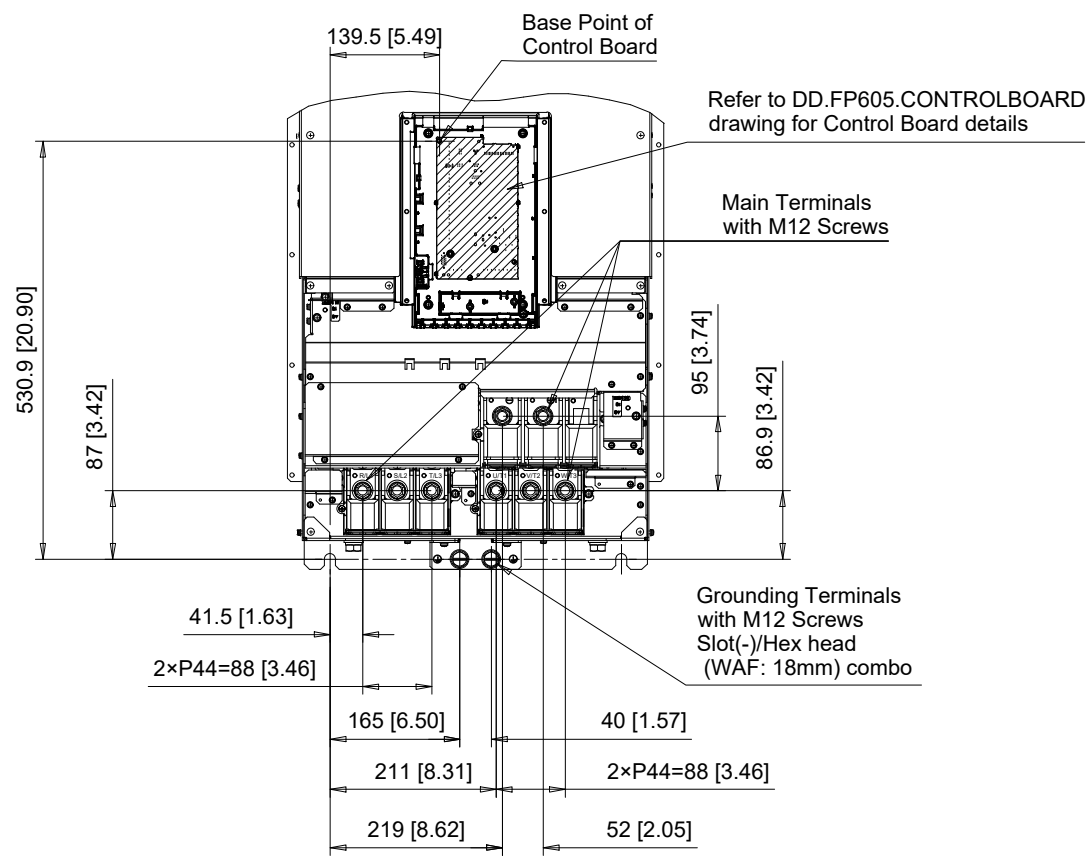
UNITS MM [IN]
SCALE 1:12

DRWN. J. MATTAS 6-23-22
CHKD. J. PIOTROWSKI 6-30-22
TECH. L. UDDIN 7-1-22
APRV. J. CAIRO 7-19-22

TITLE
FP605 DIMENSION DRAWING
FRAME SIZE 10
BACKSIDE TYPE 12 ENCLOSURE

SIZE A PAGE 1 OF 3
DWG.NO. DD.FP605.FR10.FLNG

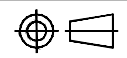
REV 0



C/C: FP65□	TERMINAL SYMBOL	WIRE RANGE AWG (mm ²)	TERMINAL SCREW	CLAMPING TORQUE N.m. (lb.in.)
2343□□□	R/L1, S/L2, T/L3	2/0 - 300 x 2P (70 - 150 x 2P)	M12	35 (310)
2396□□□	U/T1, V/T2, W/T3	2/0 - 300 x 2P (70 - 150 x 2P)	M12	35 (310)
4361□□□	-, +1	4/0 - 400 x 2P (120 - 205 x 2P)	M12	35 (310)
4414□□□	⊕	1 - 350 (120 - 240)	M12	32 - 40 (283 - 354)

□ Denotes A-Z
 Note: Refer to applicable codes and standards for proper wire type and size.

YASKAWA



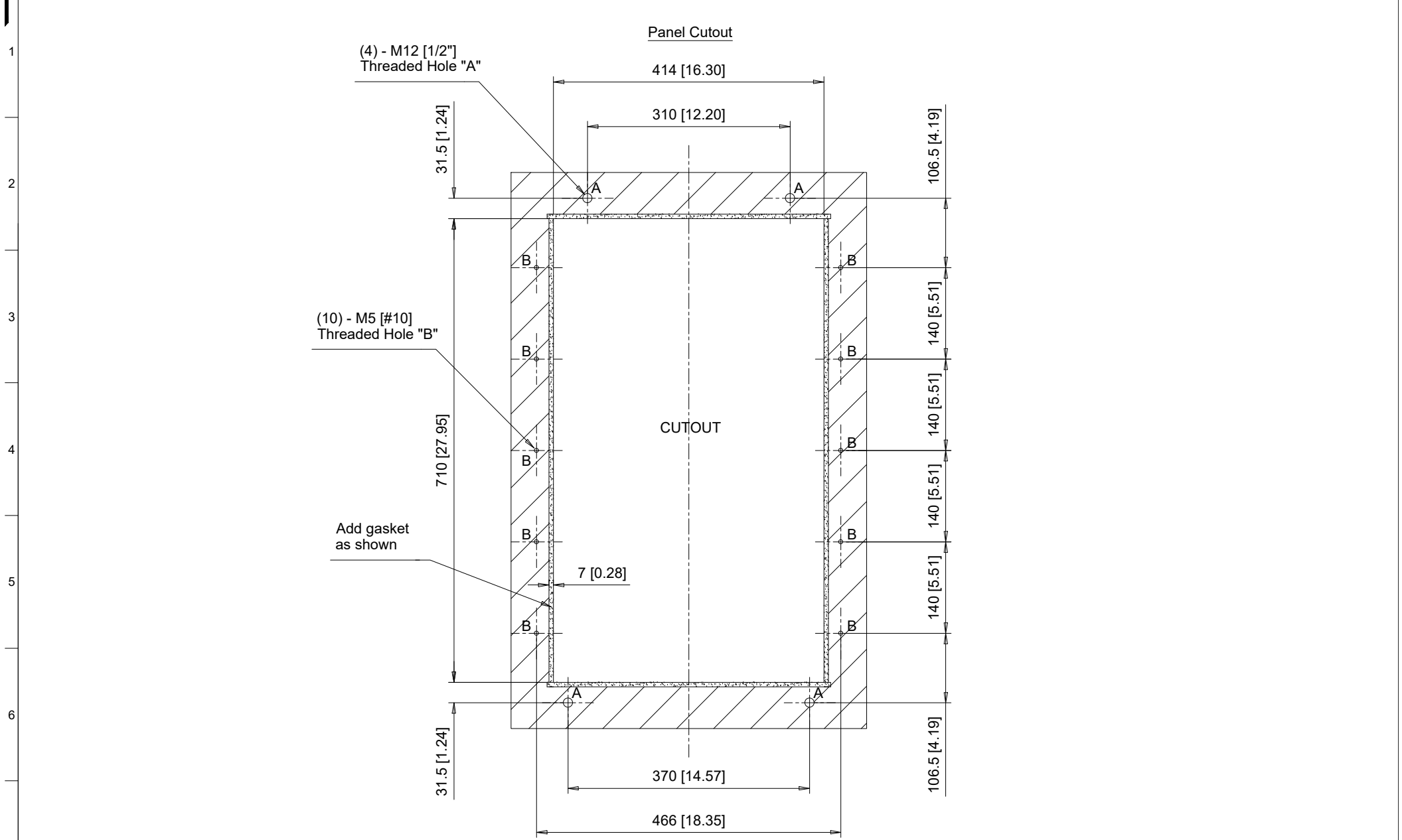
UNITS MM [IN]
 SCALE 1:10

DRWN.	J. MATTAS	6-23-22
CHKD.	J. PIOTROWSKI	6-30-22
TECH.	L. UDDIN	7-1-22
APRV.	J. CAIRO	7-19-22

TITLE
 FP605 DIMENSION DRAWING
 FRAME SIZE 10
 BACKSIDE TYPE 12 ENCLOSURE

SIZE A PAGE 2 OF 3
 DWG.NO. DD.FP605.FR10.FLNG

REV
 0



Notes:
 Exposed heatsink minimum clearance D = 223 [8.78].
 Refer to Type 12 heatsink external installation manual for additional details.

YASKAWA		DRWN. J. MATTAS 6-23-22	TITLE	SIZE A	PAGE 3 OF 3	REV 0
	UNITS MM [IN]	CHKD. J. PIOTROWSKI 6-30-22	FP605 DIMENSION DRAWING	DWG.NO.	DD.FP605.FR10.FLNG	
	SCALE 1:8	TECH. L. UDDIN 7-1-22	FRAME SIZE 10			
		APRV. J. CAIRO 7-19-22	BACKSIDE TYPE 12 ENCLOSURE			