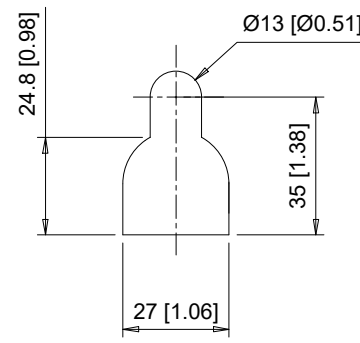
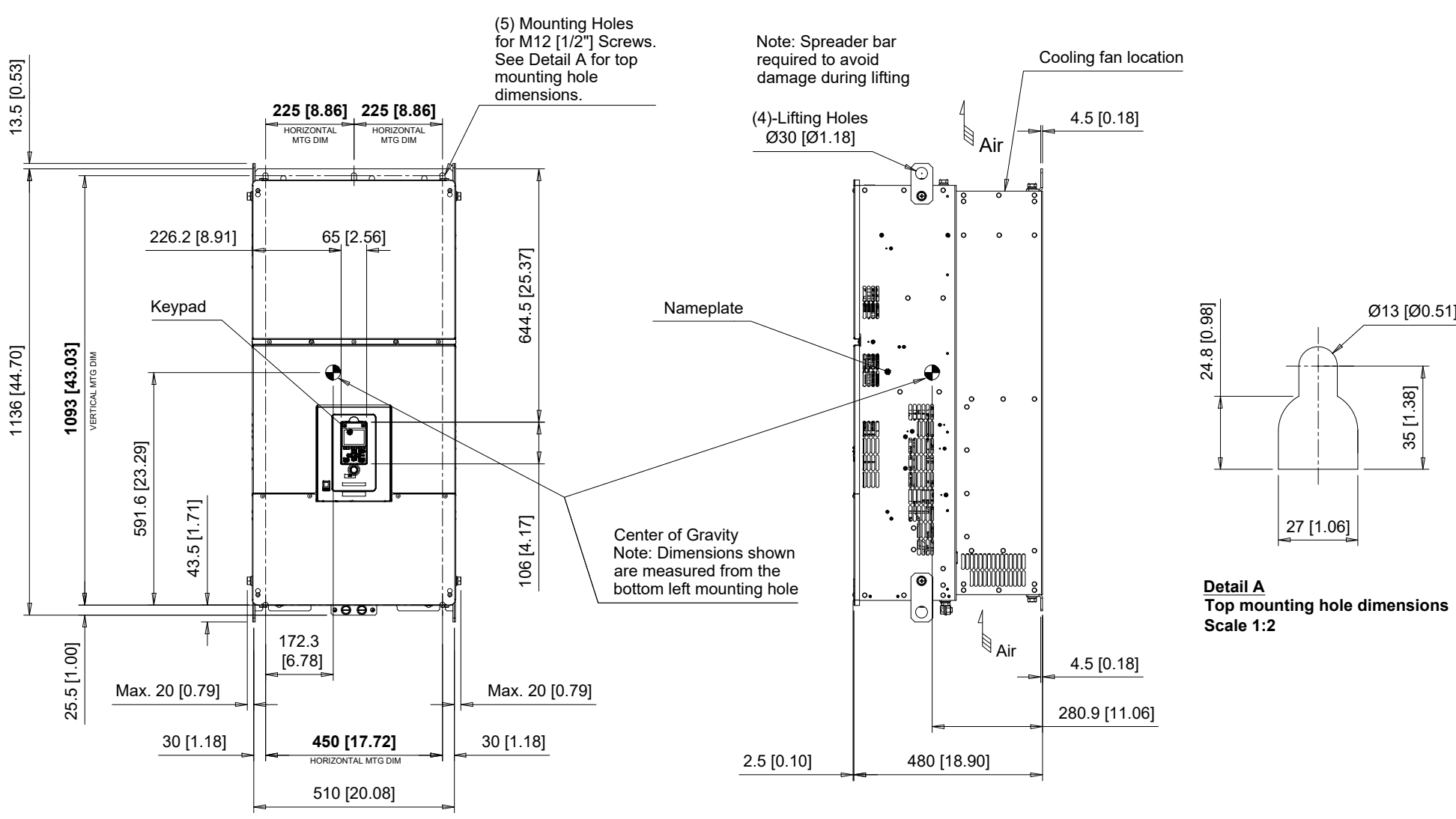
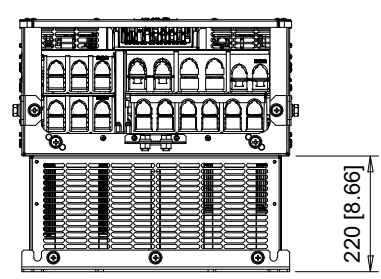


A B C D E F G H I J

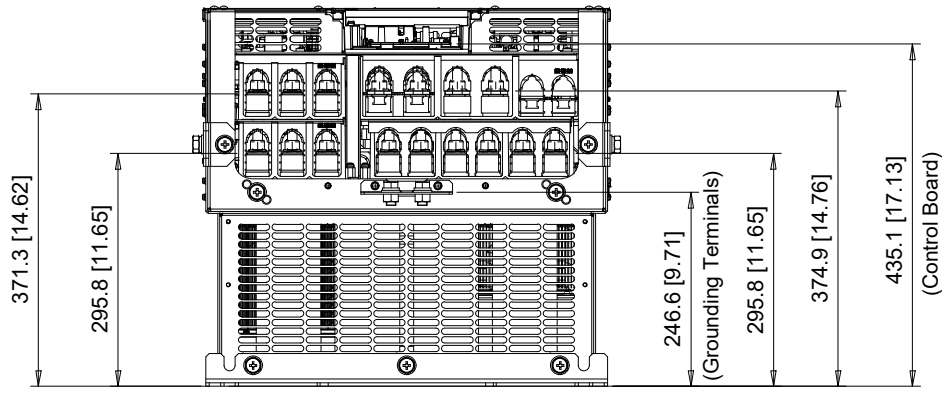
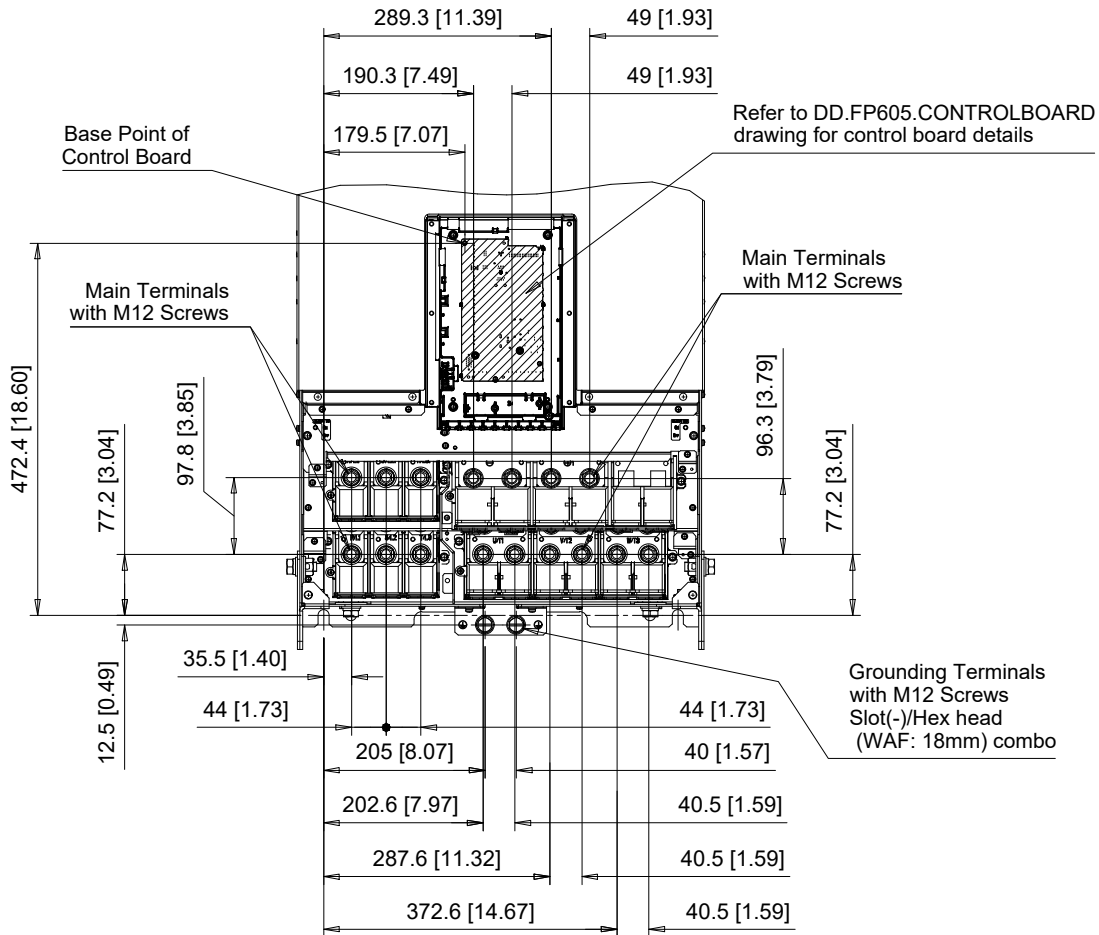


Detail A
Top mounting hole dimensions
Scale 1:2



C/C: FP65□	INPUT VOLTAGE 3-PHASE (VAC)	WEIGHT Kg (lb)	COOLING FANS
4477□□□	380 TO 480	190 (418.9)	2
4515□□□		190 (418.9)	2
4590□□□		201 (443.1)	2
4720□□□		199 (438.7)	3

□ denotes A-Z



C/C: FP65□	TERMINAL SYMBOL	WIRE RANGE AWG (mm ²)	TERMINAL SCREW	CLAMPING TORQUE N.m. (lb.in.)
4477□□□	R/L11, S/L21, T/L31,	2/0 - 300 x 2P (70 - 150 x 2P)	M12	35 (310)
4515□□□	R/L1, S/L2, T/L3			
4590□□□	U/T1, V/T2, W/T3,	2/0 - 300 x 2P (70 - 150 x 2P)	M12	35 (310)
4720□□□	U/T1, V/T2, W/T3			
	- , +1,	3/0 - 400 x 2P (95 - 205 x 2P)	M12	35 (310)
	- , +1			
	⊕	1/0 - 300 (50 - 150)	M12	32 - 40 (283 - 354)

□ Denotes A-Z
 Note: Refer to applicable codes and standards for proper wire type and size.

YASKAWA

UNITS MM [IN]
 SCALE 1:10

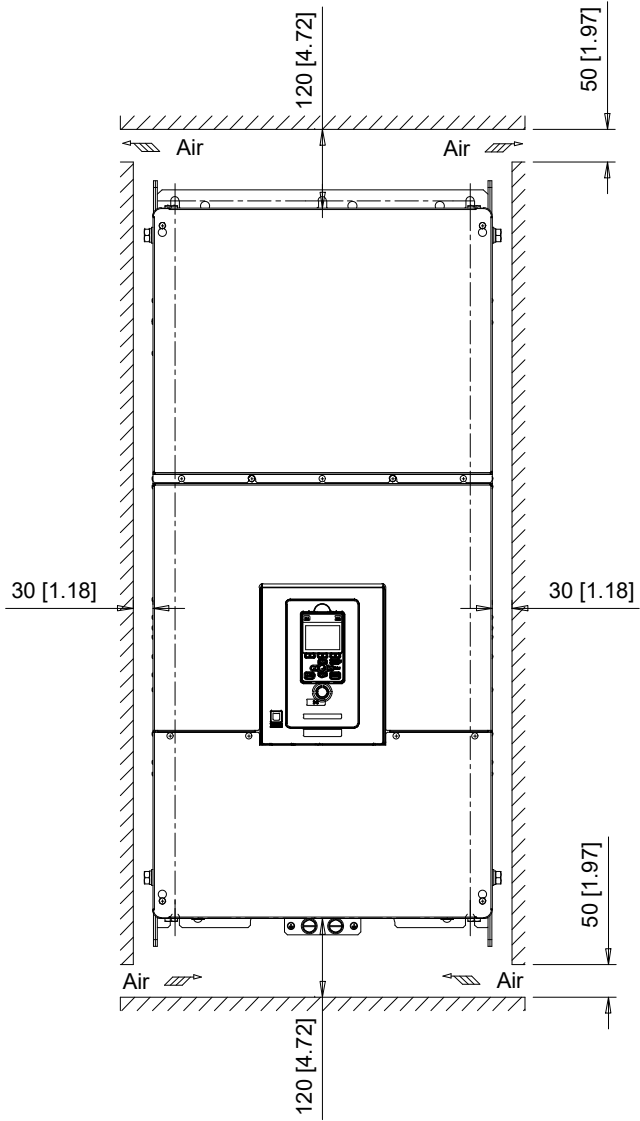
DRWN. J. MATTAS
 CHKD. J. PIOTROWSKI
 TECH. L. UDDIN
 APRV. J. CAIRO

TITLE
 FP605 DIMENSION DRAWING
 FRAME SIZE 11
 IP20 ENCLOSURE

SIZE A
 PAGE 2 OF 3
 DWG.NO.
 DD.FP605.FR11.IP20

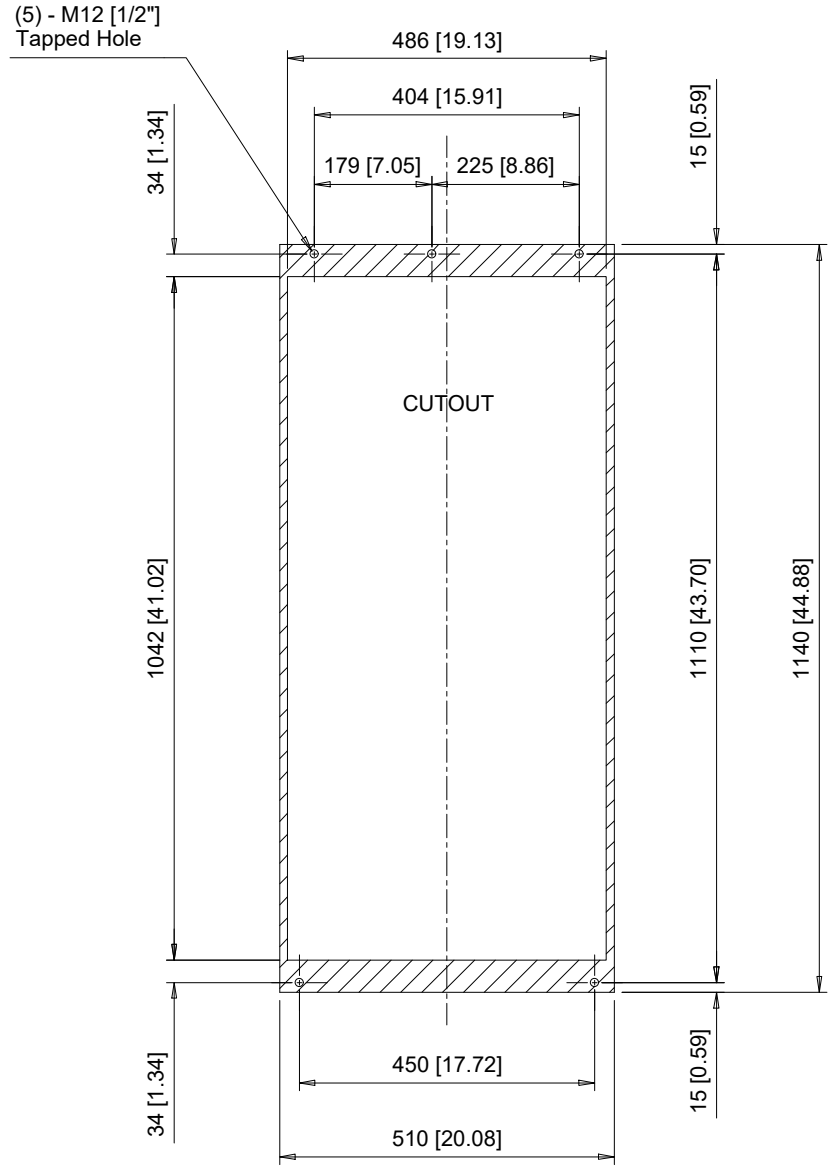
REV
 0

Minimum Installation Clearances



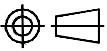
Note:
For alternate mounting configurations, consult manual.

Panel Cutout
For External Heatsink Mounting Configuration



Notes:
Exposed heatsink minimum clearance D = 225 [8.86].
Refer to external heatsink instructions document for additional details.

YASKAWA


UNITS MM [IN]
SCALE 1:12

DRWN.	J. MATTAS	4-1-22
CHKD.	J. PIOTROWSKI	4-20-22
TECH.	L. UDDIN	4-25-22
APRV.	J. CAIRO	4-21-22

TITLE
FP605 DIMENSION DRAWING
FRAME SIZE 11
IP20 ENCLOSURE

SIZE	A	PAGE	3 OF 3
DWG.NO.		DD.FP605.FR11.IP20	

REV
0