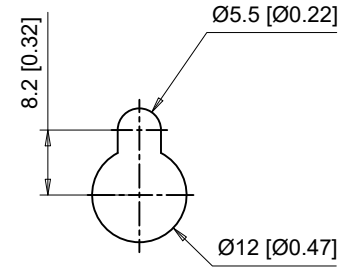
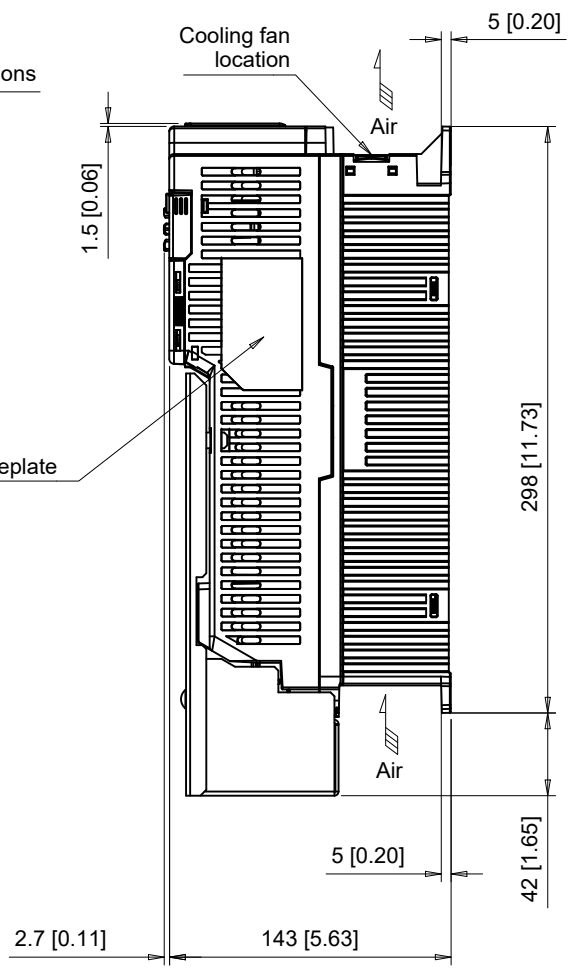


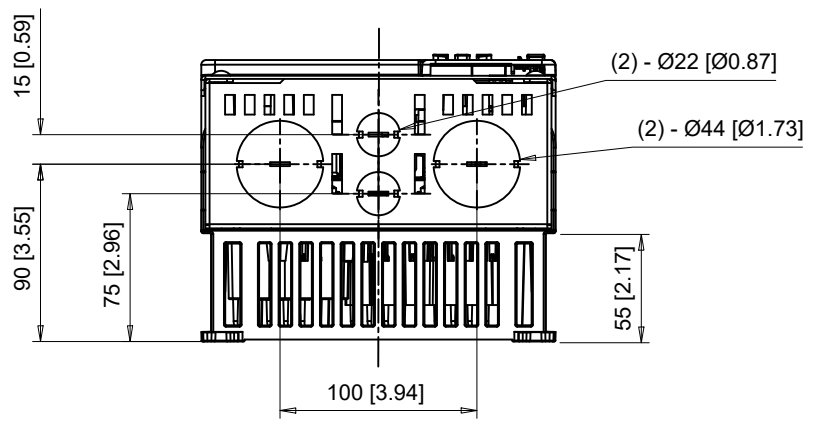
(4) Mounting Holes for M5 [#10] Screws. See Detail A for top mounting hole dimensions

Keypad

Nameplate



**Detail A**  
Top mounting hole dimensions  
Scale 1:1

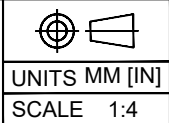


The dimensions shown are for an IP20 drive that has been converted to a UL Type 1 drive by adding the parts from UL Type 1 kit part number ZBAA-GA50V6-1

C/C: GA50□	INPUT VOLTAGE (VAC)	WEIGHT Kg (lb)	COOLING FANS
2056□□□	200 TO 240 3-PHASE	6.4 (14.1)	2
4031□□□	380 TO 480	5.5 (12.1)	2
4038□□□	3-PHASE	5.7 (12.6)	2

□ denotes A-Z

**YASKAWA**



DRWN.	J. MATTAS	10-23-19
CHKD.	J. PIOTROWSKI	11-4-19
TECH.	L. UDDIN	11-18-19
APRV.	J. CAIRO	11-19-19

TITLE  
GA500 DIMENSION DRAWING  
FRAME SIZE 6  
UL TYPE 1 ENCLOSURE

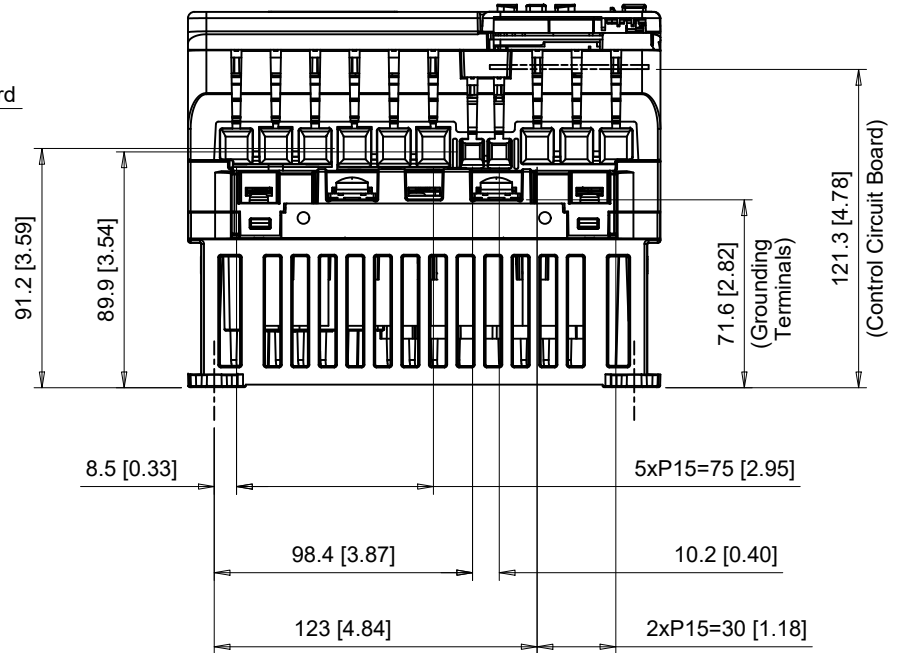
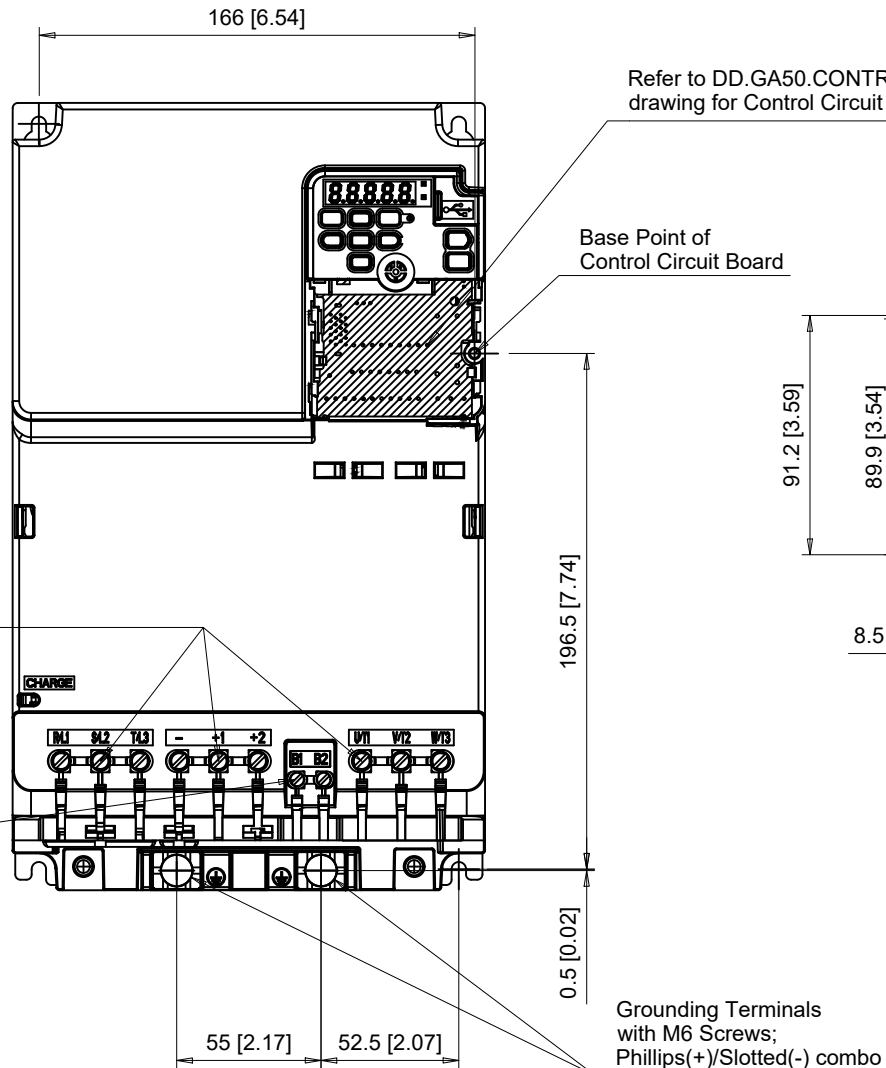
SIZE	A	PAGE	1 OF 4
DWG.NO.		DD.GA50.FR6.T1	

REV  
0

# Terminal and Wiring Information for GA50□2056

FRONT VIEW

BOTTOM VIEW



C/C: GA50□	TERMINAL SYMBOL	WIRE RANGE AWG (mm <sup>2</sup> )	TERMINAL SCREW	CLAMPING TORQUE N.m. (lb.in.)
2056□□□	R/L1, S/L2, T/L3	8 - 2 (10 - 35)	M5	4.5 (40)
	U/T1, V/T2, W/T3	8 - 2 (10 - 35)	M5	4.5 (40)
	-, +1, +2	8 - 2 (10 - 35)	M5	4.5 (40)
	B1, B2	14 - 6 (2.5 - 16)	M4	1.7 (15)
	⊕	8 - 4 (10 - 25)	M6	5.4 - 6.0 (48 - 53)

□ Denotes A-Z

Note: Refer to applicable codes and standards for proper wire type and size.

**YASKAWA**

UNITS MM [IN]  
SCALE 1:3

DRWN. J. MATTAS 10-23-19  
CHKD. J. PIOTROWSKI 11-4-19  
TECH. L. UDDIN 11-18-19  
APRV. J. CAIRO 11-19-19

TITLE  
GA500 DIMENSION DRAWING  
FRAME SIZE 6  
UL TYPE 1 ENCLOSURE

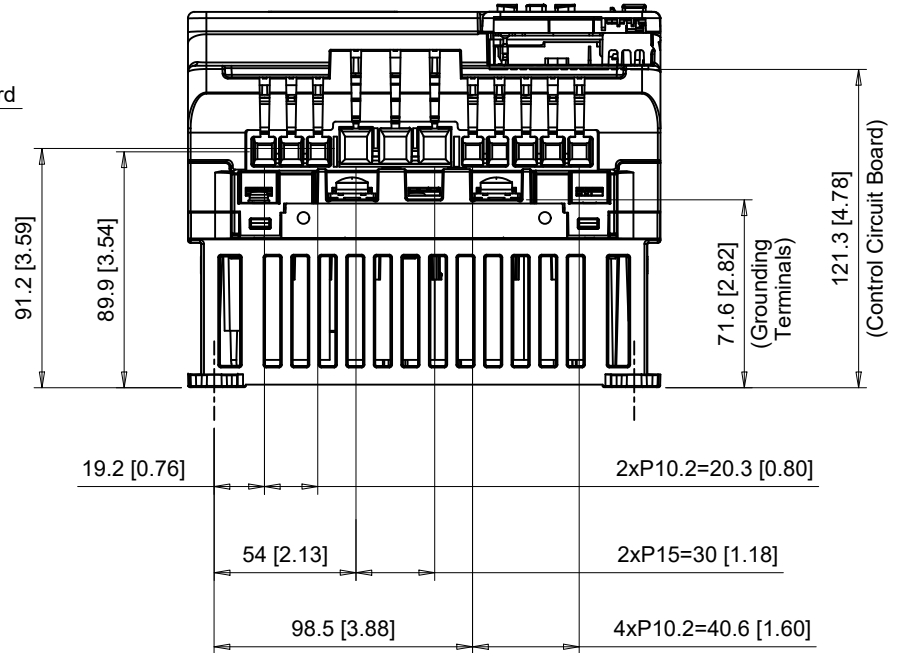
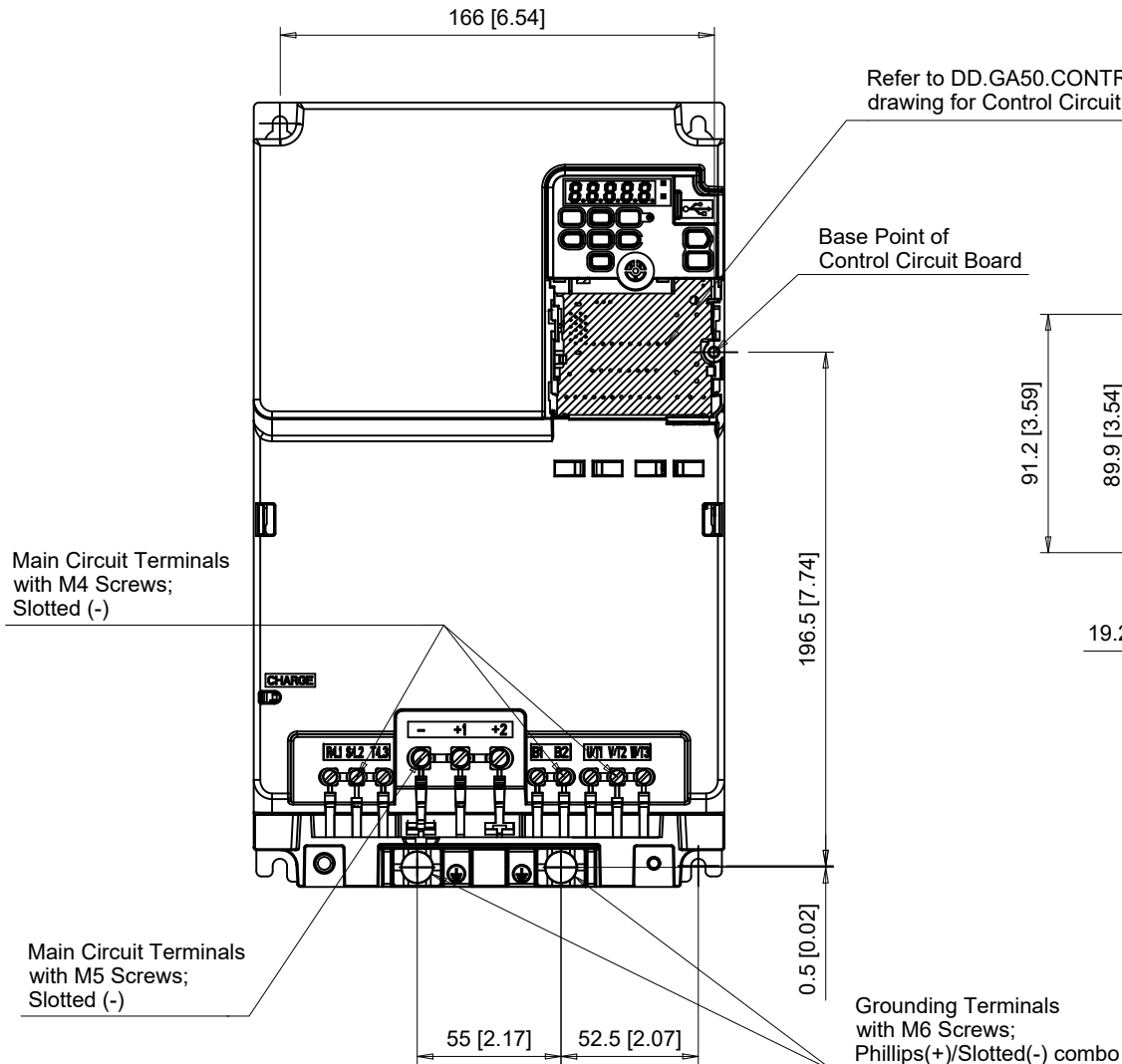
SIZE A PAGE 2 OF 4  
DWG.NO. DD.GA50.FR6.T1

REV 0

# Terminal and Wiring Information for GA50□4031 and GA50□4038

**FRONT VIEW**

**BOTTOM VIEW**



C/C: GA50□	TERMINAL SYMBOL	WIRE RANGE AWG (mm <sup>2</sup> )	TERMINAL SCREW	CLAMPING TORQUE N.m. (lb.in.)
4031□□□	R/L1, S/L2, T/L3	14 - 6 (2.5 - 16)	M4	1.7 (15)
	U/T1, V/T2, W/T3	14 - 6 (2.5 - 16)	M4	1.7 (15)
4038□□□	-, +1, +2	8 - 2 (10 - 35)	M5	4.5 (40)
	B1, B2	14 - 6 (2.5 - 16)	M4	1.7 (15)
	⊕	10 - 6 (6 - 16)	M6	5.4 - 6.0 (48 - 53)

□ Denotes A-Z

Note: Refer to applicable codes and standards for proper wire type and size.

**YASKAWA**

UNITS MM [IN]  
SCALE 1:3

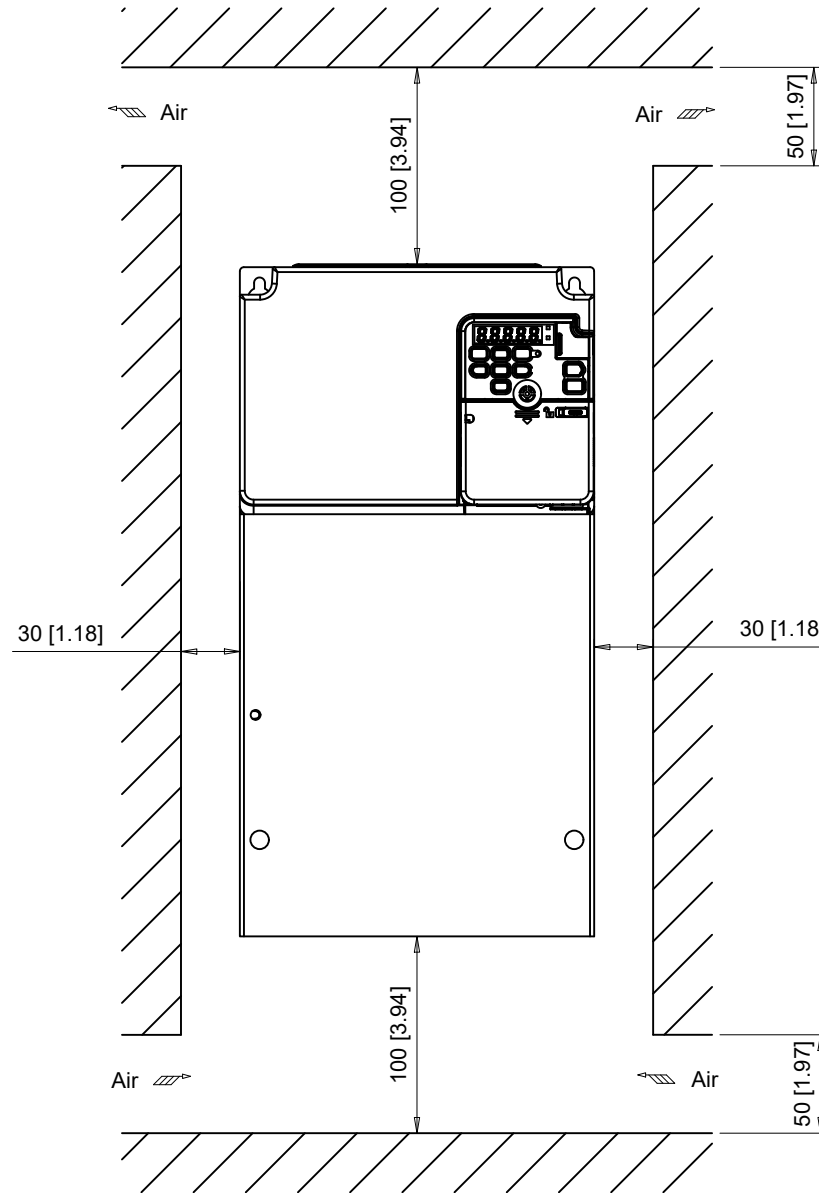
DRWN. J. MATTAS 10-23-19  
CHKD. J. PIOTROWSKI 11-4-19  
TECH. L. UDDIN 11-18-19  
APRV. J. CAIRO 11-19-19

TITLE  
GA500 DIMENSION DRAWING  
FRAME SIZE 6  
UL TYPE 1 ENCLOSURE

SIZE A PAGE 3 OF 4  
DWG.NO. DD.GA50.FR6.T1

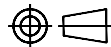
REV  
0

Minimum Installation Clearances



Note:  
For alternate mounting configurations, consult manual.

**YASKAWA**



UNITS MM [IN]

SCALE 1:4

DRWN.	J. MATTAS	10-23-19
CHKD.	J. PIOTROWSKI	11-4-19
TECH.	L. UDDIN	11-18-19
APRV.	J. CAIRO	11-19-19

TITLE  
GA500 DIMENSION DRAWING  
FRAME SIZE 6  
UL TYPE 1 ENCLOSURE

SIZE A PAGE 4 OF 4  
DWG.NO. DD.GA50.FR6.T1

REV  
0