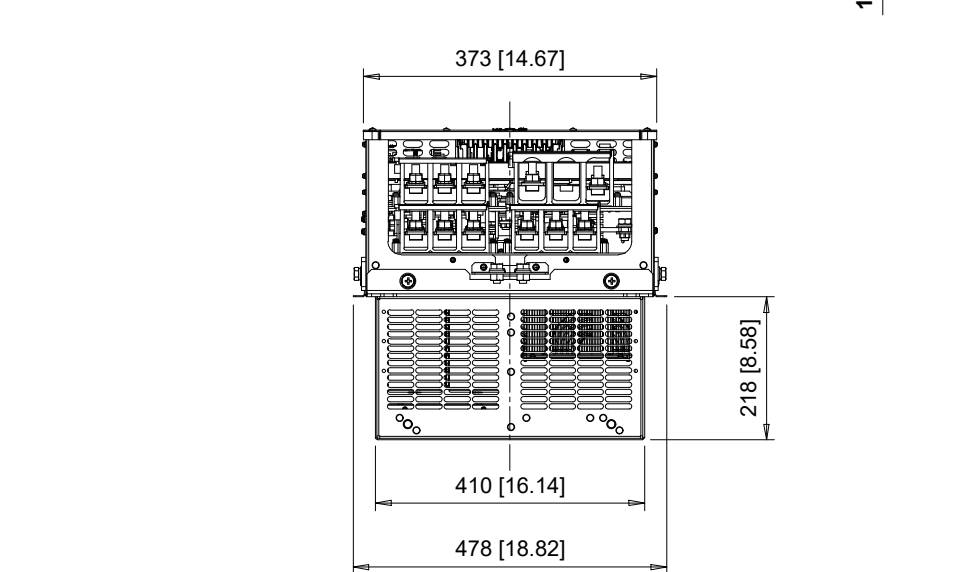
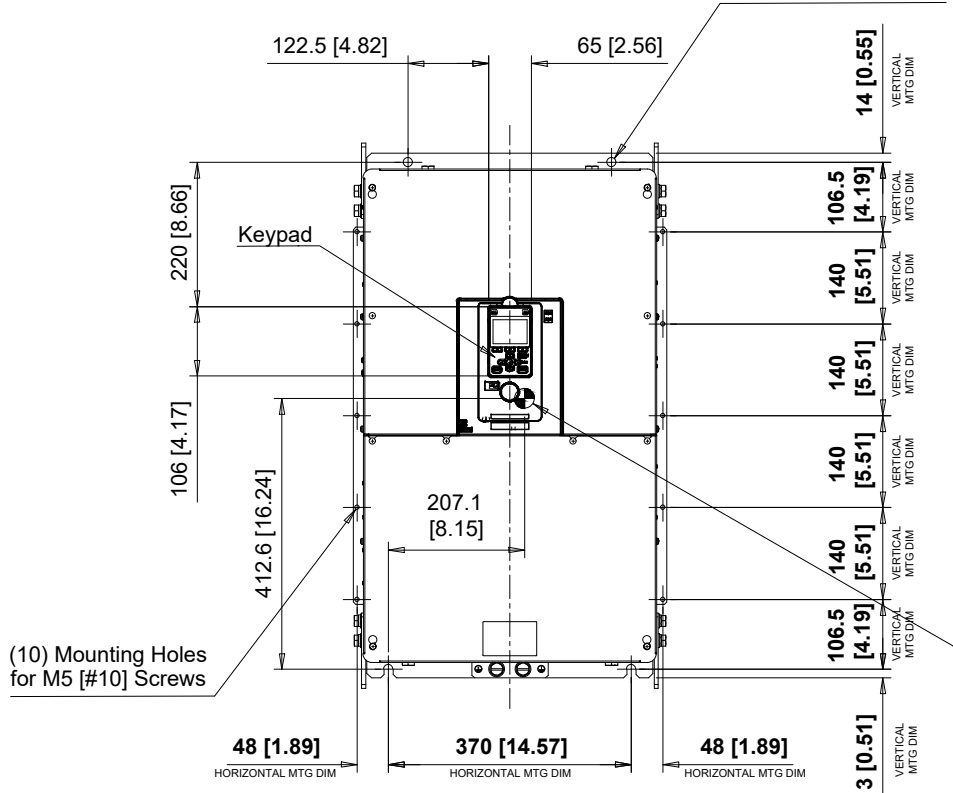


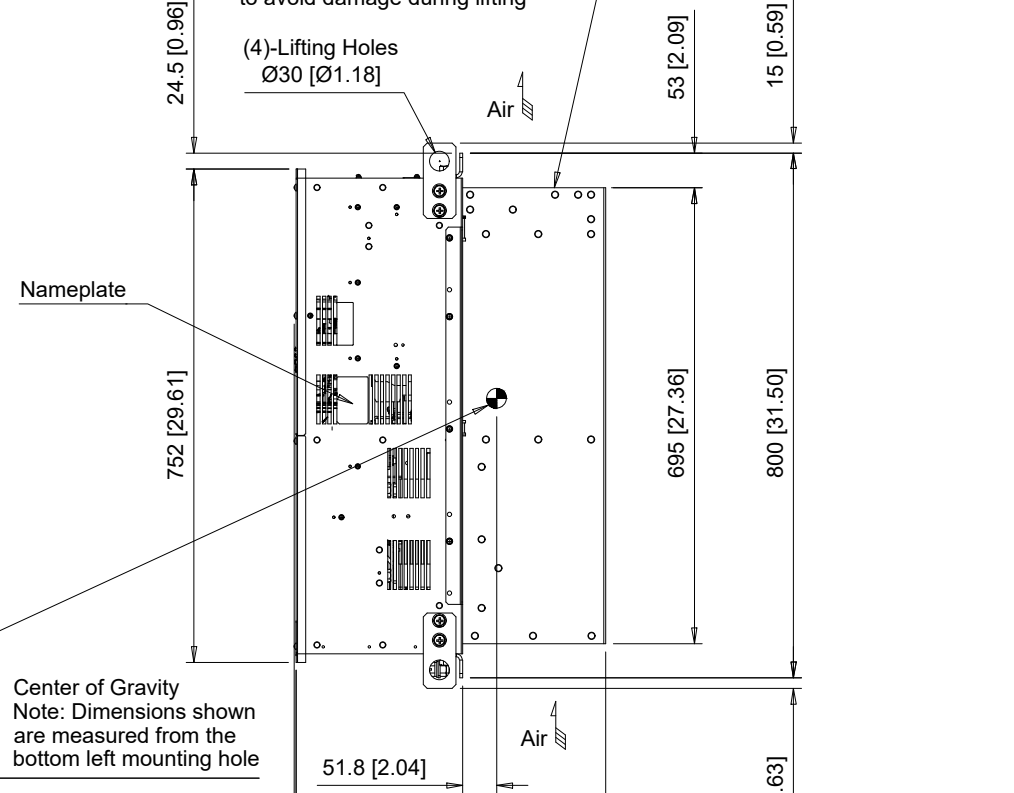
(4) Mounting Holes for M12 [1/2"] Screws



Note: Spreader bar required to avoid damage during lifting

(4)-Lifting Holes Ø30 [Ø1.18]

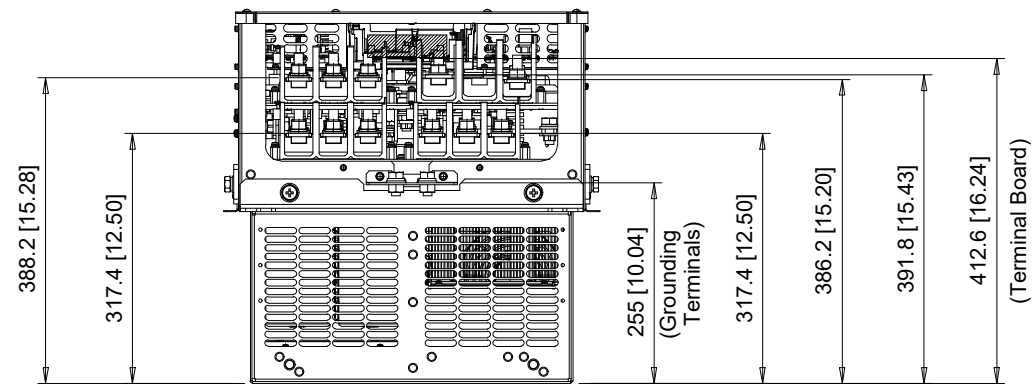
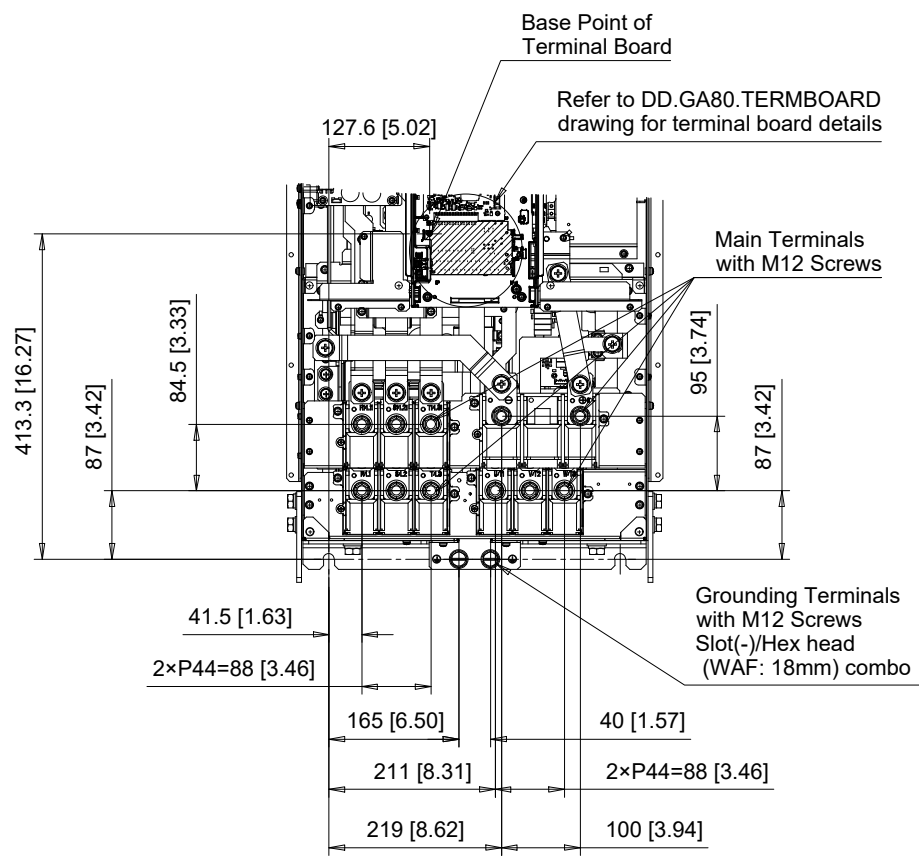
Cooling fan location



C/C:	INPUT VOLTAGE	WEIGHT	COOLING
GA80□	3-PHASE (VAC)	Kg (lb)	FANS
T371□□□	380 TO 480	98 (216)	2
T414□□□		101 (222)	3

□ denotes A-Z

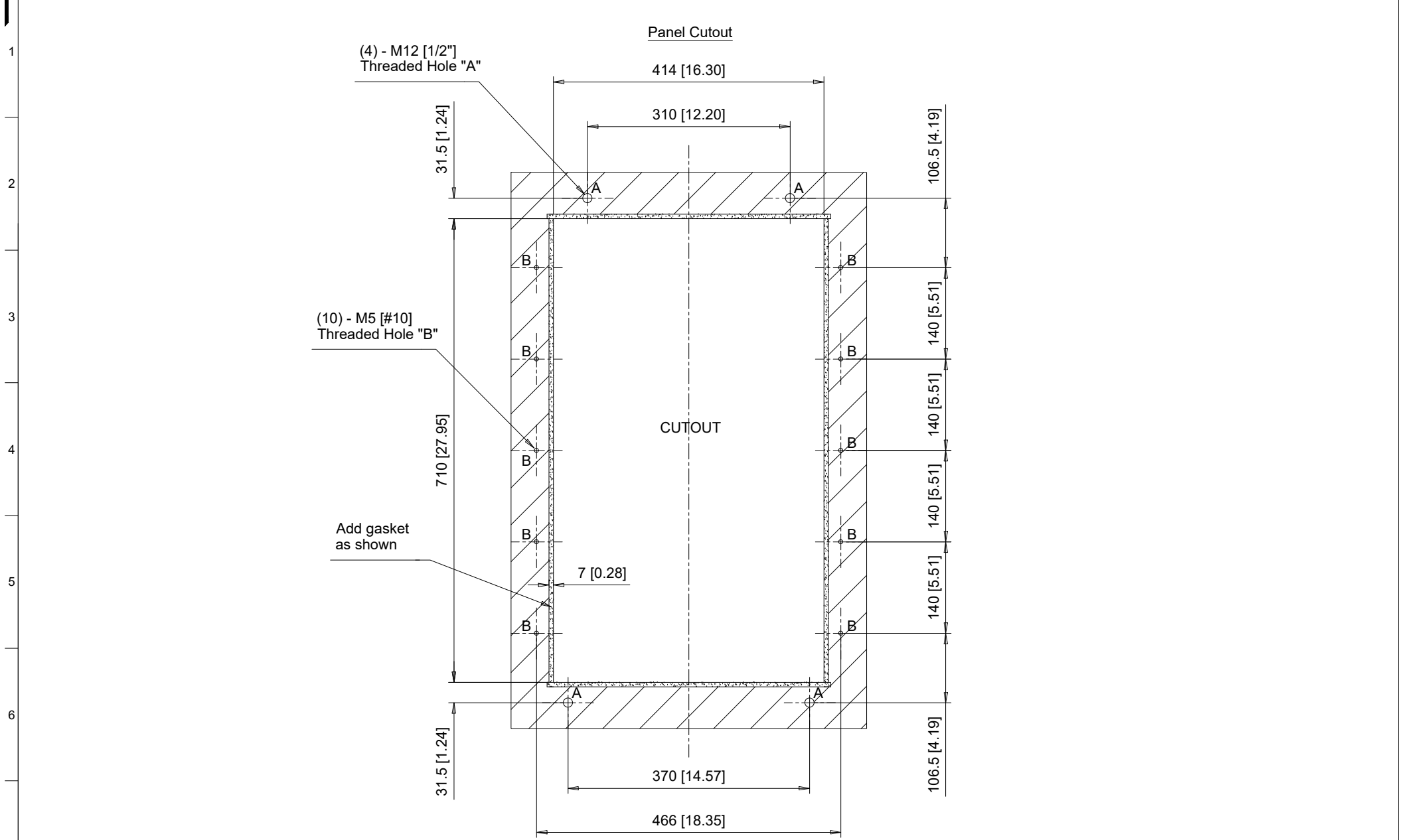
A B C D E F G H I J

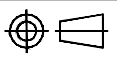


C/C: GA80□	TERMINAL SYMBOL	WIRE RANGE AWG (mm ²)	TERMINAL SCREW	CLAMPING TORQUE N.m. (lb.in.)
T371□□	R/L1, S/L2, T/L3	2/0 - 300 x 2P (70 - 150 x 2P)	M12	35 (310)
T414□□	R1/L11, S1/L21, T1/L31	2/0 - 300 x 2P (70 - 150 x 2P)	M12	35 (310)
	U, V, W	2/0 - 300 x 2P (70 - 150 x 2P)	M12	35 (310)
	-, +3	4/0 - 400 x 2P (120 - 205 x 2P)	M12	35 (310)
	⊕	1 - 350 (50 - 185)	M12	32 - 40 (283 - 354)

□ Denotes A-Z
Note: Refer to applicable codes and standards for proper wire type and size.

YASKAWA		DRWN. J. MATTAS	1-11-21	TITLE GA800 12 PULSE DIMENSION DRAWING FRAME SIZE 10 BACKSIDE TYPE 12 ENCLOSURE	SIZE A	PAGE 2 OF 3	REV 0
	UNITS MM [IN]	CHKD. J. PIOTROWSKI	3-8-21		DWG.NO.		
	SCALE 1:10	TECH. L. UDDIN	3-1-21		DD.GA80.FR10.FLNG.12P		
	APRV. J. CAIRO	4-1-21					



8	YASKAWA	 UNITS MM [IN] SCALE 1:8	DRWN. J. MATTAS 1-11-21	TITLE	SIZE A	PAGE 3 OF 3	REV
			CHKD. J. PIOTROWSKI 3-8-21	GA800 12 PULSE DIMENSION DRAWING	DWG.NO.	0	
			TECH. L. UDDIN 3-1-21	FRAME SIZE 10	DD.GA80.FR10.FLNG.12P		
			APRV. J. CAIRO 4-1-21	BACKSIDE TYPE 12 ENCLOSURE			