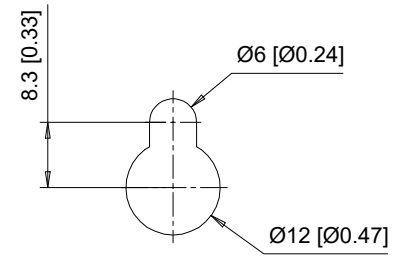
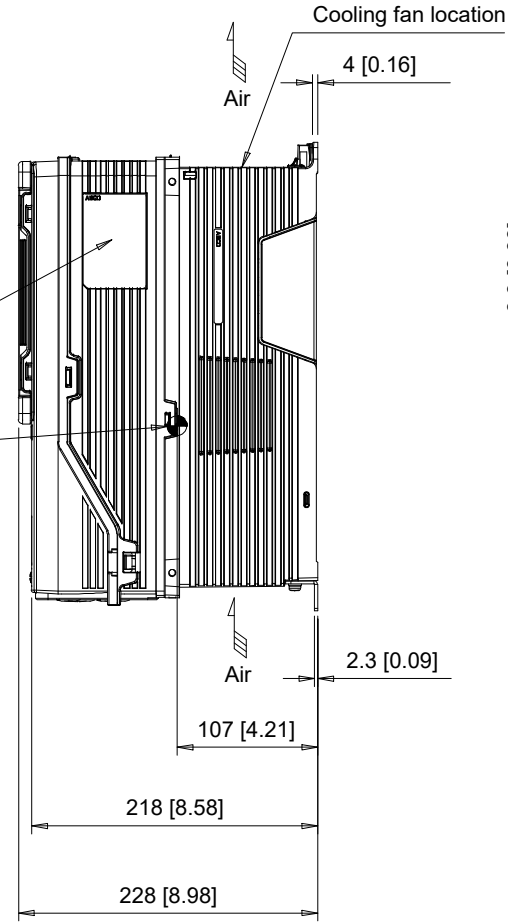
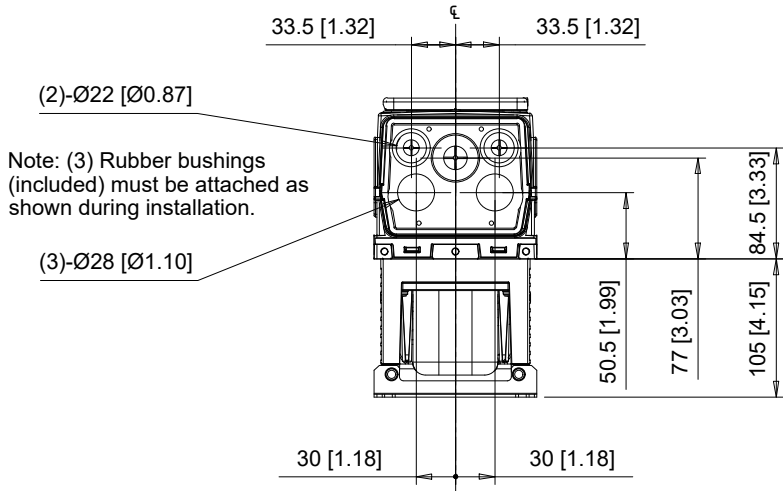


(4) Mounting Holes for M5 [#10] Screws. See Detail A for top mounting hole dimensions.

Center of Gravity  
Note: Dimensions shown are measured from the bottom left mounting hole



**Detail A**  
Top mounting hole dimensions  
Scale 1:1

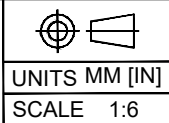


Note: (3) Rubber bushings (included) must be attached as shown during installation.

C/C: HV60□	INPUT VOLTAGE 3-PHASE (VAC)	WEIGHT Kg (lb)	COOLING FANS
2011□□□	200 TO 240	6.5 (14.3)	1
2017□□□		6.5 (14.3)	1
4005□□□	380 TO 480	7.0 (15.4)	0
4008□□□		7.5 (16.5)	1
4011□□□		7.0 (15.4)	1
4014□□□		7.0 (15.4)	1

□ denotes A-Z

**YASKAWA**



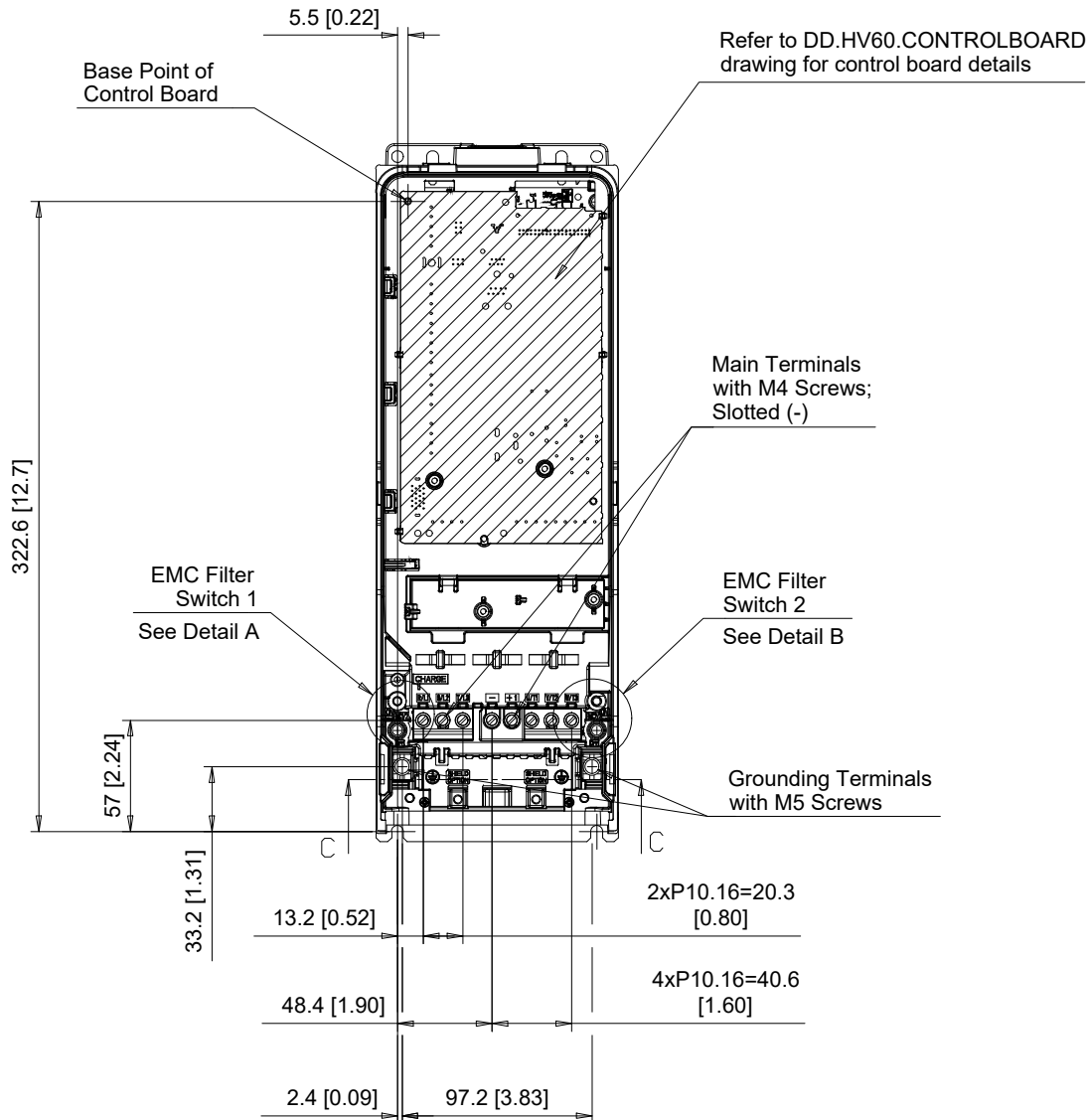
DRWN.	J. MATTAS	10-1-19
CHKD.	J. PIOTROWSKI	10-18-19
TECH.	L. UDDIN	10-21-19
APRV.	J. CAIRO	10-22-19

TITLE  
HV600 DIMENSION DRAWING  
FRAME SIZE 1  
IP55/UL TYPE 12 ENCLOSURE

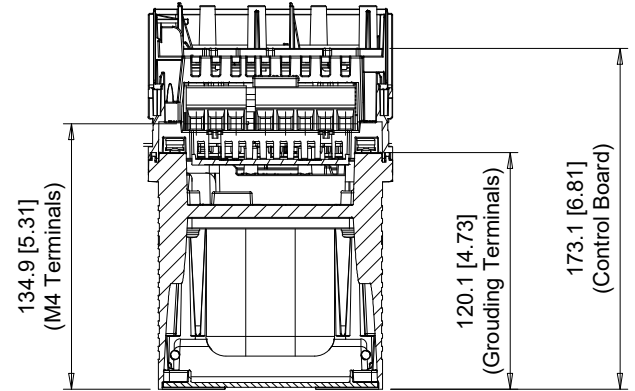
SIZE A PAGE 1 OF 3  
DWG.NO. DD.HV60.FR1.T12

REV 1

1	ADD FAN TO MODEL 4008
0	INITIAL RELEASE



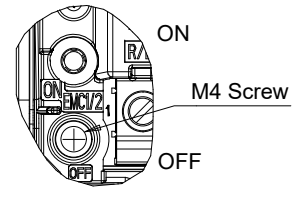
Refer to DD.HV60.CONTROLBOARD drawing for control board details



Section C-C

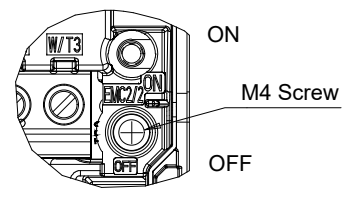
EMC FILTER SWITCHES

EMC SW1



Detail A  
Scale 1:2

EMC SW2



Detail B  
Scale 1:2

C/C: HV60□	TERMINAL SYMBOL	WIRE RANGE AWG (mm <sup>2</sup> )	TERMINAL SCREW	CLAMPING TORQUE N.m. (lb.in.)
2011□□□	R/L1, S/L2, T/L3	14 - 6 (2.5 - 16)	M4	1.7 (15)
2017□□□	U/T1, V/T2, W/T3	14 - 6 (2.5 - 16)	M4	1.7 (15)
4005□□□	-, +1	14 - 6 (2.5 - 16)	M4	1.7 (15)
4008□□□	⊕	14 - 8 (2.5 - 10)	M5	2.0 - 2.5 (18 - 22)
4011□□□				
4014□□□				

□ Denotes A-Z

Note: Refer to applicable codes and standards for proper wire type and size.

1	ADD FAN TO MODEL 4008
0	INITIAL RELEASE



UNITS	MM [IN]
SCALE	1:4

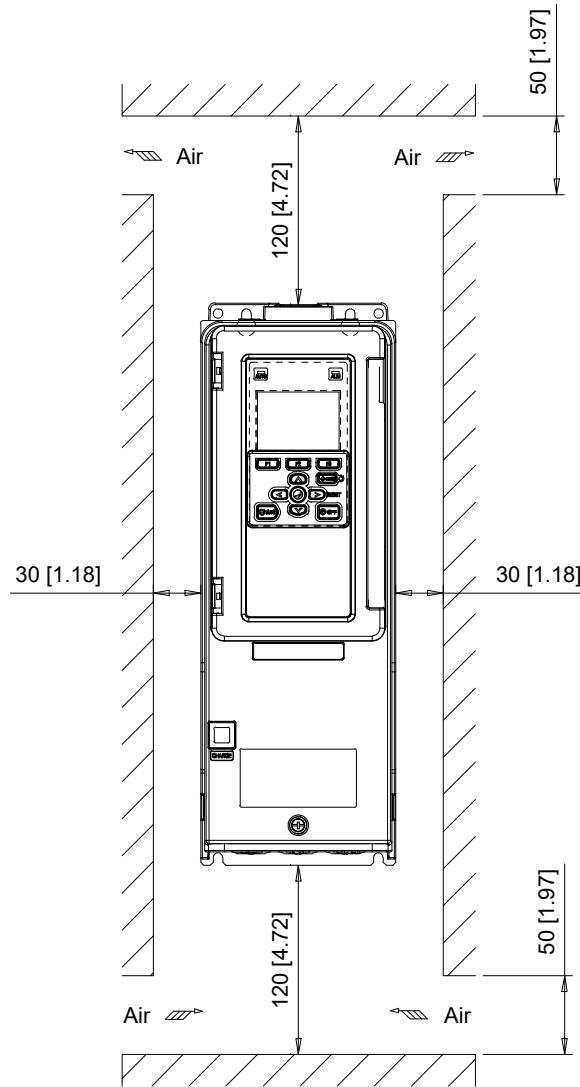
DRWN.	J. MATTAS	10-1-19
CHKD.	J. PIOTROWSKI	10-18-19
TECH.	L. UDDIN	10-21-19
APRV.	J. CAIRO	10-22-19

TITLE	HV600 DIMENSION DRAWING FRAME SIZE 1 IP55/UL TYPE 12 ENCLOSURE
-------	--

SIZE	A	PAGE	2 OF 3
DWG.NO.	DD.HV60.FR1.T12		

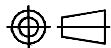
REV	1
-----	---

Minimum Installation Clearances



Note:  
For alternate mounting configurations, consult manual.

**YASKAWA**



UNITS MM [IN]  
SCALE 1:5

DRWN.	J. MATTAS	10-1-19
CHKD.	J. PIOTROWSKI	10-18-19
TECH.	L. UDDIN	10-21-19
APRV.	J. CAIRO	10-22-19

TITLE  
HV600 DIMENSION DRAWING  
FRAME SIZE 1  
IP55/UL TYPE 12 ENCLOSURE

SIZE A PAGE 3 OF 3  
DWG.NO.  
DD.HV60.FR1.T12

REV  
1

1	ADD FAN TO MODEL 4008
0	INITIAL RELEASE