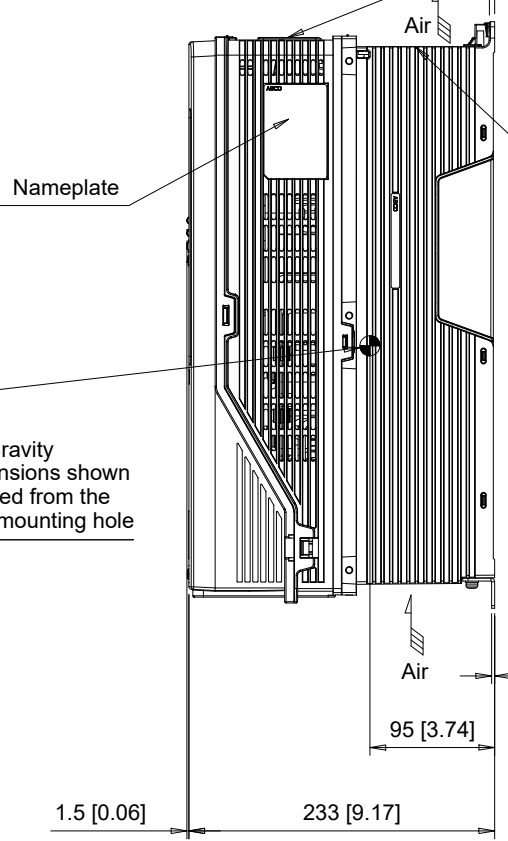
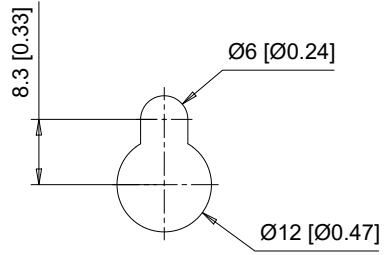


(4) Mounting Holes for M5 [#10] Screws. See Detail A for top mounting hole dimensions.

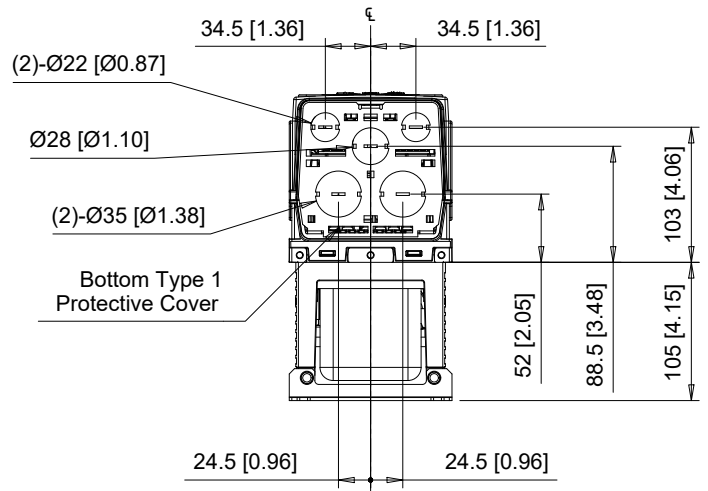
Top Type 1 Protective Cover
 Note: Protective covers are factory installed to the top and bottom of the drive to meet UL Type 1 requirements. Remove these covers when operating the drive within a panel. Removing these covers results in an enclosure rating of IP20.



Center of Gravity
 Note: Dimensions shown are measured from the bottom left mounting hole

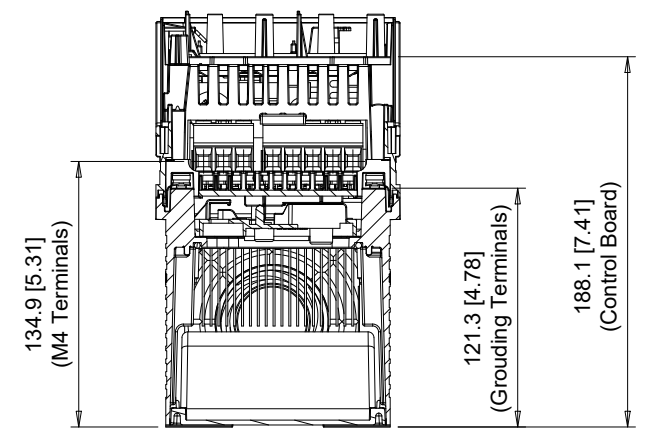
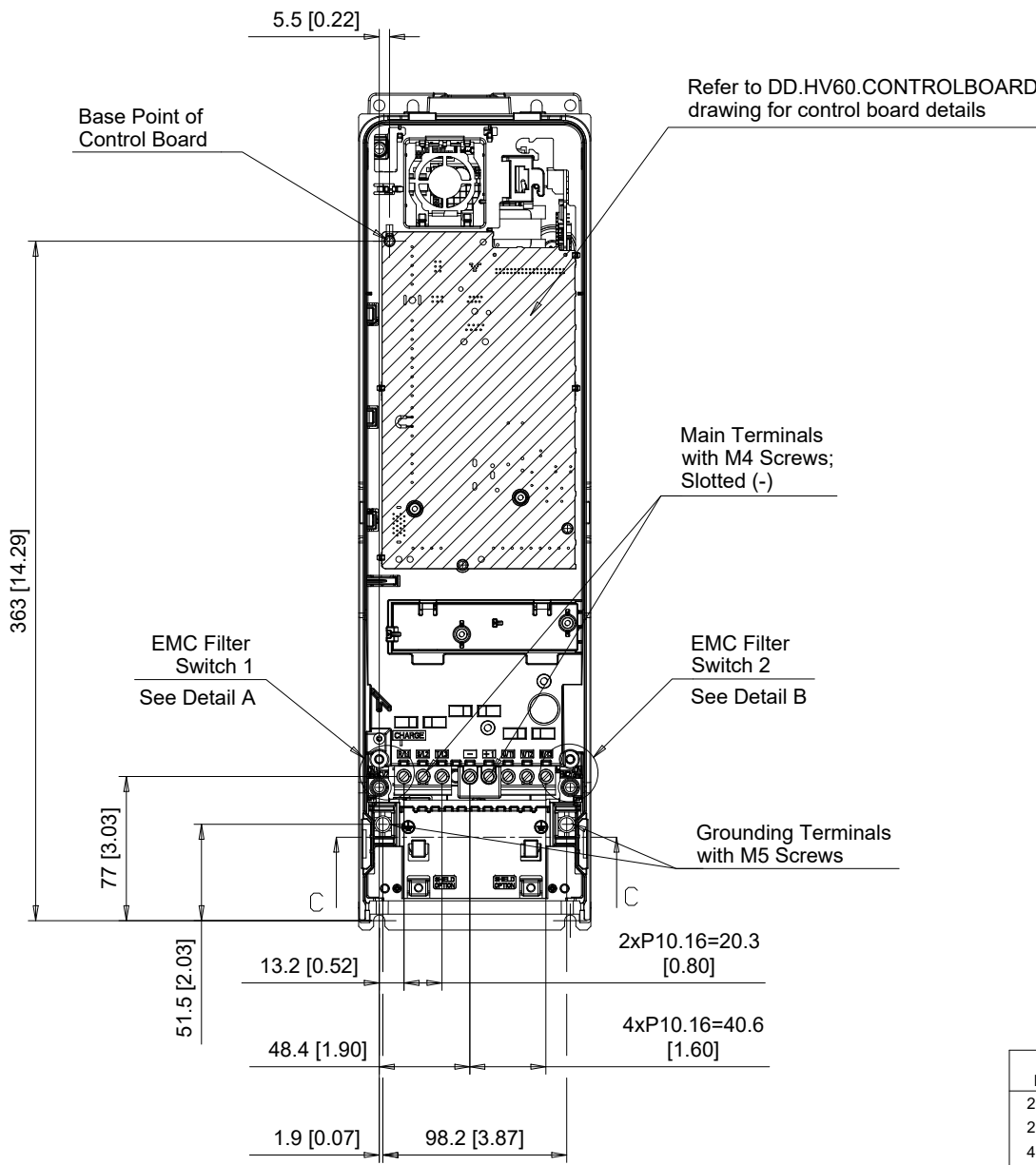


Detail A
 Top mounting hole dimensions
 Scale 1:1



C/C: HV60□	INPUT VOLTAGE 3-PHASE (VAC)	WEIGHT Kg (lb)	COOLING FANS
2024□□□	200 TO 240	8.5 (18.7)	1
2031□□□		9.0 (19.8)	1
4021□□□	380 TO 480	9.0 (19.8)	1
4027□□□		10.0 (22.0)	1
4034□□□		11.0 (24.3)	1

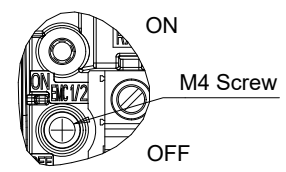
□ denotes A-Z



Section C-C

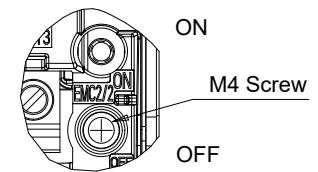
EMC FILTER SWITCHES

EMC SW1



Detail A
Scale 1:2

EMC SW2



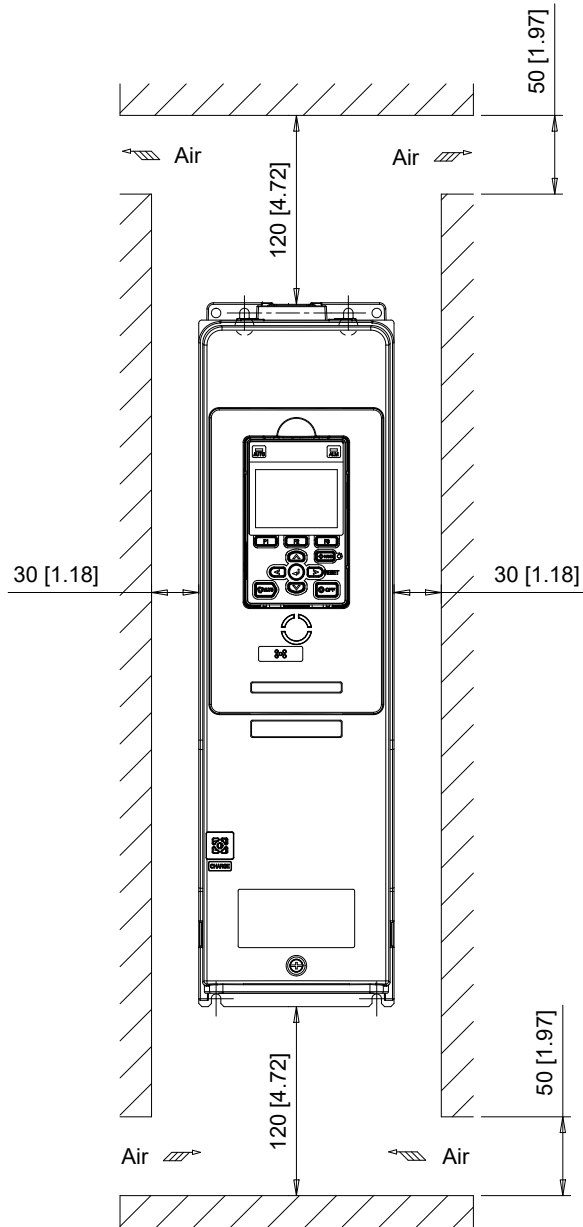
Detail B
Scale 1:2

C/C: HV60□	TERMINAL SYMBOL	WIRE RANGE AWG (mm ²)	TERMINAL SCREW	CLAMPING TORQUE N.m. (lb.in.)
2024□□□	R/L1, S/L2, T/L3	14 - 6 (2.5 - 16)	M4	1.7 (15)
2031□□□	U/T1, V/T2, W/T3	14 - 6 (2.5 - 16)	M4	1.7 (15)
4021□□□	-, +1	14 - 6 (2.5 - 16)	M4	1.7 (15)
4027□□□	⊕	14 - 8 (2.5 - 10)	M5	2.0 - 2.5 (18 - 22)
4034□□□				

□ Denotes A-Z

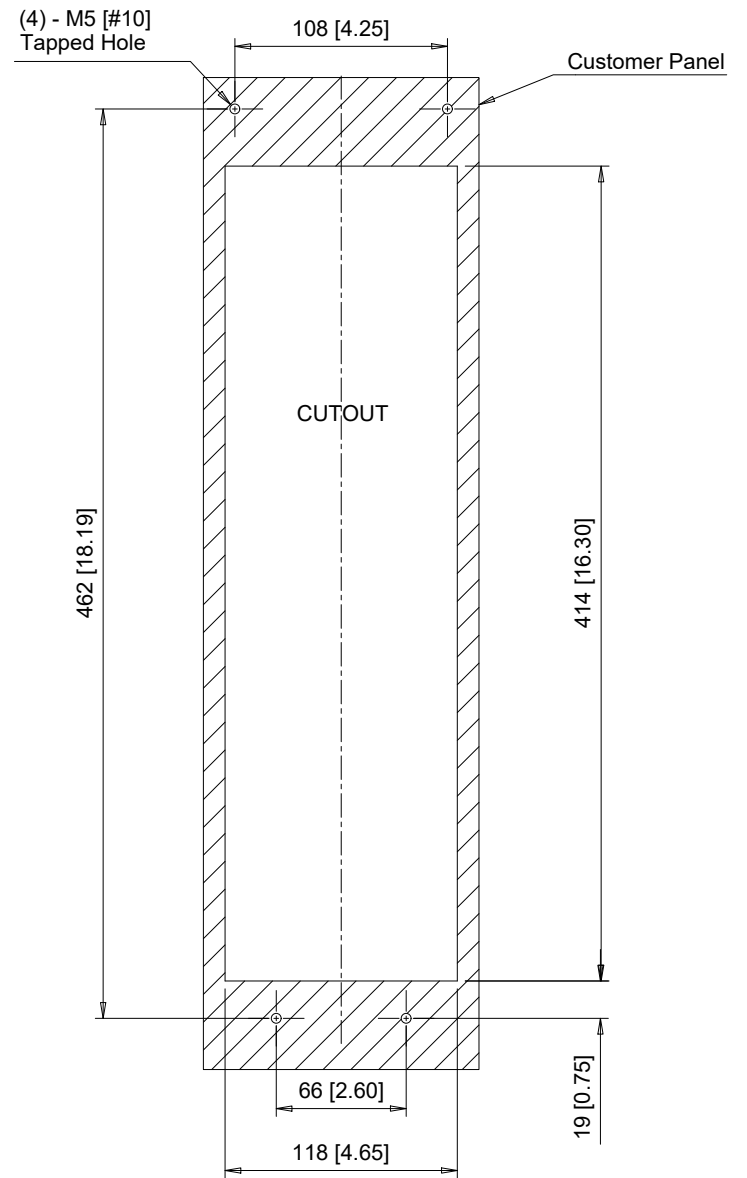
Note: Refer to applicable codes and standards for proper wire type and size.

Minimum Installation Clearances (Scale 1:5)



Note:
For alternate mounting configurations, consult manual.

Panel Cutout (Scale 1:4)
For External Heatsink Mounting Configuration



Notes:
Exposed heatsink minimum clearance D = 110 [4.33].
Refer to external heatsink instructions document for additional details.

YASKAWA



UNITS MM [IN]
SCALE ABOVE

DRWN.	J. MATTAS	9-30-19
CHKD.	J. PIOTROWSKI	10-11-19
TECH.	L. UDDIN	10-15-19
APRV.	J. CAIRO	10-22-19

TITLE
HV600 DIMENSION DRAWING
FRAME SIZE 2
IP20/UL TYPE 1 ENCLOSURE

SIZE A PAGE 3 OF 3
DWG.NO.
DD.HV60.FR2.T1

REV
0