

MODEL #	VOLTAGE THREE PHASE (VAC)	OUTPUT CURRENT (A)	WEIGHT LBS (Kg)	HEAT LOSS (W) (Fc=2kHz)		
				INT	EXT	TOT
2V0006GXX	208/240	6.0	10.6 (4.8)	17.2	27.5	44.7
4V0002GXX	380/480	2.1	11.0 (5.0)	13.9	18.5	32.4
4V0004GXX		4.1	11.0 (5.0)	16.8	30.5	47.3

NOTE:
XX DENOTES AA-ZZ

INT=INTERNAL COMPONENTS
EXT=EXTERNAL HEATSINK
TOT=TOTAL

FOR ADDITIONAL DETAILS AND SPECIFICATIONS, CONSULT MANUAL

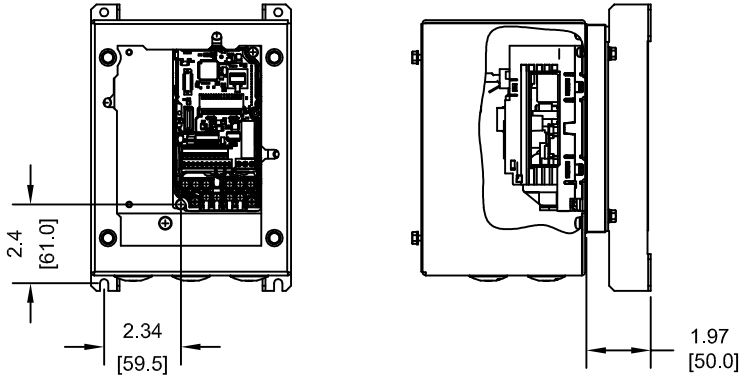
TOLERANCES / REFERENCES:		<p>THIS DOCUMENT AND INFORMATION CONTAINED IN IT ARE CONFIDENTIAL, AND CANNOT BE COPIED OR DISCLOSED IN WHOLE OR IN PART WITHOUT THE EXPRESS WRITTEN CONSENT OF YASKAWA AMERICA, INC.</p>	DRAWN: J. MATTAS DATE: 11-4-14	TITLE: IQ PUMP MICRO DIMENSION DRAWING FRAME SIZE 1 NEMA TYPE 4X ENCLOSURE (IP66) 2V0006, 4V0002 AND 4V0004
UNITS: IN[mm]	SCALE: 1:4		CHECKED: J. PIOTROWSKI DATE: 11-10-14	DATE: 11-10-14
			TECH: J. BORJA DATE: 11-11-14	DATE: 11-11-14
			APPROVED: J. CAIRO DATE: 11-18-14	DATE: 11-18-14
		ORIGINAL DESIGN:	DATE:	SIZE: A REVISION: R00 PAGE: 1 of 6 DRAWING #: DD.IQPM.FR1.N4

TERMINAL AND WIRING INFORMATION FOR: PW2V0006G

NOTE: REFER TO PAGE 6 FOR 24 VOLT OPTION KIT DETAILS

TERMINAL AND WIRING, GENERAL VIEWS (SCALE 1:6)

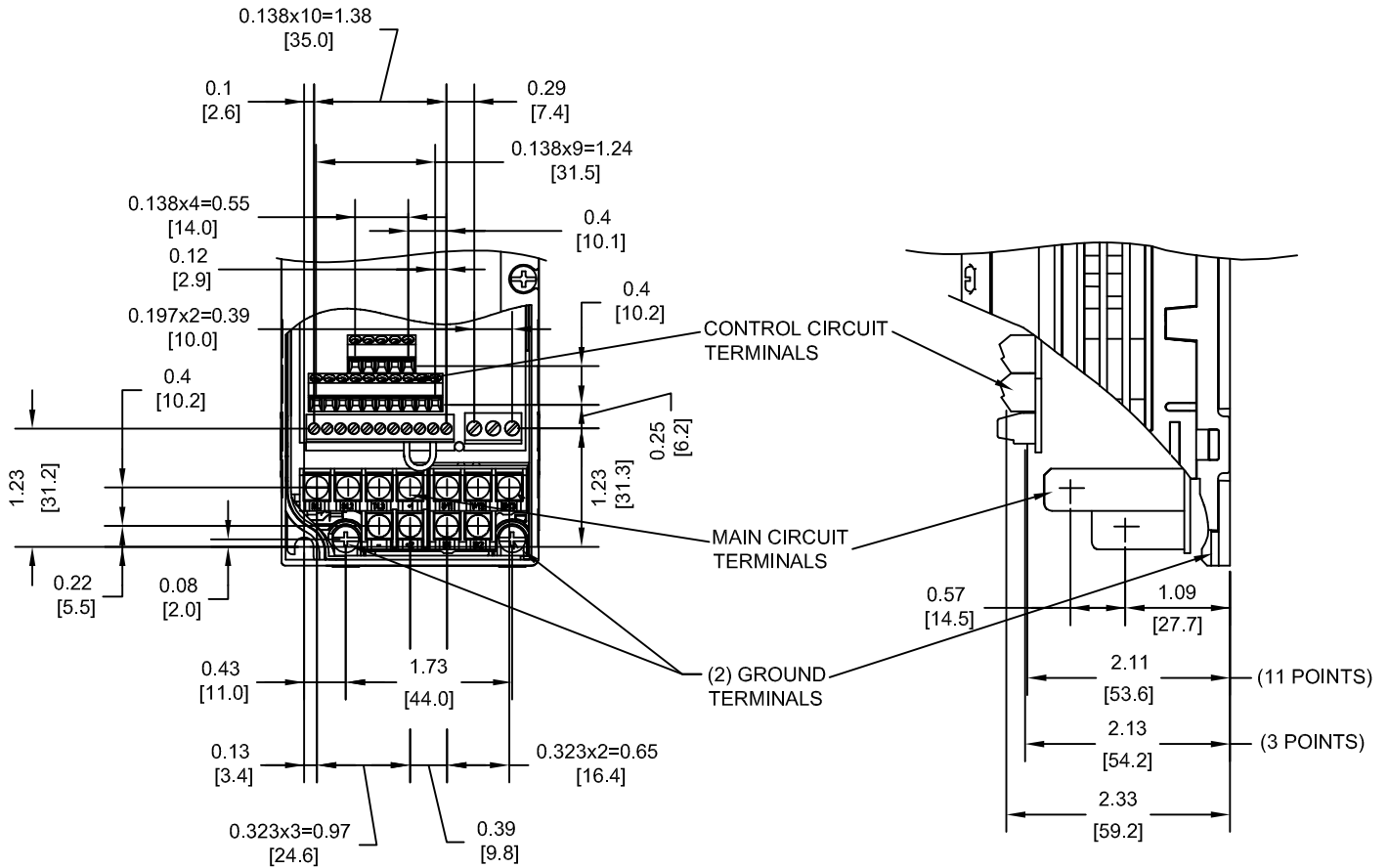
TERMINAL AND WIRE SPECIFICATIONS FOR MAIN CIRCUIT AND GROUND



MODEL #	TERMINAL SCREW	CLAMPING TORQUE lb.in.(N.m.)	WIRE RANGE AWG(mm ²)
2V0006G	M3.5	7.1 TO 8.9 (0.8 TO 1.0)	22-14 (0.33-2.0)

NOTE: RATINGS APPLY TO BOTH FACTORY AND FIELD WIRING
REFER TO APPLICABLE CODES FOR PROPER WIRE TYPE AND SIZE

TERMINAL AND WIRING, DETAILED VIEWS (SCALE 1:2)



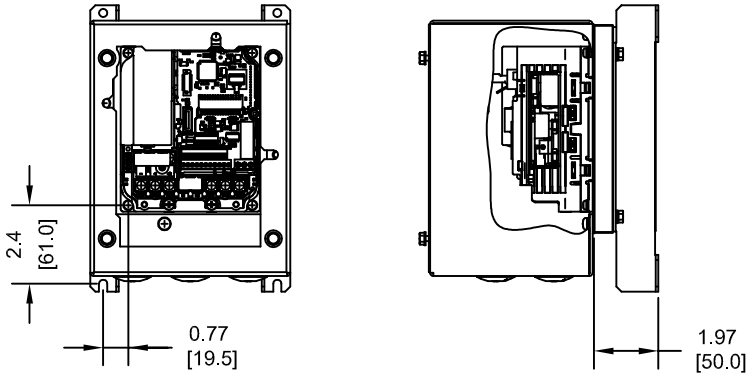
FOR ADDITIONAL DETAILS AND SPECIFICATIONS, CONSULT MANUAL

TOLERANCES / REFERENCES:			DRAWN:	DATE:	TITLE:		
			J. MATTAS	11-4-14	IQ PUMP MICRO DIMENSION DRAWING		
		CHECKED:		DATE:	FRAME SIZE 1		
		J. PIOTROWSKI		11-10-14	NEMA TYPE 4X ENCLOSURE (IP66)		
		TECH:		DATE:	2V0006, 4V0002 AND 4V0004		
		J. BORJA		11-11-14	SIZE	REVISION	PAGE
		APPROVED:		DATE:	A	R00	2 of 6
		J. CAIRO		11-18-14	DRAWING #:		
UNITS:	SCALE:	ORIGINAL DESIGN:		DATE:	DD.IQPM.FR1.N4		
IN[mm]	BY VIEW			-			

TERMINAL AND WIRING INFORMATION FOR: PW4V0002G

NOTE: REFER TO PAGE 6 FOR 24 VOLT OPTION KIT DETAILS

TERMINAL AND WIRING, GENERAL VIEWS (SCALE 1:6)

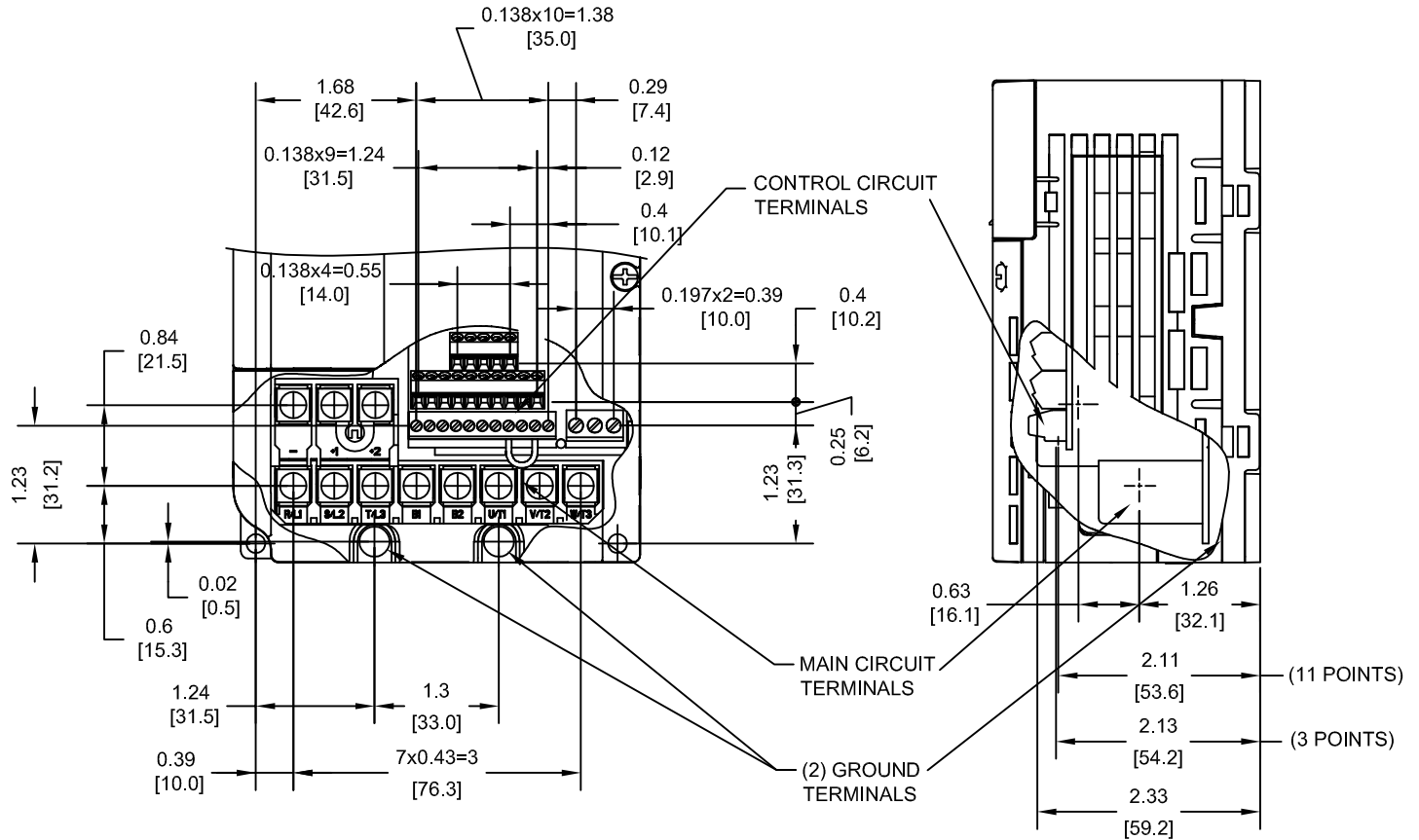


TERMINAL AND WIRE SPECIFICATIONS FOR MAIN CIRCUIT AND GROUND

MODEL #	TERMINAL SCREW	CLAMPING TORQUE lb.in.(N.m)	WIRE RANGE AWG(mm ²)
CIMR-PW	M4	10.6 TO 13.3 (1.2 TO 1.5)	22-10 (0.33-5.5)

NOTE: RATINGS APPLY TO BOTH FACTORY AND FIELD WIRING
REFER TO APPLICABLE CODES FOR PROPER WIRE TYPE AND SIZE

TERMINAL AND WIRING DETAILS (SCALE 1:2)



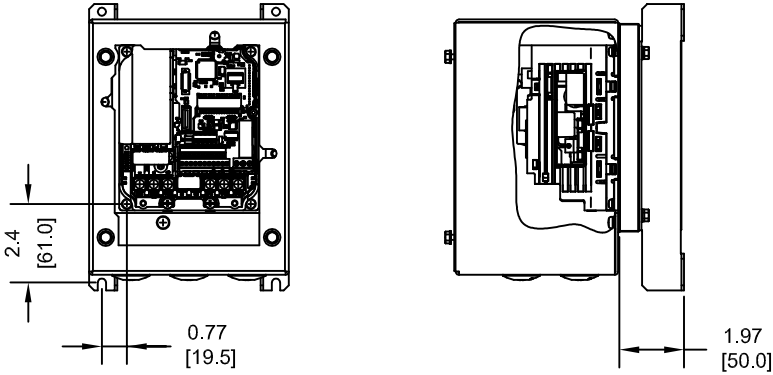
FOR ADDITIONAL DETAILS AND SPECIFICATIONS, CONSULT MANUAL

TOLERANCES / REFERENCES:			DRAWN: J. MATTAS CHECKED: J. PIOTROWSKI TECH: J. BORJA APPROVED: J. CAIRO ORIGINAL DESIGN: -	DATE 11-4-14 DATE 11-10-14 DATE 11-11-14 DATE 11-18-14 DATE -	TITLE: IQ PUMP MICRO DIMENSION DRAWING FRAME SIZE 1 NEMA TYPE 4X ENCLOSURE (IP66) 2V0006, 4V0002 AND 4V0004 SIZE A REVISION R00 PAGE 3 of 6
UNITS: IN[mm]	SCALE: BY VIEW		THIS DOCUMENT AND INFORMATION CONTAINED IN IT ARE CONFIDENTIAL, AND CANNOT BE COPIED OR DISCLOSED IN WHOLE OR IN PART WITHOUT THE EXPRESS WRITTEN CONSENT OF YASKAWA AMERICA, INC.	DRAWING #: DD.IQPM.FR1.N4	

TERMINAL AND WIRING INFORMATION FOR: PW4V0004G

NOTE: REFER TO PAGE 6 FOR 24 VOLT OPTION KIT DETAILS

TERMINAL AND WIRING, GENERAL VIEWS (SCALE 1:6)

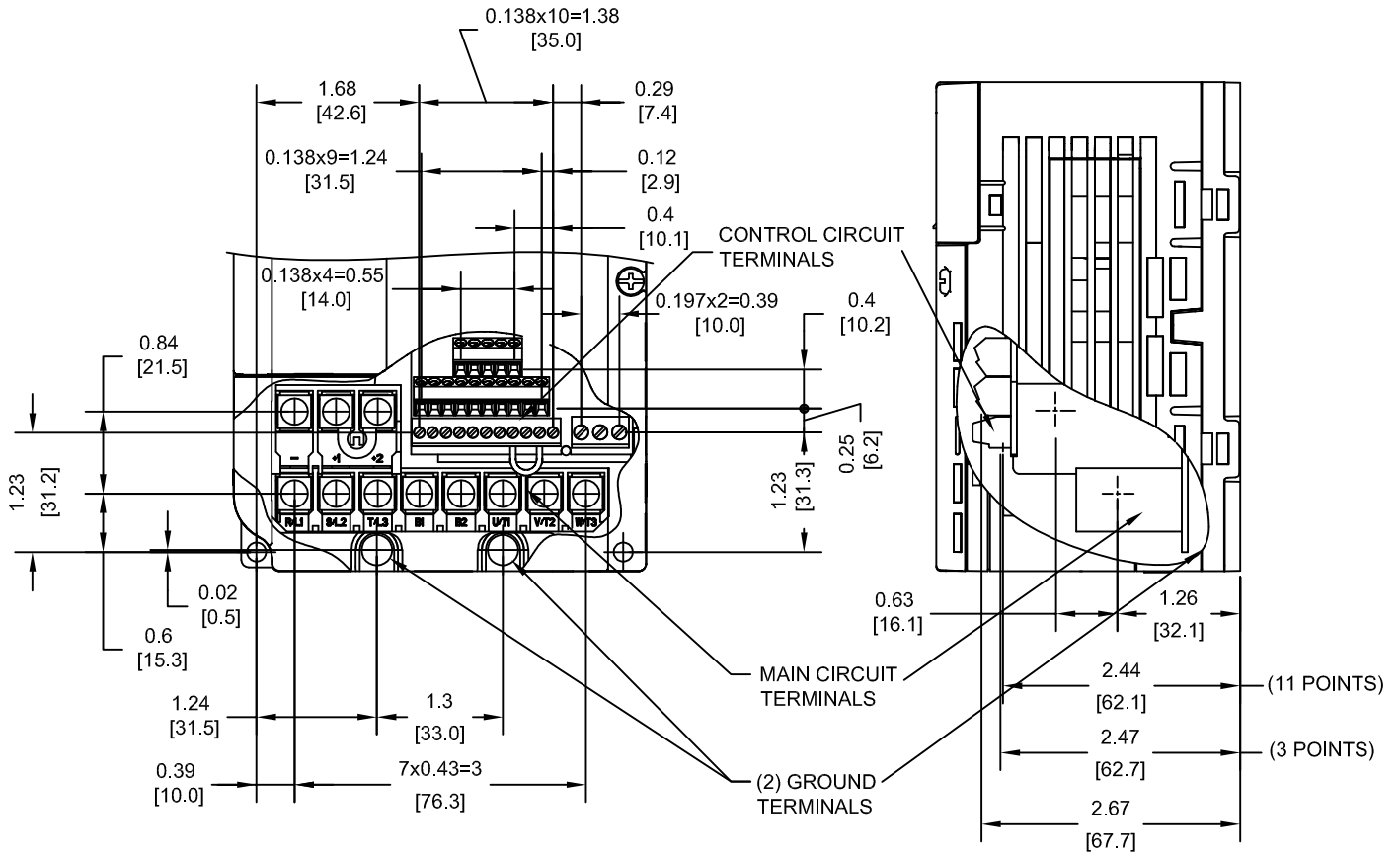


TERMINAL AND WIRE SPECIFICATIONS FOR MAIN CIRCUIT AND GROUND

MODEL #	TERMINAL SCREW	CLAMPING TORQUE lb.in.(N.m.)	WIRE RANGE AWG(mm ²)
4V0004G	M4	10.6 TO 13.3 (1.2 TO 1.5)	22-10 (0.33-5.5)

NOTE: RATINGS APPLY TO BOTH FACTORY AND FIELD WIRING
REFER TO APPLICABLE CODES FOR PROPER WIRE TYPE AND SIZE

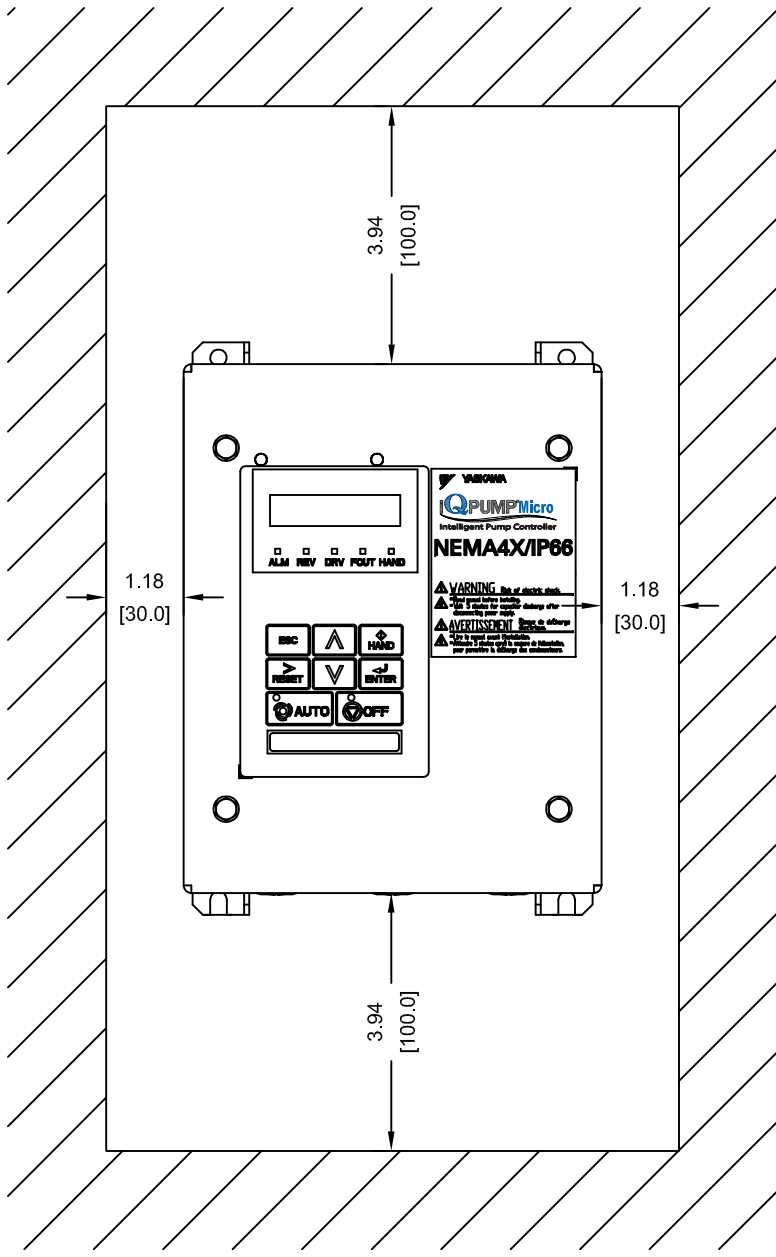
TERMINAL AND WIRING DETAILS (SCALE 1:2)



FOR ADDITIONAL DETAILS AND SPECIFICATIONS, CONSULT MANUAL

TOLERANCES / REFERENCES:		<p>YASKAWA</p> <p>THIS DOCUMENT AND INFORMATION CONTAINED IN IT ARE CONFIDENTIAL, AND CANNOT BE COPIED OR DISCLOSED IN WHOLE OR IN PART WITHOUT THE EXPRESS WRITTEN CONSENT OF YASKAWA AMERICA, INC.</p>	DRAWN: J. MATTAS CHECKED: J. PIOTROWSKI TECH: J. BORJA APPROVED: J. CAIRO ORIGINAL DESIGN: -	DATE: 11-4-14 DATE: 11-10-14 DATE: 11-11-14 DATE: 11-18-14 DATE: -	TITLE: IQ PUMP MICRO DIMENSION DRAWING FRAME SIZE 1 NEMA TYPE 4X ENCLOSURE (IP66) 2V0006, 4V0002 AND 4V0004
UNITS: IN[mm]	SCALE: BY VIEW		SIZE: A REVISION: R00 DRAWING #: DD.IQPM.FR1.N4	PAGE: 4 of 6	

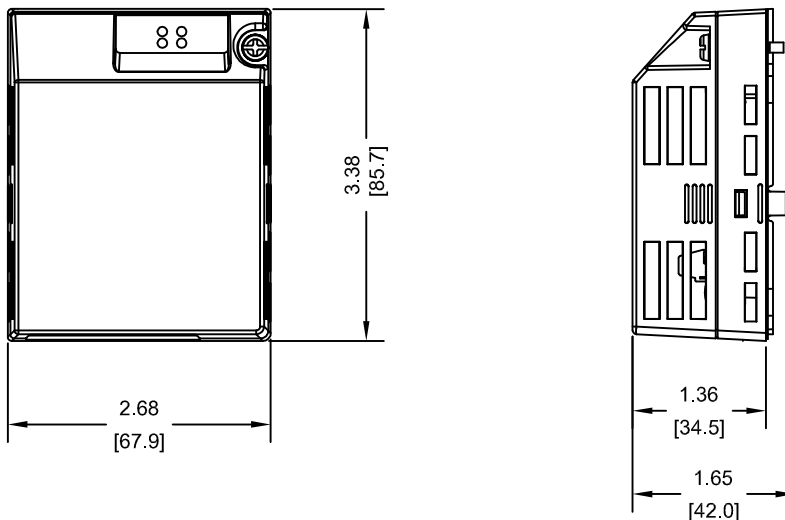
MINIMUM INSTALLATION CLEARANCES (SCALE 1:3)



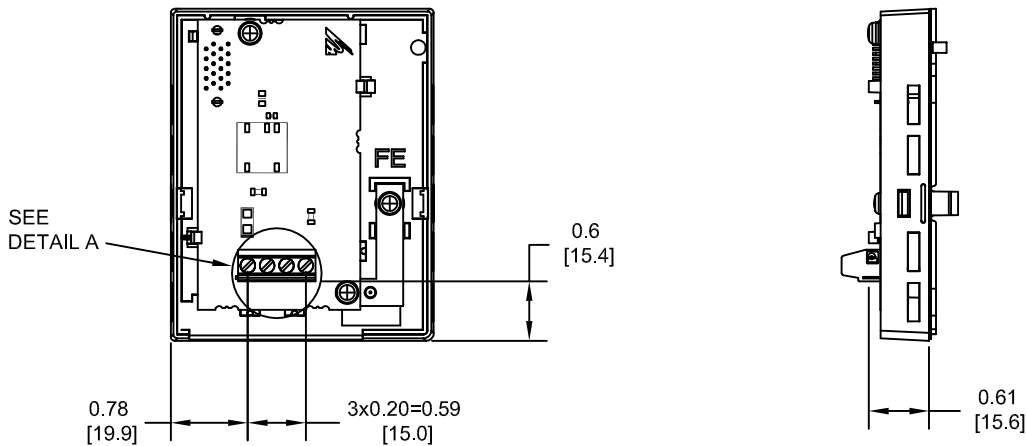
FOR ADDITIONAL DETAILS AND SPECIFICATIONS, CONSULT MANUAL

TOLERANCES / REFERENCES: YASKAWA THIS DOCUMENT AND INFORMATION CONTAINED IN IT ARE CONFIDENTIAL, AND CANNOT BE COPIED OR DISCLOSED IN WHOLE OR IN PART WITHOUT THE EXPRESS WRITTEN CONSENT OF YASKAWA AMERICA, INC.		DRAWN: J. MATTAS	DATE: 11-4-14	TITLE: IQ PUMP MICRO DIMENSION DRAWING FRAME SIZE 1 NEMA TYPE 4X ENCLOSURE (IP66) 2V0006, 4V0002 AND 4V0004	
		CHECKED: J. PIOTROWSKI	DATE: 11-10-14	SIZE: A REVISION: R00 PAGE: 5 of 6	
		TECH: J. BORJA	DATE: 11-11-14	DRAWING #: DD.IQPM.FR1.N4	
		APPROVED: J. CAIRO	DATE: 11-18-14		
UNITS: IN[mm]	SCALE: BY VIEW	ORIGINAL DESIGN: -	DATE: -		

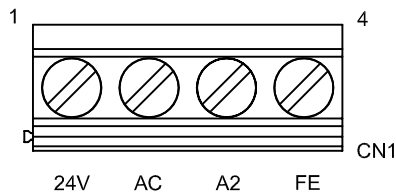
24V OPTION KIT (SCALE 1:2)



24V OPTION KIT (SCALE 1:2)
COVER REMOVED




DETAIL A (SCALE 2:1)



24V OPTION KIT - SPECIFICATIONS

TERMINAL SCREW	CLAMPING TORQUE lb.in.(N.m.)	WIRE RANGE AWG(mm ²)	OPTION KIT WEIGHT LBS(Kg)
M3	4.4 TO 5.3 (0.5 TO 0.6)	30-14 (0.05-2.0)	0.1 (0.05)

FOR ADDITIONAL DETAILS AND SPECIFICATIONS, CONSULT MANUAL

TOLERANCES / REFERENCES:		 THIS DOCUMENT AND INFORMATION CONTAINED IN IT ARE CONFIDENTIAL, AND CANNOT BE COPIED OR DISCLOSED IN WHOLE OR IN PART WITHOUT THE EXPRESS WRITTEN CONSENT OF YASKAWA AMERICA, INC.	DRAWN: J. MATTAS DATE: 11-4-14	TITLE: IQ PUMP MICRO DIMENSION DRAWING FRAME SIZE 1 NEMA TYPE 4X ENCLOSURE (IP66) 2V0006, 4V0002 AND 4V0004
UNITS: IN[mm]	SCALE: BY VIEW		CHECKED: J. PIOTROWSKI DATE: 11-10-14	TECH: J. BORJA DATE: 11-11-14
			APPROVED: J. CAIRO DATE: 11-18-14	SIZE: A REVISION: R00 PAGE: 6 of 6
			ORIGINAL DESIGN: -	DRAWING #: DD.IQPM.FR1.N4