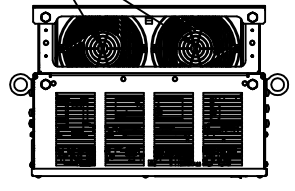
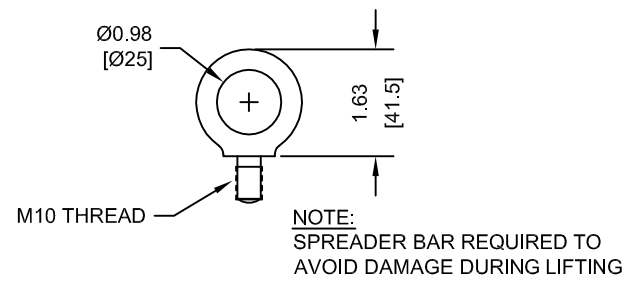


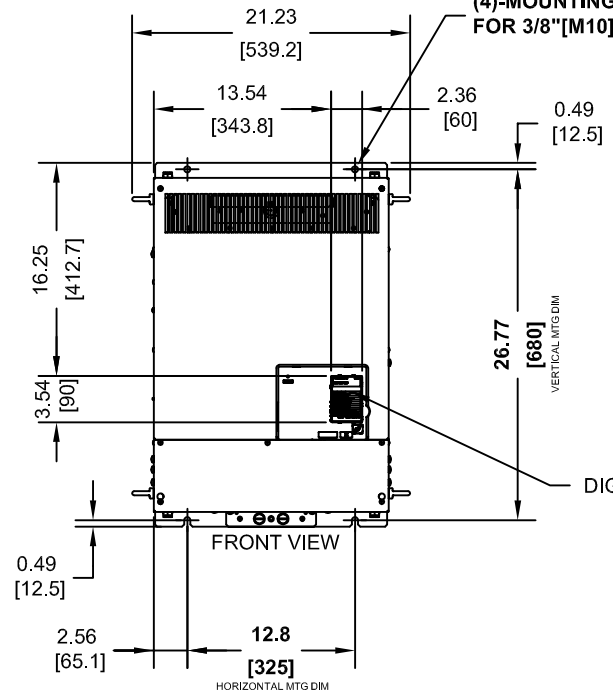
(2) EXTERNAL COOLING FANS



LIFTING AND EYEBOLT DETAILS

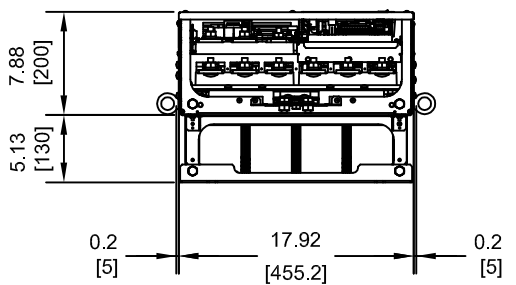
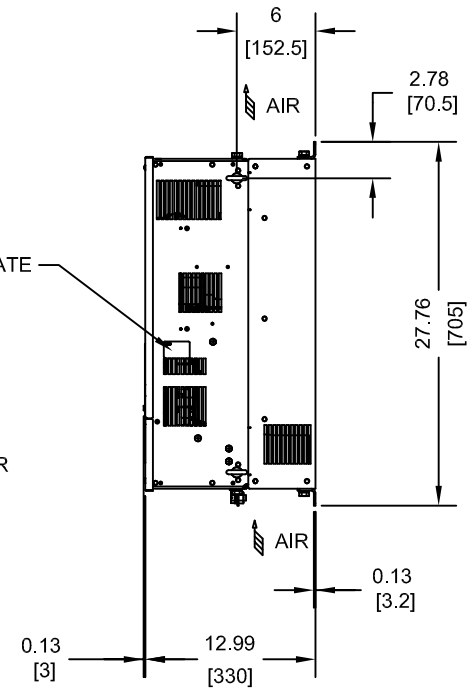


(4)-MOUNTING HOLES FOR 3/8" [M10] SCREWS



NAMEPLATE

DIGITAL OPERATOR



MODEL # CIMR-LE	VOLTAGE THREE-PHASE (VAC)	OUTPUT CURRENT (A) 3 MIN., 50% ED	WEIGHT LBS (Kg)	HEAT LOSS (W) Fc=5kHz		
				INT	EXT	TOT
2A0269AXX	200/240	268.8	167 (76)	466	1514	1980
2A0354AXX	200/240	353.8	176 (80)	588	1936	2524
4A0225AXX	380/480	225.0	174 (79)	541	1771	2312

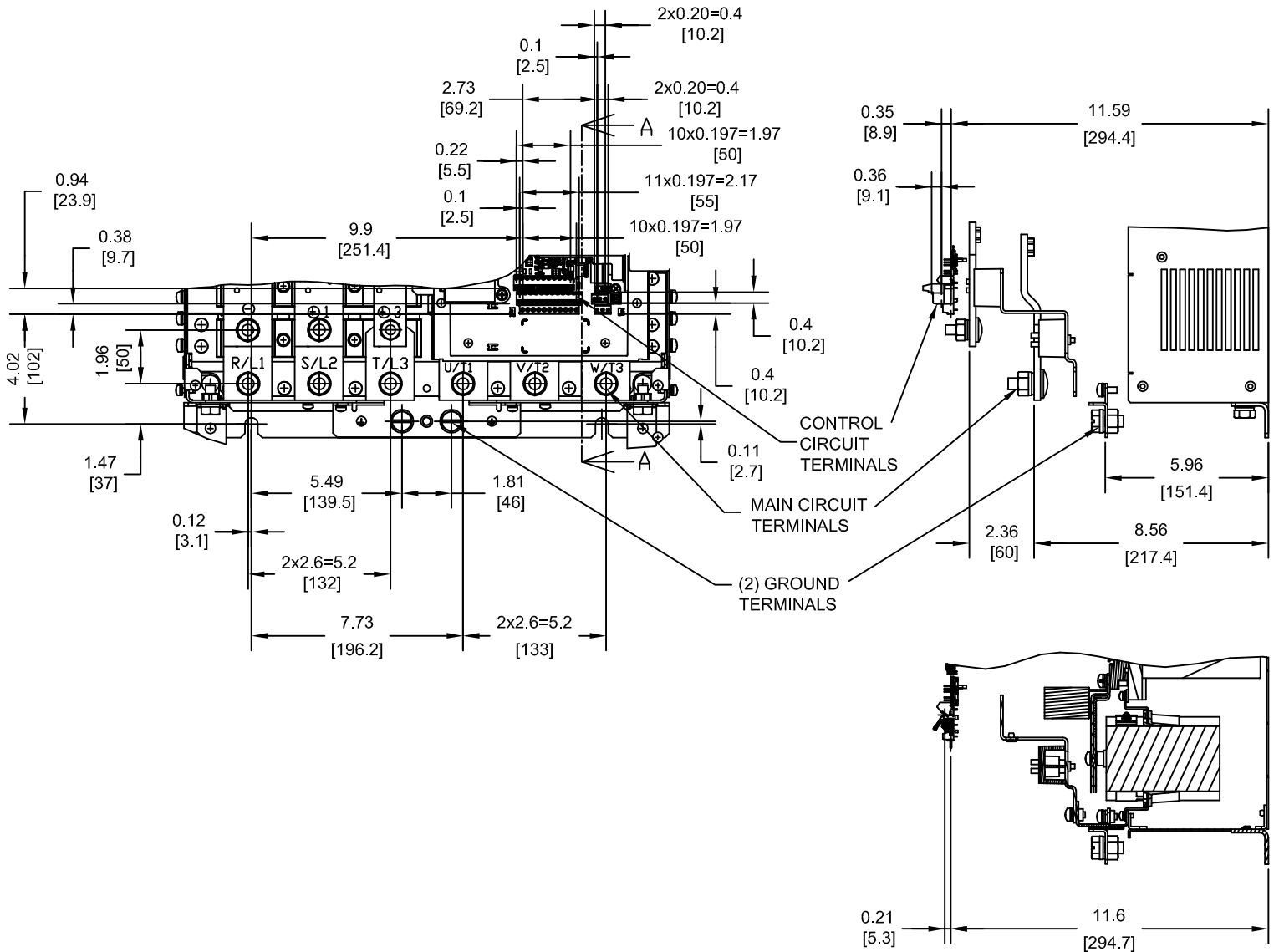
NOTE:
XX DENOTES AA-ZZ

INT=INTERNAL COMPONENTS
EXT=EXTERNAL HEATSINK
TOT=TOTAL

FOR ADDITIONAL DETAILS AND SPECIFICATIONS, CONSULT MANUAL

TOLERANCES / REFERENCES:		<p>THIS DOCUMENT AND INFORMATION CONTAINED IN IT ARE CONFIDENTIAL, AND CANNOT BE COPIED OR DISCLOSED IN WHOLE OR IN PART WITHOUT THE EXPRESS WRITTEN CONSENT OF YASKAWA AMERICA, INC.</p>	DRAWN: J. MATTAS CHECKED: J. PIOTROWSKI TECH: L. UDDIN APPROVED: J. CAIRO ORIGINAL DESIGN: -	DATE: 10-21-13 DATE: 11-24-13 DATE: 12-2-13 DATE: 12-21-13 DATE: -	TITLE: L1000E DIMENSION DRAWING FRAME SIZE 11 IP00 ENCLOSURE 2A0269, 2A0354 & 4A0225
UNITS: IN [mm]	SCALE: 1:15		SIZE: A	REVISION: R00	PAGE: 1 of 4
			DRAWING #: DD.L1KE.FR11.IP00		

TERMINAL AND WIRING DETAILS (SCALE 1:6)
LE2A0269 AND LE2A0354 ONLY



SECTION A-A

TERMINAL AND WIRE SPECIFICATIONS FOR
MAIN CIRCUIT AND GROUND

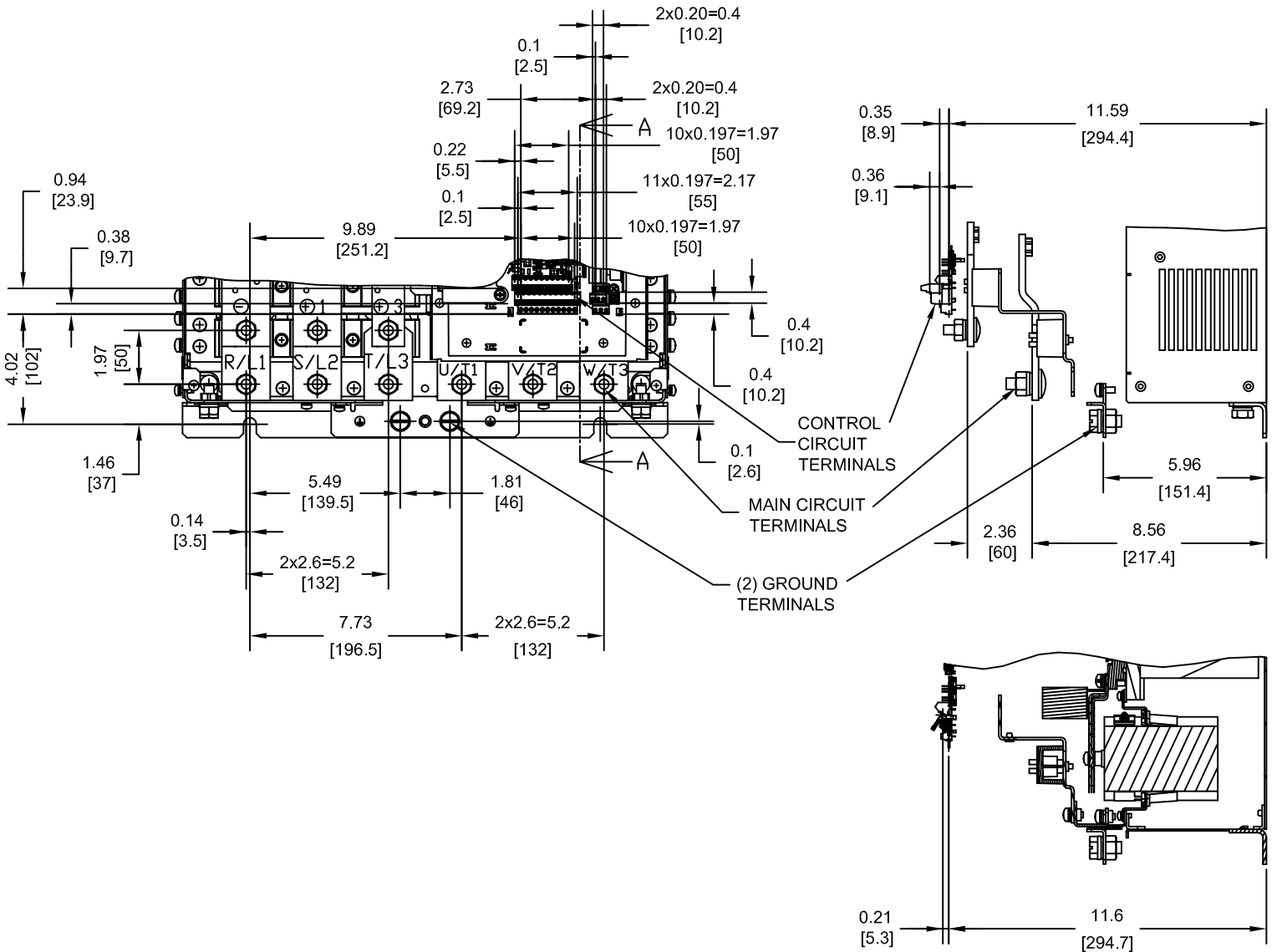
MODEL # CIMR-LE	TERMINAL SYMBOL	TERMINAL SCREW	CLAMPING TORQUE lb.in.(N.m.)
2A0269 2A0354	R/L1, S/L2, T/L3	M12	283.2 TO 354.0 (32 TO 40)
	U/T1, V/T2, W/T3		
	⊖, ⊕1	M10	
	⊕3		
	⊕		

NOTE: REFER TO APPLICABLE CODES FOR PROPER WIRE TYPE AND SIZE

FOR ADDITIONAL DETAILS AND SPECIFICATIONS, CONSULT MANUAL

TOLERANCES / REFERENCES:			DRAWN: J. MATTAS DATE: 10-21-13	TITLE: L1000E DIMENSION DRAWING FRAME SIZE 11 IP00 ENCLOSURE 2A0269, 2A0354 & A0225
UNITS: IN [mm] SCALE: BY VIEW			CHECKED: J. PIOTROWSKI DATE: 11-24-13	TECH: L. UDDIN DATE: 12-2-13
THIS DOCUMENT AND INFORMATION CONTAINED IN IT ARE CONFIDENTIAL, AND CANNOT BE COPIED OR DISCLOSED IN WHOLE OR IN PART WITHOUT THE EXPRESS WRITTEN CONSENT OF YASKAWA AMERICA, INC.		APPROVED: J. CAIRO DATE: 12-21-13	ORIGINAL DESIGN: - DATE: -	SIZE: A REVISION: R00 PAGE: 2 of 4 DRAWING #: DD.L1KE.FR11.IP00

TERMINAL AND WIRING DETAILS (SCALE 1:6)
LE4A0225 ONLY



SECTION A-A

TERMINAL AND WIRE SPECIFICATIONS FOR
MAIN CIRCUIT AND GROUND

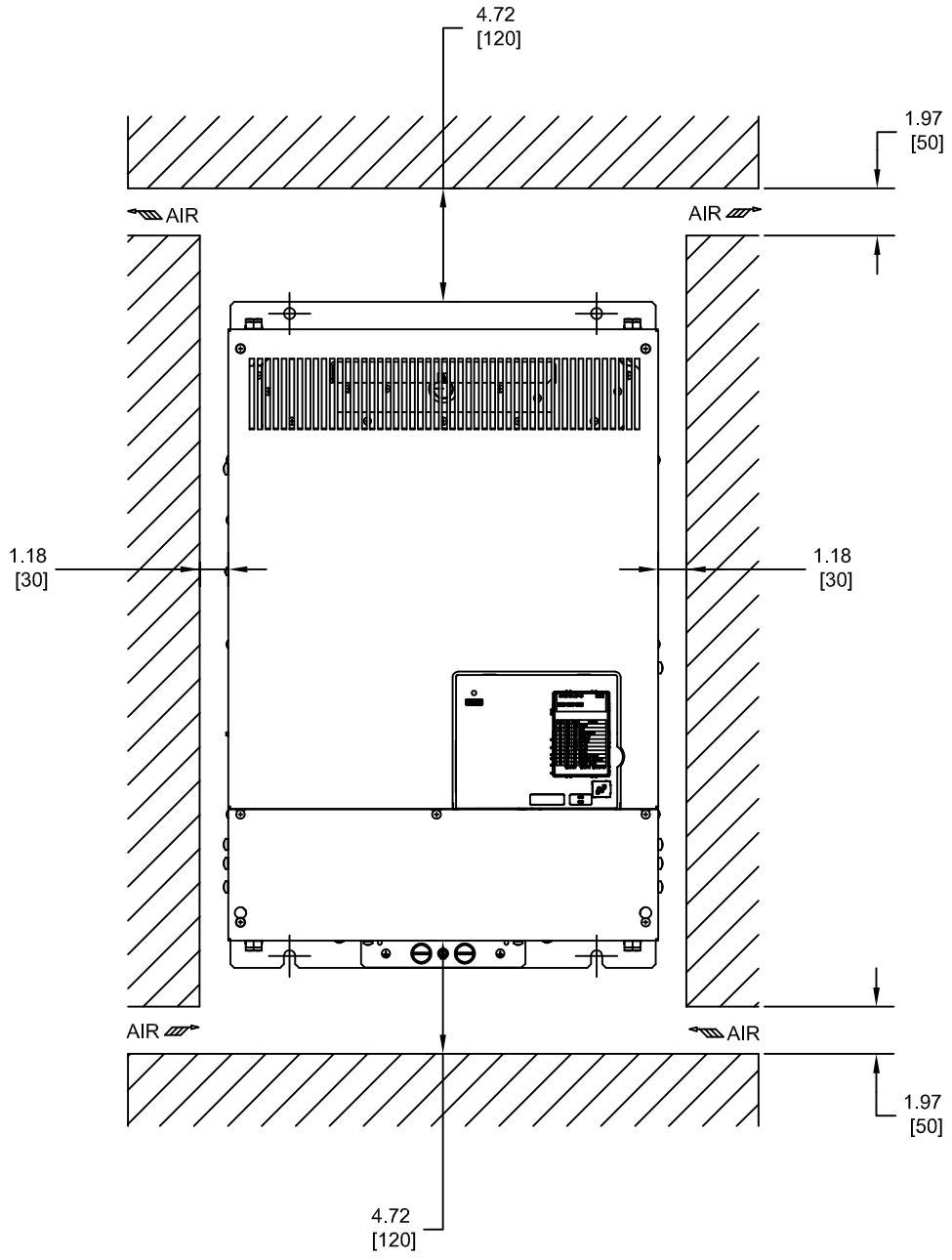
MODEL # CIMR-LE	TERMINAL SYMBOL	TERMINAL SCREW	CLAMPING TORQUE lb.in.(N.m.)
4A0225	R/L1, S/L2, T/L3	M10	159.3 TO 203.6 (18 TO 23)
	U/T1, V/T2, W/T3		
	⊖, ⊕1		
	⊕3	M10	
	⊕	M10	

NOTE: REFER TO APPLICABLE CODES FOR PROPER WIRE TYPE AND SIZE


FOR ADDITIONAL DETAILS AND SPECIFICATIONS, CONSULT MANUAL

TOLERANCES / REFERENCES:			DRAWN: J. MATTAS DATE: 10-21-13	TITLE: L1000E DIMENSION DRAWING FRAME SIZE 11 IP00 ENCLOSURE 2A0269, 2A0354 & 4A0225
UNITS: IN [mm] SCALE: BY VIEW			CHECKED: J. PIOTROWSKI DATE: 11-24-13	TECH: L. UDDIN DATE: 12-2-13
THIS DOCUMENT AND INFORMATION CONTAINED IN IT ARE CONFIDENTIAL, AND CANNOT BE COPIED OR DISCLOSED IN WHOLE OR IN PART WITHOUT THE EXPRESS WRITTEN CONSENT OF YASKAWA AMERICA, INC.		APPROVED: J. CAIRO DATE: 12-21-13	ORIGINAL DESIGN: - DATE: -	SIZE: A REVISION: R00 PAGE: 3 of 4 DRAWING #: DD.L1KE.FR11.IP00

MINIMUM INSTALLATION CLEARANCES (SCALE 1:8)



FOR ADDITIONAL DETAILS AND SPECIFICATIONS, CONSULT MANUAL

TOLERANCES / REFERENCES:	 THIS DOCUMENT AND INFORMATION CONTAINED IN IT ARE CONFIDENTIAL, AND CANNOT BE COPIED OR DISCLOSED IN WHOLE OR IN PART WITHOUT THE EXPRESS WRITTEN CONSENT OF YASKAWA AMERICA, INC.	DRAWN: J. MATTAS	DATE 10-21-13	TITLE: L1000E DIMENSION DRAWING		
		CHECKED: J. PIOTROWSKI	DATE 11-24-13	FRAME SIZE 11		
		TECH: L. UDDIN	DATE 12-2-13	IP00 ENCLOSURE		
		APPROVED: J. CAIRO	DATE 12-21-13	2A0269, 2A0354 & 4A0225		
UNITS: IN [mm]	SCALE: BY VIEW	ORIGINAL DESIGN: -	DATE -	SIZE A	REVISION R00	PAGE 4 of 4
			DRAWING #: DD.L1KE.FR11.IP00			