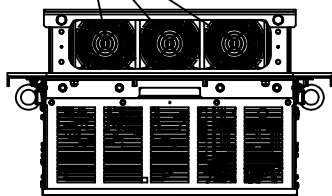
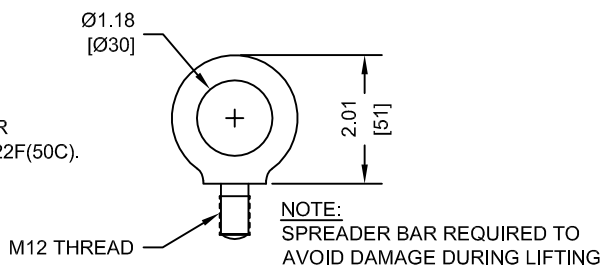


(3) EXTERNAL COOLING FANS

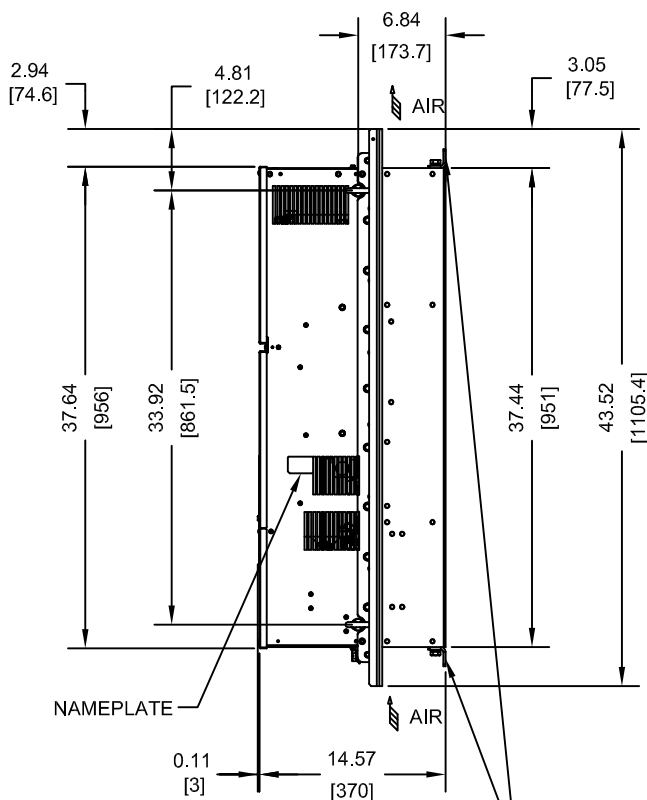
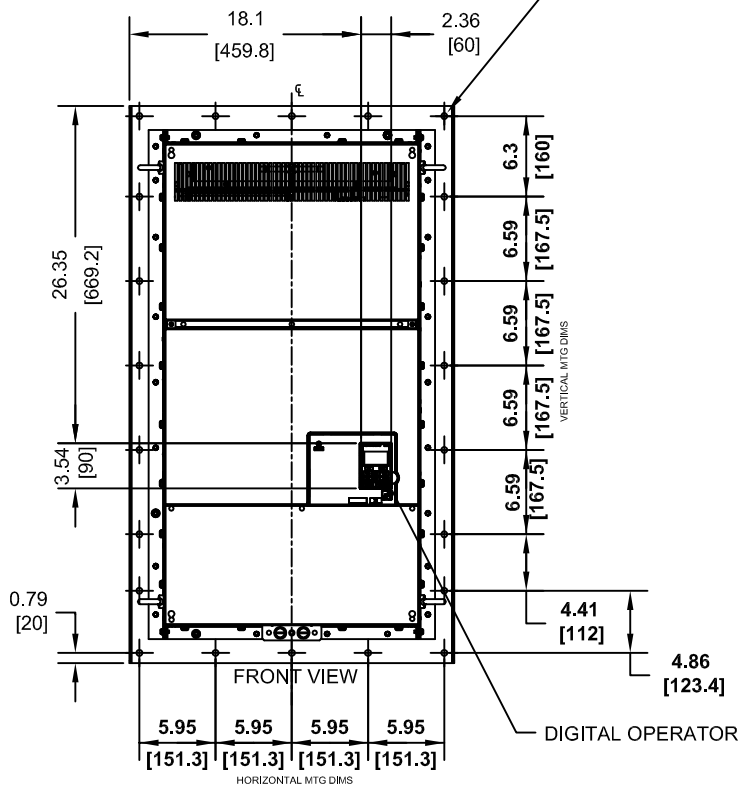


NOTE:
MAXIMUM SURROUNDING AIR
TEMPERATURE RATING IS 122F(50C).

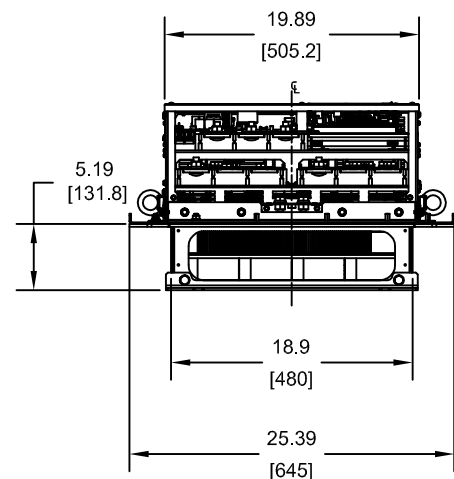
LIFTING AND EYEBOLT DETAILS



(22)-MOUNTING HOLES
FOR 3/8"[M10] SCREWS



(2)-MOUNTING BRACKETS
USED DURING TRANSPORT ONLY
REMOVE BEFORE INSTALLING



| MODEL # CIMR-PU | INPUT TYPE | VOLTAGE 3-PHASE (VAC) | OUTPUT CURRENT (A) | WEIGHT LBS (Kg) | HEAT LOSS (W) (Fc=2kHz) | | |
|--------------------|---------------|-----------------------------|--------------------------|--------------------|----------------------------|------|------|
| | | | | | INT | EXT | TOT |
| 4T0414UXX | 12 PULSE | 380/480 | 414 | 280 (127) | 1083 | 3443 | 4526 |

NOTES:
XX DENOTES AA-ZZ

INT=INTERNAL COMPONENTS
EXT=EXTERNAL HEATSINK
TOT=TOTAL

FOR ADDITIONAL DETAILS AND SPECIFICATIONS, CONSULT MANUAL

TOLERANCES / REFERENCES:



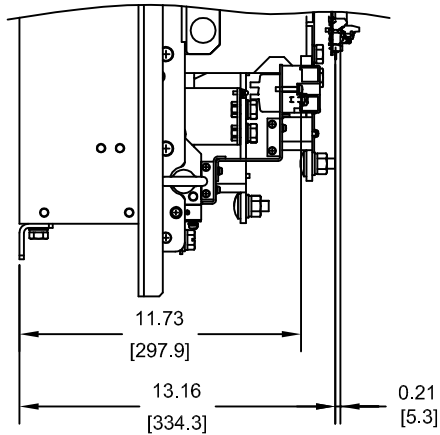
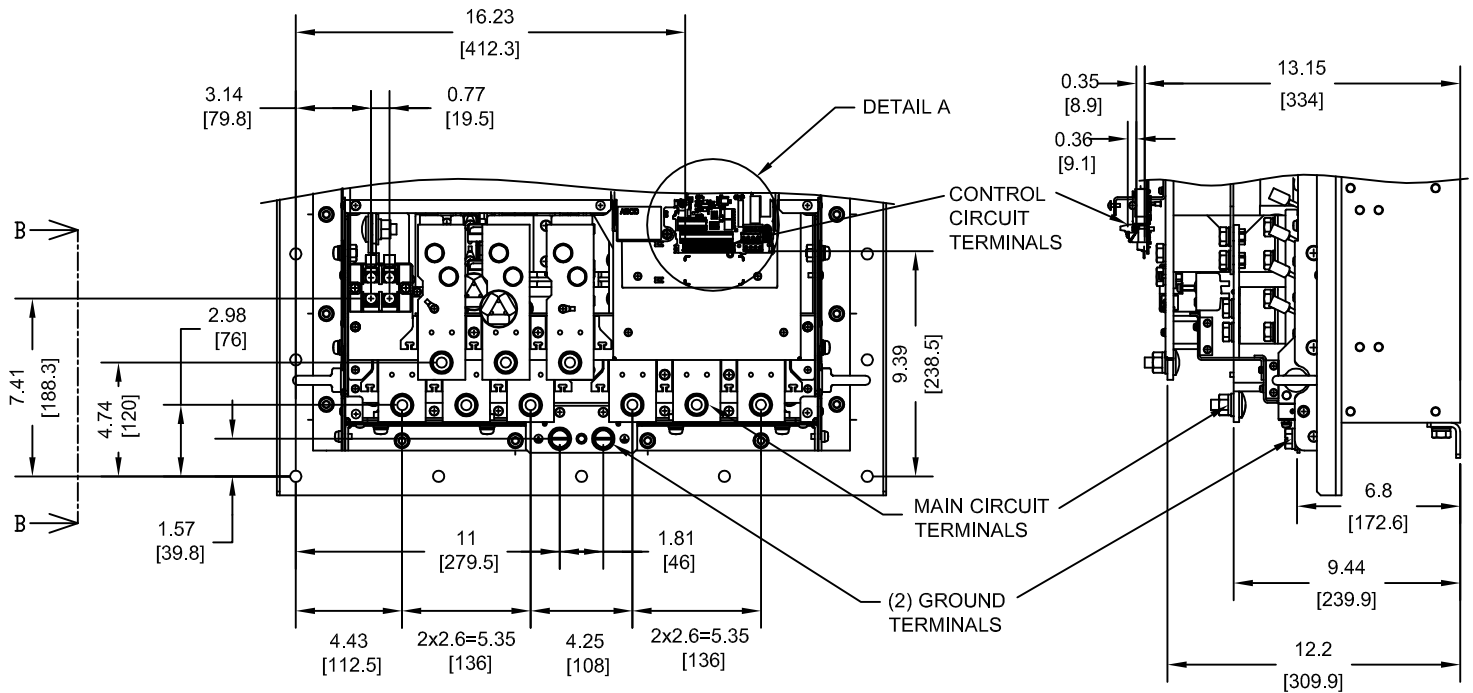
THIS DOCUMENT AND INFORMATION CONTAINED
IN IT ARE CONFIDENTIAL, AND CANNOT BE
COPIED OR DISCLOSED IN WHOLE OR IN PART
WITHOUT THE EXPRESS WRITTEN CONSENT
OF YASKAWA AMERICA, INC.

| | | | |
|---------------------------|------------------|---|-----------------|
| DRAWN: J. MATTAS | DATE 11-13-12 | TITLE: P1000 DIMENSION DRAWING FRAME SIZE 13B DESIGNED FOR IP54/TYPE 12 ENCLOSURES | |
| CHECKED: J. PIOTROWSKI | DATE 1-18-13 | 4T0414U | |
| TECH: J. BORJA | DATE 1-22-13 | SIZE A | REVISION R00 |
| APPROVED: J. CAIRO | DATE 5-29-13 | PAGE 1 of 3 | |
| ORIGINAL DESIGN: - | DATE - | DRAWING #: DD.P1K.FR13B.FLNG | |

UNITS:
IN [mm]

SCALE:
1:15

TERMINAL AND WIRING DETAILS (SCALE 1:8)

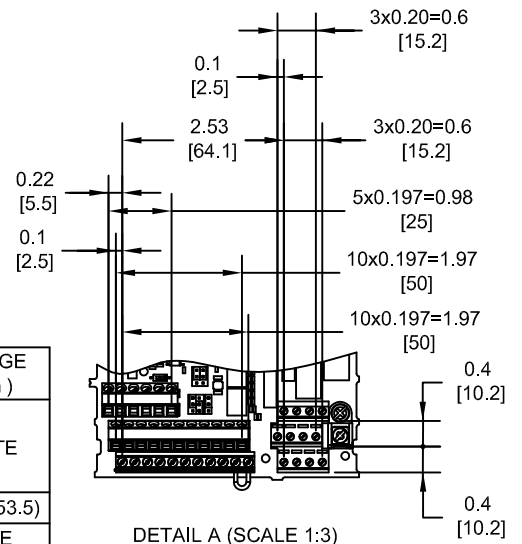


SECTION B-B

TERMINAL AND WIRE SPECIFICATIONS FOR MAIN CIRCUIT AND GROUND

| MODEL # CIMR-PU | TERMINAL SYMBOL | TERMINAL SCREW | CLAMPING TORQUE lb.in.(N.m.) | WIRE RANGE AWG(mm) |
|--------------------|------------------------|----------------|---------------------------------|-----------------------|
| 4T0414U | R/L1, S/L2, T/L3 | M12 | 283.2 TO 354.0 (32 TO 40) | SEE NOTE |
| | R1/L11, S1/L21, T1/L31 | | | |
| | U/T1, V/T2, W/T3 | M6 | 22.1 TO 26.6 (2.5 TO 3.0) | 22-1/0 (0.3-53.5) |
| | ⊖, ⊕3 | | | |
| | ⊕ | M12 | 283.2 TO 354.0 (32 TO 40) | SEE NOTE |

NOTE: REFER TO APPLICABLE CODES FOR PROPER WIRE TYPE AND SIZE

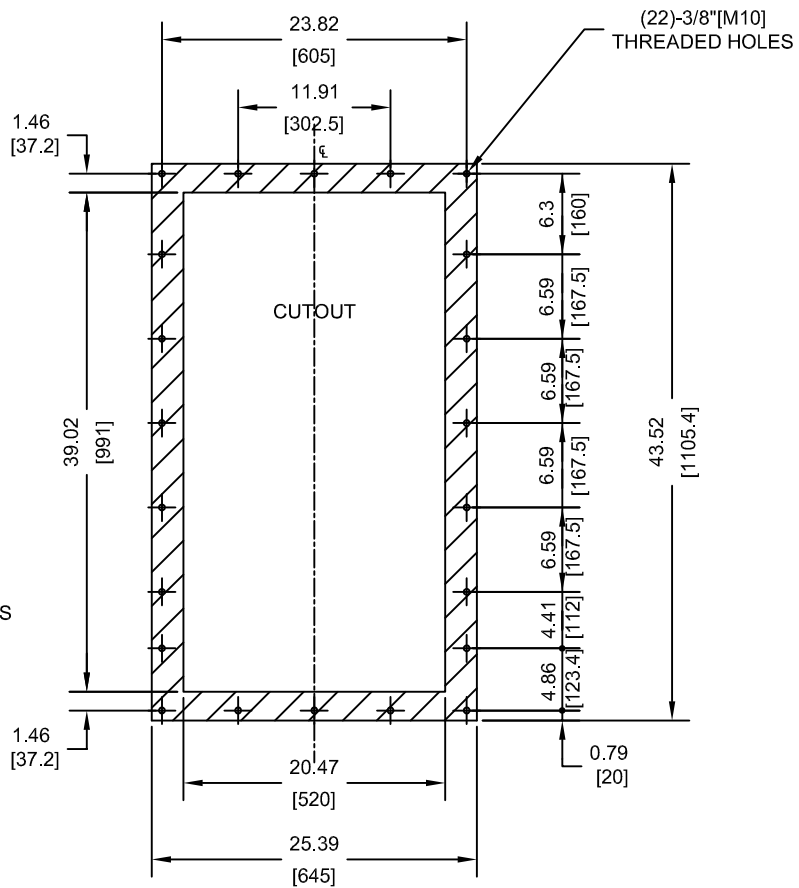


DETAIL A (SCALE 1:3)

FOR ADDITIONAL DETAILS AND SPECIFICATIONS, CONSULT MANUAL

| | | | | | |
|--------------------------|-------------------|--|--|---|--|
| TOLERANCES / REFERENCES: | | | DRAWN: J. MATTAS CHECKED: J. PIOTROWSKI TECH: J. BORJA APPROVED: J. CAIRO ORIGINAL DESIGN: - | DATE: 11-13-12 DATE: 1-18-13 DATE: 1-22-13 DATE: 5-29-13 DATE: - | TITLE: P1000 DIMENSION DRAWING FRAME SIZE 13B DESIGNED FOR IP54/TYPE 12 ENCLOSURES 4T0414U |
| UNITS: IN[mm] | SCALE: BY VIEW | | THIS DOCUMENT AND INFORMATION CONTAINED IN IT ARE CONFIDENTIAL, AND CANNOT BE COPIED OR DISCLOSED IN WHOLE OR IN PART WITHOUT THE EXPRESS WRITTEN CONSENT OF YASKAWA AMERICA, INC. | SIZE A REVISION R00 DRAWING #: DD.P1K.FR13B.FLNG | PAGE 2 of 3 |


**PANEL CUTOUT FOR EXTERNAL HEATSINK
MOUNTING CONFIGURATION (SCALE 1:15)**



NOTES:

1. CUTOUT TOLERANCES:
+/- 0.02IN (0.5MM)
2. EXPOSED HEATSINK DEPTH
D=5.19" MINUS PANEL THICKNESS
3. MIN. RECOMMENDED PANEL
THICKNESS: 10 GA

FOR ADDITIONAL DETAILS AND SPECIFICATIONS, CONSULT MANUAL

| | | | | | |
|--------------------------|-------------------|--|---|---|---|
| TOLERANCES / REFERENCES: | |  <p><i>THIS DOCUMENT AND INFORMATION CONTAINED IN IT ARE CONFIDENTIAL, AND CANNOT BE COPIED OR DISCLOSED IN WHOLE OR IN PART WITHOUT THE EXPRESS WRITTEN CONSENT OF YASKAWA AMERICA, INC.</i></p> | DRAWN: J. MATTAS CHECKED: J. PIOTROWSKI TECH: J. BORJA APPROVED: J. CAIRO ORIGINAL DESIGN: - | DATE: 11-13-12 DATE: 1-18-13 DATE: 1-22-13 DATE: 5-29-13 DATE: - | TITLE: P1000 DIMENSION DRAWING FRAME SIZE 13B DESIGNED FOR IP54/TYPE 12 ENCLOSURES 4T0414U DRAWING #: DD.P1K.FR13B.FLNG |
| UNITS: IN[mm] | SCALE: BY VIEW | | SIZE A | REVISION R00 | PAGE 3 of 3 |