

MODEL # CIMR-VU	VOLTAGE THREE PHASE (VAC)	OUTPUT CURRENT (A)		WEIGHT LBS (Kg)	HEAT LOSS (W)					
		ND	HD		ND (Fc=2kHz)			HD (Fc=8kHz)		
					INT	EXT	TOT	INT	EXT	TOT
2A0030JXX	208/240	30.0	25.0	7.0 (3.2)	88.9	246.4	335.3	72.2	231.5	303.7
2A0040JXX		40.0	33.0	7.0 (3.2)	112.8	266.7	379.5	82.8	248.5	321.3
4A0018JXX	380/480	17.5	14.8	6.8 (3.1)	80.1	181.2	261.3	62.7	166.0	228.7
4A0023JXX		23.0	18.0	7.0 (3.2)	107.7	213.4	321.1	78.1	207.1	285.2

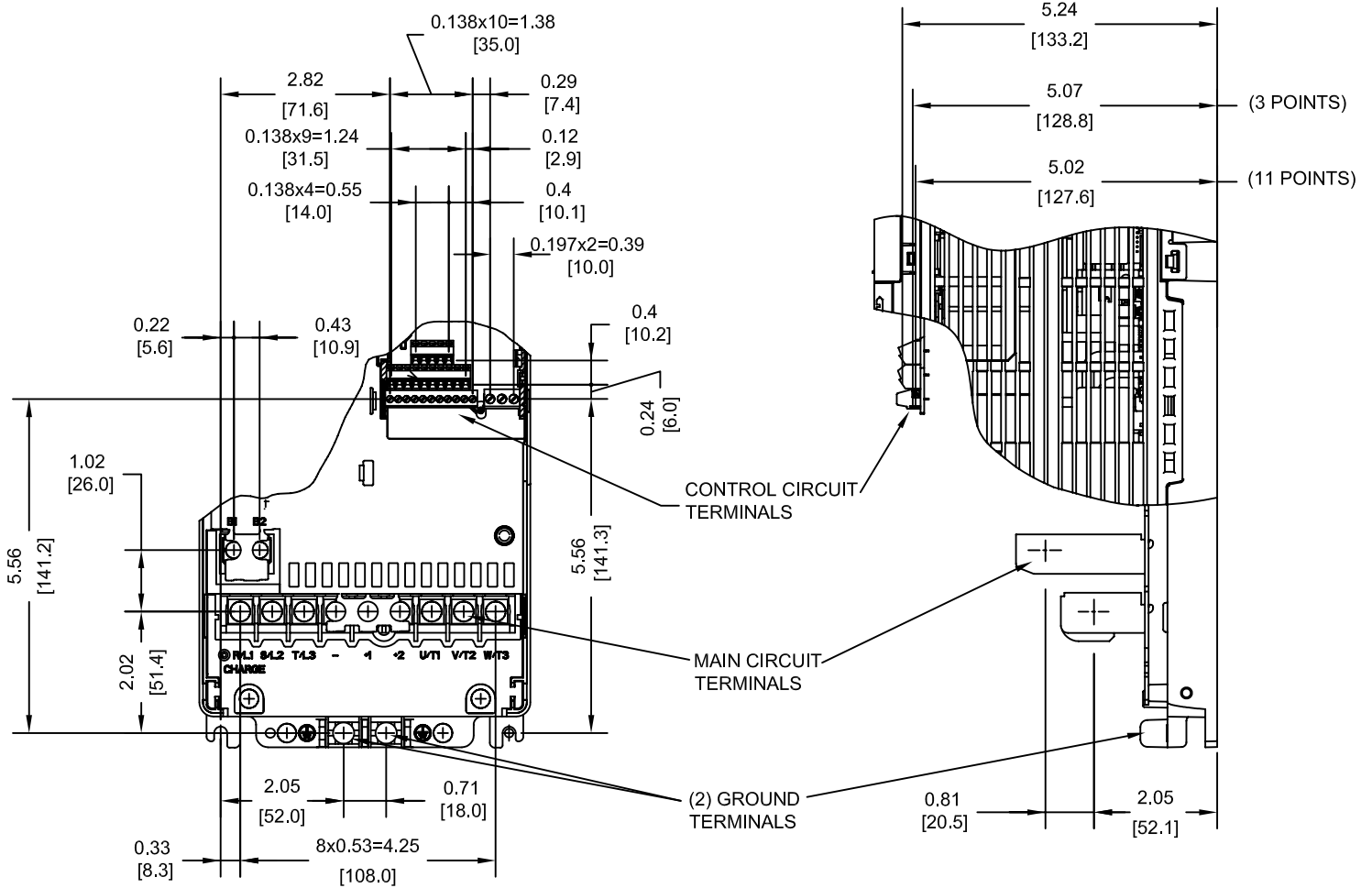
NOTE:
XX DENOTES AA-ZZ

INT=INTERNAL COMPONENTS
EXT=EXTERNAL HEATSINK
TOT=TOTAL

FOR ADDITIONAL DETAILS AND SPECIFICATIONS, CONSULT MANUAL

TOLERANCES / REFERENCES:		<p>YASKAWA The Drive for Quality™</p> <p>THIS DOCUMENT AND INFORMATION CONTAINED IN IT ARE CONFIDENTIAL, AND CANNOT BE COPIED OR DISCLOSED IN WHOLE OR IN PART WITHOUT THE EXPRESS WRITTEN CONSENT OF YASKAWA ELECTRIC AMERICA INC.</p>	DRAWN: J. MATTAS DATE 1-8-09	DATE 1-8-09	TITLE: V1000 DIMENSION DRAWING FRAME SIZE 9 FINLESS HEATSINK 2A0030J, 2A0040J, 4A0018J, 4A0023J	
UNITS: IN[mm]			CHECKED: J. PIOTROWSKI DATE 4-27-09	DATE 4-27-09		SIZE A
SCALE: 1:5			TECH: J. CAIRO DATE 7-7-09	DATE 7-7-09		REVISION R00
			APPROVED: T. SASADA DATE 7-8-09	DATE 7-8-09		PAGE 1 of 3
		ORIGINAL DESIGN: -	DATE -	DRAWING #: DD.V1K.FR9.FNL.01		

TERMINAL AND WIRING DETAILS (SCALE 1:3)



TERMINAL AND WIRE SPECIFICATIONS FOR MAIN CIRCUIT AND GROUND

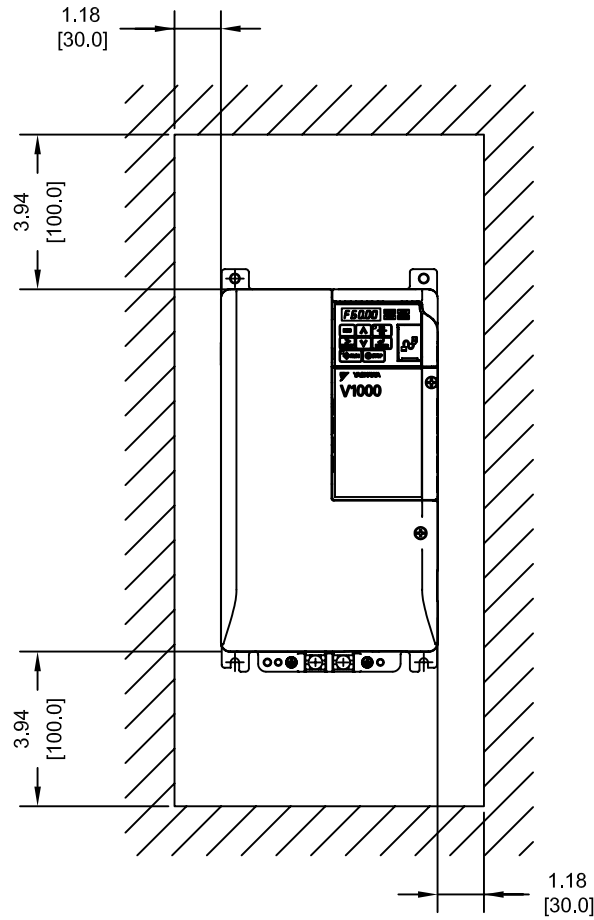
MODEL # CIMR-VU	TERMINAL SYMBOL	TERMINAL SCREW	CLAMPING TORQUE lb.in.(N.m.)	WIRE RANGE AWG(mm)
2A0030J	R/L1, S/L2, T/L3, ⊖, ⊕1, ⊕2, U/T1, V/T2, W/T3	M4	20.4 (2.3)	12-6 (3.5-14)
	B1, B2	M4	20.4 (2.3)	12-10 (3.5-5.5)
	⊕	M5	17.7-22.1 (2.0-2.5)	10-6 (5.5-14)
2A0040J	R/L1, S/L2, T/L3, ⊖, ⊕1, ⊕2, U/T1, V/T2, W/T3	M4	20.4 (2.3)	12-6 (3.5-14)
	B1, B2	M4	20.4 (2.3)	12-10 (3.5-5.5)
	⊕	M5	17.7-22.1 (2.0-2.5)	10-6 (5.5-14)
4A0018J	R/L1, S/L2, T/L3, ⊖, ⊕1, ⊕2, U/T1, V/T2, W/T3	M4	20.4 (2.3)	12-6 (3.5-14)
	B1, B2	M4	20.4 (2.3)	12-10 (3.5-5.5)
	⊕	M5	17.7-22.1 (2.0-2.5)	10-6 (5.5-14)
4A0023J	R/L1, S/L2, T/L3, ⊖, ⊕1, ⊕2, U/T1, V/T2, W/T3	M4	20.4 (2.3)	12-6 (3.5-14)
	B1, B2	M4	20.4 (2.3)	12-10 (3.5-5.5)
	⊕	M5	17.7-22.1 (2.0-2.5)	10-6 (5.5-14)

NOTE: RATINGS APPLY TO BOTH FACTORY AND FIELD WIRING
REFER TO APPLICABLE CODES FOR PROPER WIRE TYPE AND SIZE

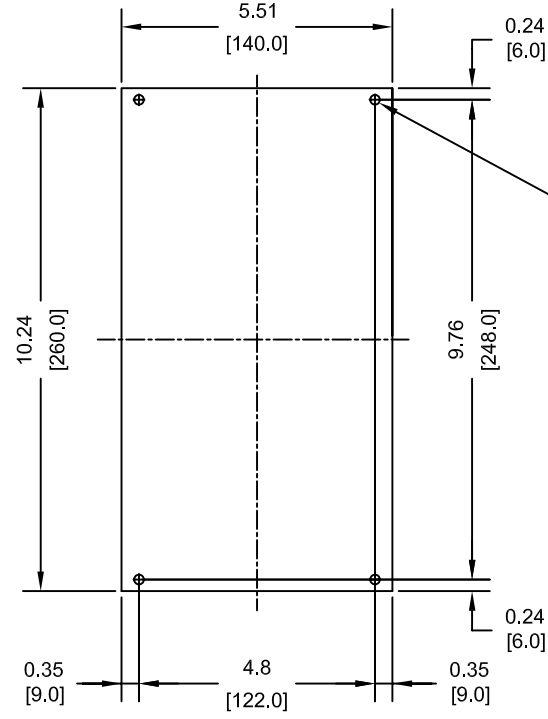
FOR ADDITIONAL DETAILS AND SPECIFICATIONS, CONSULT MANUAL

TOLERANCES / REFERENCES:		<p>THIS DOCUMENT AND INFORMATION CONTAINED IN IT ARE CONFIDENTIAL, AND CANNOT BE COPIED OR DISCLOSED IN WHOLE OR IN PART WITHOUT THE EXPRESS WRITTEN CONSENT OF YASKAWA ELECTRIC AMERICA INC.</p>	DRAWN: J. MATTAS DATE 1-8-09	DATE 1-8-09	TITLE: V1000 DIMENSION DRAWING FRAME SIZE 9 FINLESS HEATSINK 2A0030J, 2A0040J, 4A0018J, 4A0023J	
UNITS: IN [mm]			CHECKED: J. PIOTROWSKI DATE 4-27-09	DATE 4-27-09		SIZE A
SCALE: BY VIEW			TECH: J. CAIRO DATE 7-7-09	DATE 7-7-09		REVISION R00
			APPROVED: T. SASADA DATE 7-8-09	DATE 7-8-09		PAGE 2 of 3
		ORIGINAL DESIGN: -	DATE: -	DRAWING #: DD.V1K.FR9.FNL.01		

MINIMUM INSTALLATION CLEARANCES (SCALE 1:5)



MOUNTING DIMENSIONS (SCALE 1:4)



(4)-MOUNTING HOLES FOR #10[M5] SCREWS

- NOTES:
1. MOUNTING PLATE PROPERTIES
 - FLATNESS SHALL NOT EXCEED 0.2mm
 - ROUGHNESS SHALL NOT EXCEED 25S
 - TEMP. SHALL NOT EXCEED 90C (194F)
 2. APPLY THERMAL COMPOUND BETWEEN HEATSINK AND MOUNTING PLATE.
 3. MOUNTING SCREW TORQUE
 - 2.0-2.5 Nm (1.48-1.84 ft-lbf)
 4. SEE MANUAL FOR COMPLETE DETAILS

TOLERANCES / REFERENCES:		<p>YASKAWA The Drive for Quality™</p> <p>THIS DOCUMENT AND INFORMATION CONTAINED IN IT ARE CONFIDENTIAL, AND CANNOT BE COPIED OR DISCLOSED IN WHOLE OR IN PART WITHOUT THE EXPRESS WRITTEN CONSENT OF YASKAWA ELECTRIC AMERICA INC.</p>	DRAWN: J. MATTAS DATE: 1-8-09	DATE: 1-8-09	TITLE: V1000 DIMENSION DRAWING FRAME SIZE 9 FINLESS HEATSINK 2A0030J, 2A0040J, 4A0018J, 4A0023J
UNITS: IN[mm]	SCALE: BY VIEW		CHECKED: J. PIOTROWSKI DATE: 4-27-09	DATE: 4-27-09	
		APPROVED: T. SASADA DATE: 7-8-09	TECH: J. CAIRO DATE: 7-7-09	DATE: 7-8-09	ORIGINAL DESIGN: -
		DRAWING #: DD.V1K.FR9.FNL.01			SIZE: A REVISION: R00 PAGE: 3 of 3