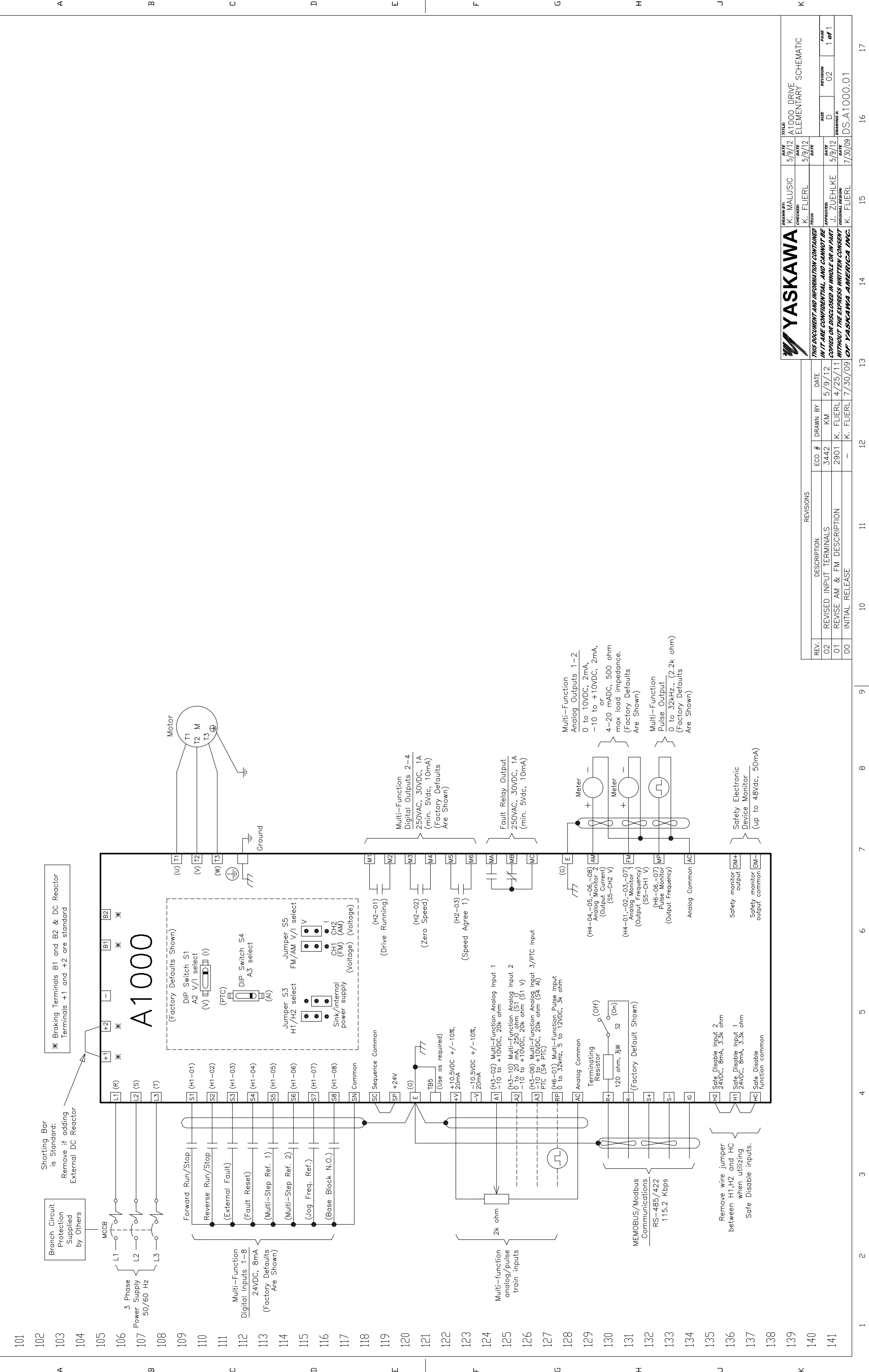


1 2 3 4 5 6 7 8 9 10 11 12 13 14 15 16 17



YASKAWA		THIS DOCUMENT AND INFORMATION CONTAINED IN IT ARE CONFIDENTIAL AND CANNOT BE COPIED OR DISCLOSED IN WHOLE OR IN PART WITHOUT THE EXPRESS WRITTEN CONSENT OF YASKAWA AMERICA, INC.	
DRW BY: K. MALUSIC	DATE: 5/9/12	TITLE: A1000 DRIVE ELEMENTARY SCHEMATIC	SIZE: D
CHECKED: K. FLIERL	DATE: 5/9/12		REVISION: D
TECH:			PAGE: 1 of 1
APPROVED: J. ZUEHLKE	DATE: 5/9/12		DRAWING #: DS-A1000.01
ORIGINAL DESIGN: K. FLIERL	DATE: 7/30/09		

REV.	DESCRIPTION	ECO #	DRAWN BY	DATE
02	REVISED INPUT TERMINALS	3442	KM	5/9/12
01	REVISE AM & FM DESCRIPTION	2901	K. FLIERL	4/25/11
00	INITIAL RELEASE	-	K. FLIERL	7/30/09

REV.	DESCRIPTION	ECO #	DRAWN BY	DATE
02	REVISED INPUT TERMINALS	3442	KM	5/9/12
01	REVISE AM & FM DESCRIPTION	2901	K. FLIERL	4/25/11
00	INITIAL RELEASE	-	K. FLIERL	7/30/09