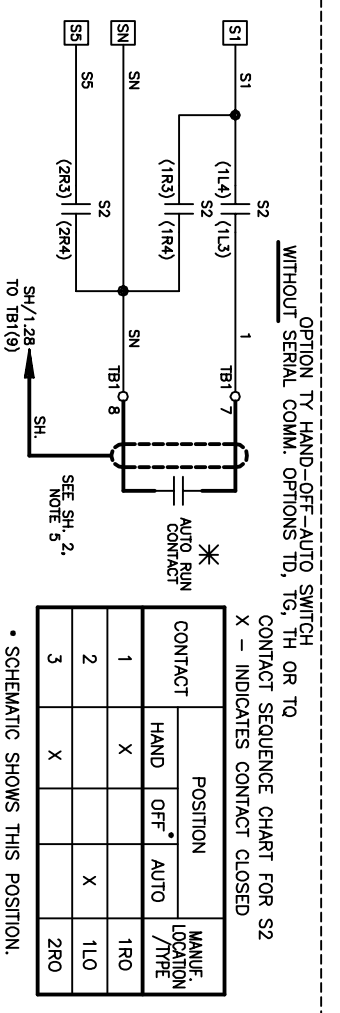
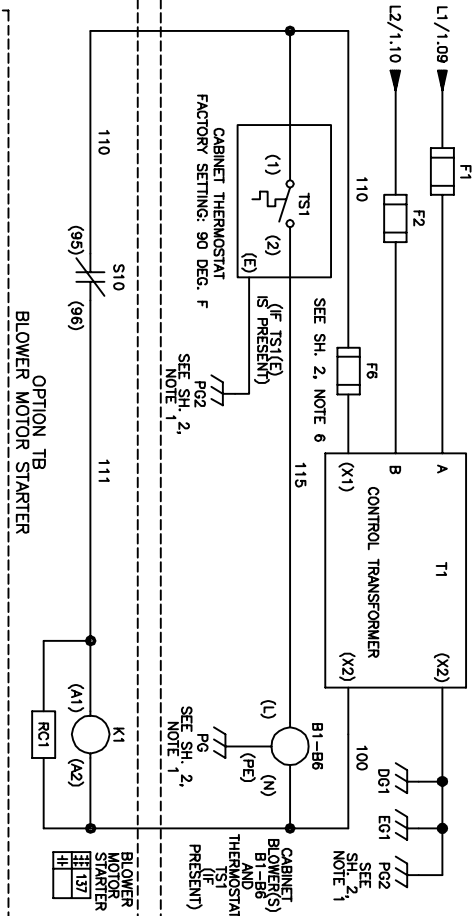


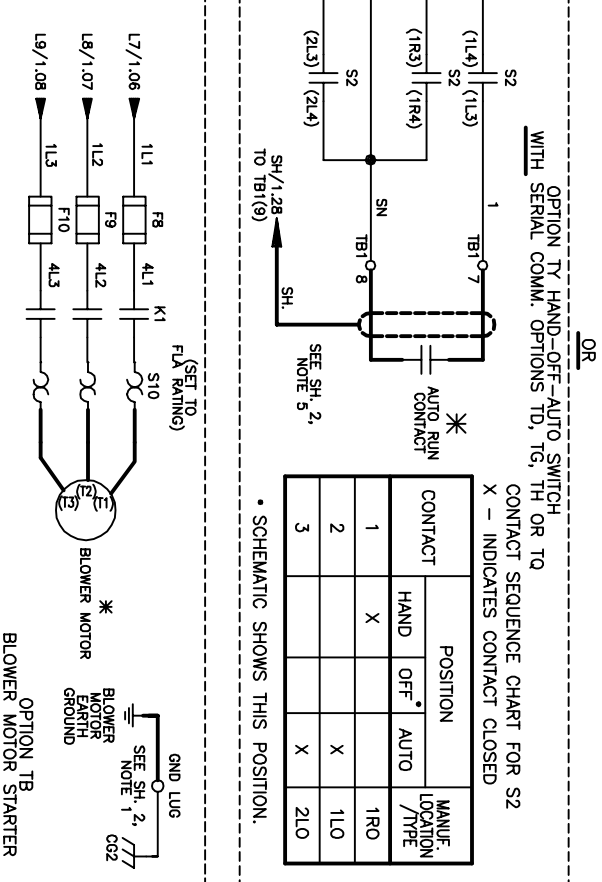
CONTROL TRANSFORMER PRIMARY CONNECTIONS

INPUT VOLTS	TERMINALS	JUMPER LOCATION
230/240	(H1) (H4)	(H1) TO (H3)
460/480	(H1) (H4)	(H2) TO (H4)
600	(H1) (H2)	NONE



BLOWER MOTOR

FLA RATING	FOR A1000 CONFIG.
3.0	2.2 - 360
1.5	1.6 - 477
3.0	515 - 590
1.2	1.3 - 192



REVISIONS

REV.	DESCRIPTION	ECO #	DRAWN BY	DATE
04	ADDED S6 SWITCH ON DRIVE	5564	NSL	8/26/14
05	ADDED FLA, AM, MP TERMINALS TO DRIVE	6421	DJP	07/17/15

YASKAWA

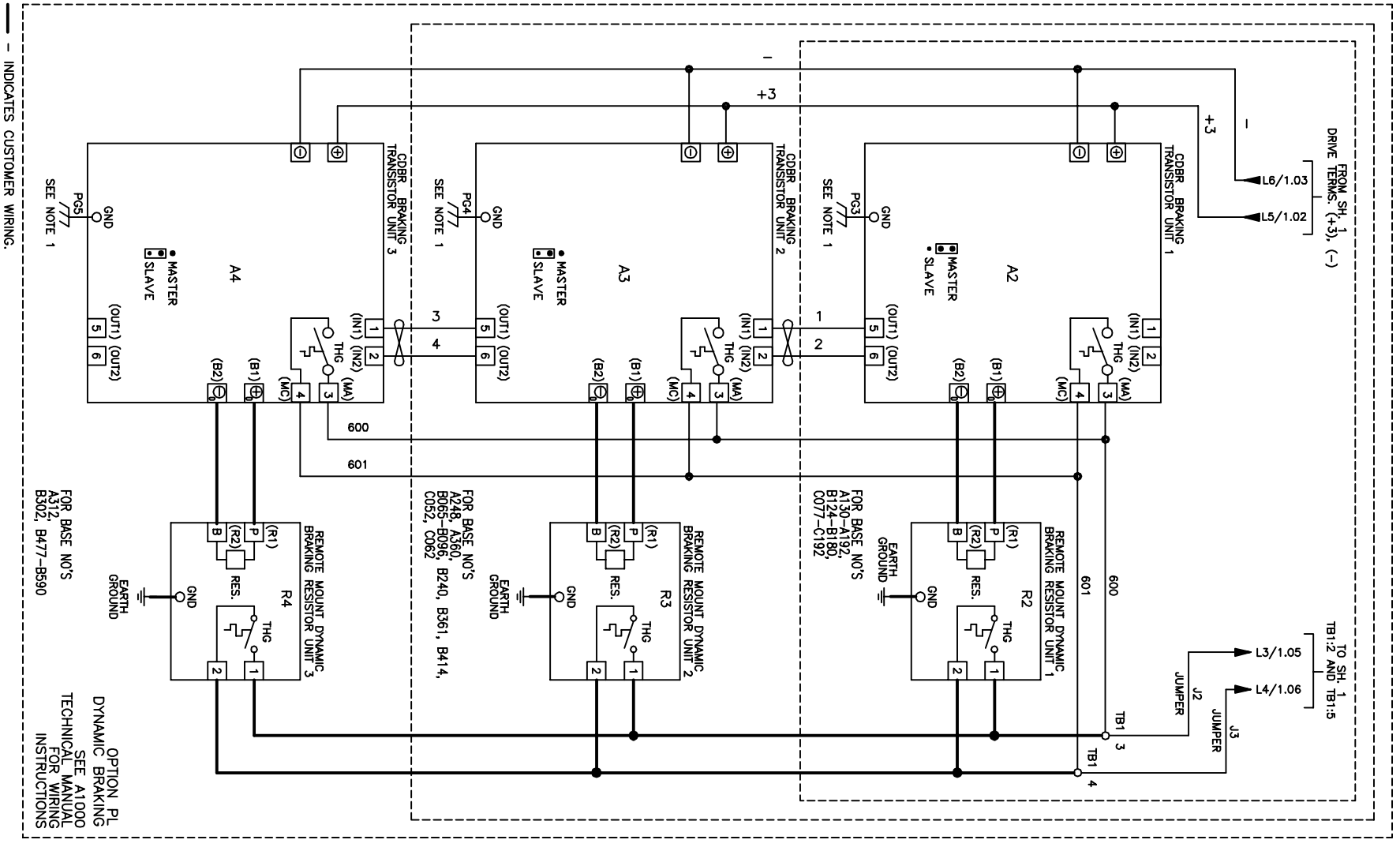
THIS DOCUMENT AND INFORMATION CONTAINED HEREIN IS CONFIDENTIAL AND NOT BE LOANED, REPRODUCED, COPIED OR DISCLOSED IN WHOLE OR IN PART WITHOUT THE EXPRESS WRITTEN CONSENT OF YASKAWA AMERICA INC. © D. PACKER 12/16/11 DS.A1C12.01

DATE: 12/16/11
DRAWN BY: K. MALUSIC
CHECKED BY: K. FLEHER
DATE: 12/16/11
DESIGNED BY: D.R. CMELEK
DATE: 12/16/11
TYPE: 12
SIZE: D
REGION: 05
PAGE: 1 of 2

INDICATES CUSTOMER WIRING.
INDICATES COMPONENTS NOT SUPPLIED BY YASKAWA.

SEE SHEET 2 FOR NOTES.
SEE DRAWING UDE00340 FOR CUSTOMER CONNECTIONS.
SEE DRAWING UDE00337 FOR DRIVE PARAMETER SETTINGS.

- NOTES:
- CONNECTED TO THE CABINET. CUSTOMER TO CONNECT THE CABINET GROUND LUG TO EARTH GROUND.
 - CONDUIT FITTINGS/JUMPS SHALL COMPLY WITH THE STANDARD FOR CONDUIT, TUBING, AND CABLE FITTINGS, UL 514B¹. OR CONDUIT FITTINGS HAVING THE SAME ENVIRONMENTAL RATING AS THE ENCLOSURE SHALL BE USED.
 - WITHOUT THE CIRCUIT BREAKER (OPTION PC OR PE), OR DISCONNECT SWITCH OPTION PD, THE DISCONNECT MEANS MUST BE SUPPLIED BY THE CUSTOMER.
 - BRANCH CIRCUIT PROTECTION TO BE SUPPLIED BY THE CUSTOMER WHEN NOTED ON THE CABINET DATA NAMEPLATE.
 - INSULATED TWISTED SHIELDED WIRE IS REQUIRED. SHIELD TO CONNECT TO PROPER TERMINALS AS SHOWN. CONNECT THE SHIELD ONLY AT THIS END, STUB AND ISOLATE THE OTHER END. DO NOT RUN THESE WIRES IN THE SAME CONDUIT AS THE AC POWER AND AC CONTROL WIRES. KEEP ALL WIRING UNDER 50m IN LENGTH.
 - FOR A CONTROL TRANSFORMER T1 POWER RATING OF 350VA OR GREATER, SECONDARY FUSE F6 IS ADDED.
 - CUSTOMER TO REMOVE JUMPERS J2 AND J3 FOR WIRING TO EXTERNAL CONTROL LOGIC, IF APPLICABLE.
 - IF AC MOTOR IS FURNISHED WITH A N.C. THERMAL SWITCH THEN SET DRIVE PARAMETER HI-08 TO 27. THIS WILL CAUSE THE DRIVE TO COAST TO STOP UPON A AC MOTOR THERMAL FAULT.
 - ALONG WITH THIS, ADD THE FOLLOWING CUSTOMER WIRING:
WIRE THE N.C. THERMAL SWITCH BETWEEN DRIVE TERMINALS S8 AND SN, AS PER NOTE 5 ABOVE.
 - OPTIONS: TD, TG, TH OR TO CONTROL (SEE UDE00337 FOR MORE INFORMATION):
OPTION TD = ETHERNET/IP
OPTION TG = DEVICENET
OPTION TH = PROFIBUS
OPTION TO = ETHERNET MODBUS TCP/IP



YASKAWA		DATE	12/16/11	TITLE	SCHMATIC DIAGRAM
DRAWN BY		K. MALUSIC	DATE	12/16/11	A1000 CONFIGURED
CHECKED		D.R. CMEIAK	DATE	12/16/11	HEAVY DUTY RATING
APPROVED		K. FLIERL	DATE	12/16/11	TYPE 12
ORIGINAL DESIGN		D. PACKER	DATE	12/16/11	SIZE D
DATE		12/16/11	DATE	12/16/11	REVISION 05
DATE		12/16/11	DATE	12/16/11	PAGE 2 of 2
DATE		12/16/11	DATE	12/16/11	DRAWING # DS.A1C12.01

THIS DOCUMENT AND INFORMATION CONTAINED
HEREIN ARE CONFIDENTIAL AND CANNOT BE
COPIED OR DISCLOSED IN WHOLE OR IN PART
WITHOUT THE EXPRESS WRITTEN CONSENT
OF YASKAWA AMERICA INC. D. PACKER