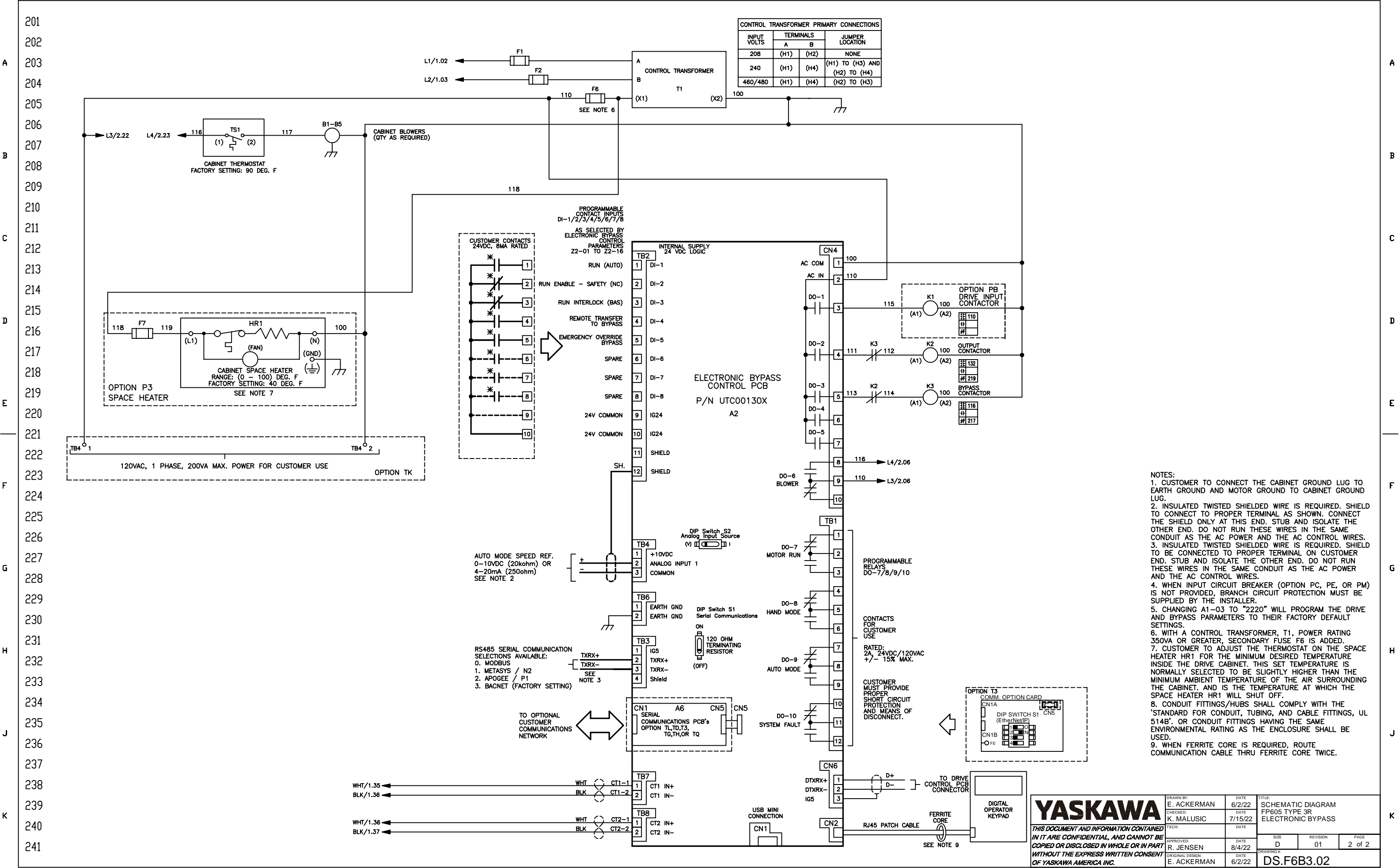


* - INDICATES COMPONENTS NOT SUPPLIED BY YASKAWA.
 - - INDICATES CUSTOMER WIRING.
 ⏏ - CONNECTED TO THE CABINET OR PANEL.
 SEE DRAWING UDE00744 FOR CUSTOMER CONNECTION TABLES.
 SEE DRAWING UDE00748 FOR DRIVE PARAMETER SETTINGS.

REVISIONS				
REV.	DESCRIPTION	ECO #	DRAWN BY	DATE
01	ADD B1P1, UDE00748 REF, A3 JMPR & FERRITE CORE.	12666	RJJ	11/7/2022
00	INITIAL RELEASE	--	EAA	8/4/22

YASKAWA		DRAWN BY: E. ACKERMAN	DATE: 6/2/22	TITLE: SCHEMATIC DIAGRAM FP605 TYPE 3R ELECTRONIC BYPASS
		CHECKED BY: K. MALUSIC	DATE: 7/15/22	
		APPROVED BY: R. JENSEN	DATE: 8/4/22	SIZE: D
		ORIGINAL DESIGNER: E. ACKERMAN	DATE: 6/2/22	REVISION: 01
				PAGE: 1 of 2
				DRAWING #: DS.F6B3.02



YASKAWA

THIS DOCUMENT AND INFORMATION CONTAINED IN IT ARE CONFIDENTIAL, AND CANNOT BE COPIED OR DISCLOSED IN WHOLE OR IN PART WITHOUT THE EXPRESS WRITTEN CONSENT OF YASKAWA AMERICA INC.

DRAWN BY: E. ACKERMAN	DATE: 6/2/22	TITLE: SCHEMATIC DIAGRAM FP605 TYPE 3R ELECTRONIC BYPASS
CHECKED BY: K. MALUSIC	DATE: 7/15/22	SIZE: D
APPROVED BY: R. JENSEN	DATE: 8/4/22	REVISION: 01
ORIGINAL DESIGN: E. ACKERMAN	DATE: 6/2/22	PAGE: 2 of 2

DRAWING #: **DS.F6B3.02**