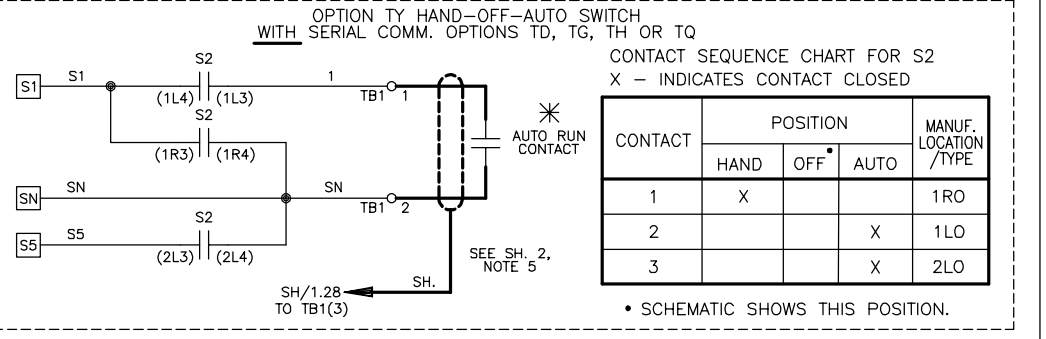
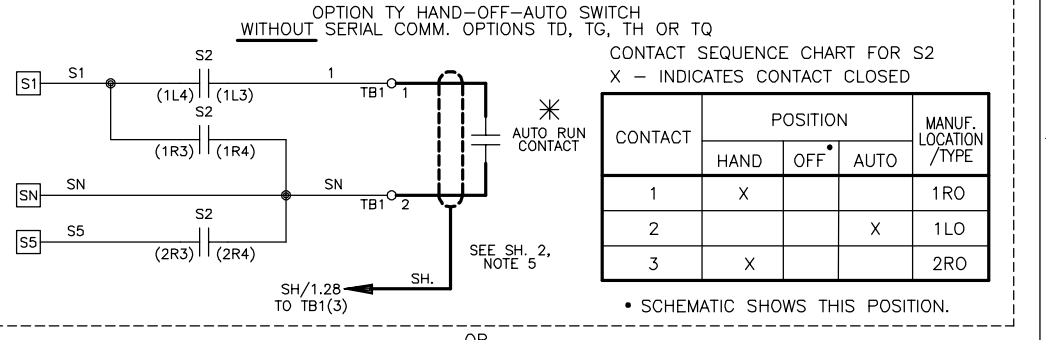
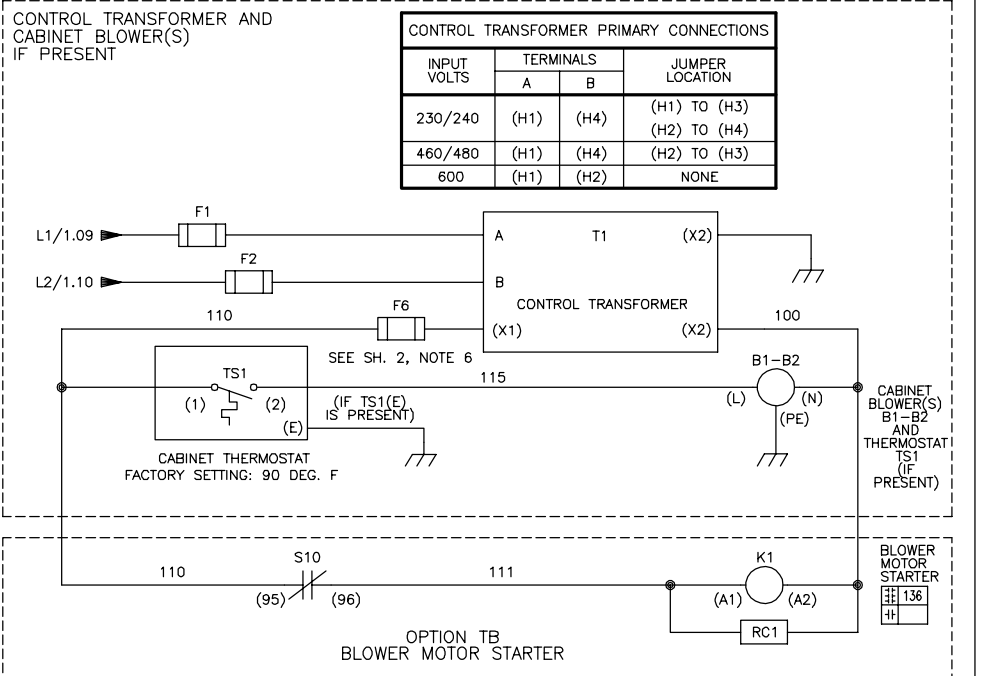


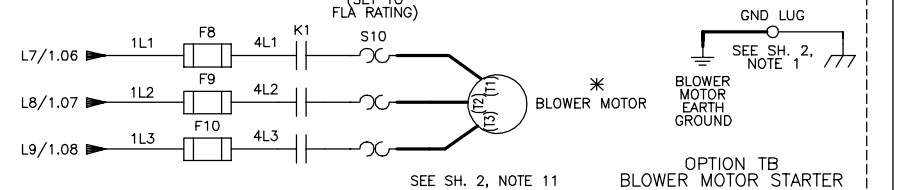
CONTROL TRANSFORMER PRIMARY CONNECTIONS

| INPUT VOLTS | TERMINALS | | JUMPER LOCATION |
|-------------|-----------|------|------------------------------|
| | A | B | |
| 230/240 | (H1) | (H4) | (H1) TO (H3) (H2) TO (H4) |
| 460/480 | (H1) | (H4) | (H2) TO (H3) |
| 600 | (H1) | (H2) | NONE |



BLOWER MOTOR

| FLA RATING | FOR G800 CONFIG. | |
|------------|------------------|-------|
| | AMPS | VOLTS |
| 3.0 | 4.2 - 360 | 240 |
| 1.5 | 2.1 - 477 | 480 |
| 3.0 | 515 - 720 | 480 |



* - INDICATES COMPONENTS NOT SUPPLIED BY YASKAWA.
 - - INDICATES CUSTOMER WIRING.
 --- CONNECTED TO THE CABINET OR PANEL.
 SEE SHEET 2 FOR NOTES.
 SEE DRAWING UDE00598 FOR CUSTOMER CONNECTIONS.
 SEE DRAWING UDE00600 FOR DRIVE PARAMETER SETTINGS.

REVISIONS

| REV. | DESCRIPTION | ECD # | DRAWN BY | DATE |
|------|-------------------------------------|-------|----------|----------|
| 03 | ADDED OPTION TB AND FRAME 11 WIRING | 10925 | KAP | 10/23/20 |
| 02 | ADDED MISSING OPTION BLOCKS | 10868 | KAP | 9/29/20 |

YASKAWA

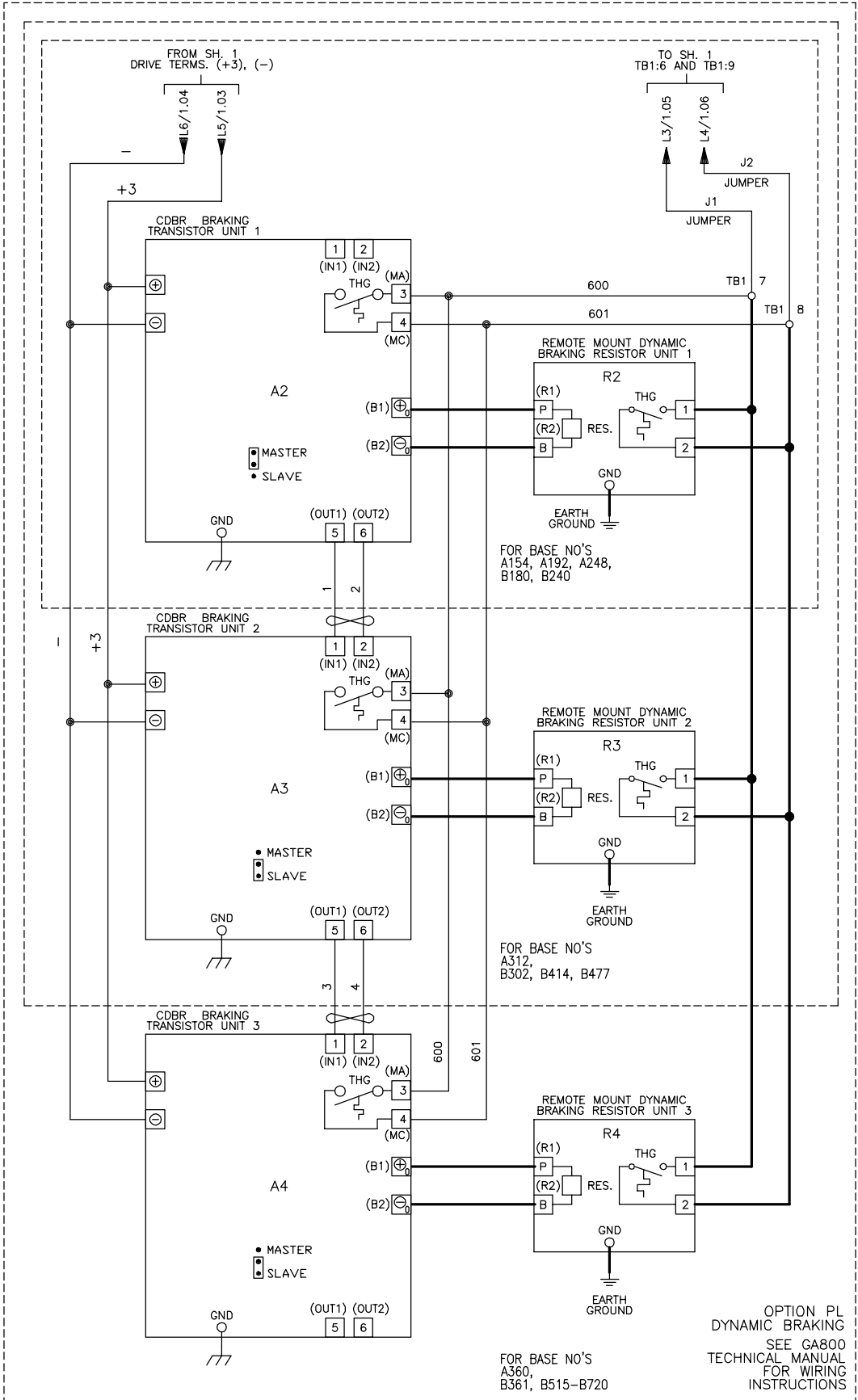
THIS DOCUMENT AND INFORMATION CONTAINED IN IT ARE CONFIDENTIAL, AND CANNOT BE COPIED OR DISCLOSED IN WHOLE OR IN PART WITHOUT THE EXPRESS WRITTEN CONSENT OF YASKAWA AMERICA INC.

| | | |
|-------------------------------|--------------|---|
| DRAWN BY: K. PEOPLES | DATE: 8/3/18 | TITLE: SCHEMATIC DIAGRAM G800 CONFIGURED NORMAL DUTY RATING TYPE 12 |
| CHECKED: N. LAWS | DATE: 8/3/18 | SIZE: D |
| APPROVED: K. FLIERL | DATE: 8/3/18 | REVISION: 03 |
| ORIGINAL DESIGNER: K. PEOPLES | DATE: 8/3/18 | PAGE: 1 of 2 |

DRAWING #: **DS.G8C12.03**

A
B
C
D
E
F
G
H
J
K

201
202
203
204
205
206
207
208
209
210
211
212
213
214
215
216
217
218
219
220
221
222
223
224
225
226
227
228
229
230
231
232
233
234
235
236
237
238
239
240
241



— INDICATES CUSTOMER WIRING.
 — CONNECTED TO THE CABINET OR PANEL.

NOTES:

- CONNECTED TO THE CABINET. CUSTOMER TO CONNECT THE CABINET GROUND LUG TO EARTH GROUND.
- CONDUIT FITTINGS/HUBS SHALL COMPLY WITH THE 'STANDARD FOR CONDUIT, TUBING, AND CABLE FITTINGS, UL 514B', OR CONDUIT FITTINGS HAVING THE SAME ENVIRONMENTAL RATING AS THE ENCLOSURE SHALL BE USED.
- WITHOUT THE CIRCUIT BREAKER (OPTION PC, PE OR PM), OR DISCONNECT SWITCH OPTION PD, THE DISCONNECT MEANS MUST BE SUPPLIED BY THE CUSTOMER.
- BRANCH CIRCUIT PROTECTION TO BE SUPPLIED BY THE CUSTOMER WHEN NOTED ON THE CABINET DATA NAMEPLATE.
- INSULATED TWISTED SHIELDED WIRE IS REQUIRED. SHIELD TO CONNECT TO PROPER TERMINALS AS SHOWN. CONNECT THE SHIELD ONLY AT THIS END. STUB AND ISOLATE THE OTHER END. DO NOT RUN THESE WIRES IN THE SAME CONDUIT AS THE AC POWER AND AC CONTROL WIRES. KEEP ALL WIRING UNDER 50m IN LENGTH.
- FOR A CONTROL TRANSFORMER T1 POWER RATING OF 350VA OR GREATER, SECONDARY FUSE F6 IS ADDED.
- CUSTOMER TO REMOVE JUMPERS J1 AND J2 FOR WIRING TO EXTERNAL CONTROL LOGIC, IF APPLICABLE.
- IF AC MOTOR IS FURNISHED WITH A N.C. THERMAL SWITCH THEN SET DRIVE PARAMETER H1-08 TO 27. THIS WILL CAUSE THE DRIVE TO COAST TO STOP UPON A AC MOTOR THERMAL FAULT. ALONG WITH THIS, ADD THE FOLLOWING CUSTOMER WIRING: WIRE THE N.C. THERMAL SWITCH BETWEEN DRIVE TERMINALS S8 AND SN, AS PER NOTE 5 ABOVE.
- OPTIONS TC, TD, TG, TH OR TQ CONTROL (SEE UDE00600 FOR MORE INFORMATION):
 OPTION TC = PROFINET
 OPTION TD = ETHERNET/IP
 OPTION TG = DEVICENET
 OPTION TH = PROFIBUS
 OPTION TQ = ETHERNET MODBUS TCP/IP
- DRIVE INPUT FUSES F3, F4, F5 ARE INCLUDED WITH OPTION PE, PC, PM, OR PJ FOR BASE NUMBERS B065-B720.
- DRIVE INPUT FUSES F3, F4, F5 ARE INCLUDED WITH OPTION TB FOR BASE NUMBERS A004-A009 AND B002-B007.

| REVISIONS | | | | |
|-----------|-------------------------------------|-------|----------|----------|
| REV. | DESCRIPTION | ECD # | DRAWN BY | DATE |
| 03 | ADDED OPTION TB AND FRAME 11 WIRING | 10925 | KAP | 10/23/20 |
| 02 | ADDED MISSING OPTION BLOCKS | 10868 | KAP | 9/29/20 |

| | | | | | |
|------------------|------------|------------|--------|------------|--|
| YASKAWA | DRAWN BY: | K. PEOPLES | DATE: | 8/3/18 | TITLE: SCHEMATIC DIAGRAM GA800 CONFIGURED NORMAL DUTY RATING TYPE 12 |
| | CHECKED: | N. LAWS | DATE: | 8/3/18 | |
| | TECH: | | DATE: | | |
| APPROVED: | K. FLIERL | DATE: | 8/3/18 | SIZE: | D |
| ORIGINAL DESIGN: | K. PEOPLES | DATE: | 8/3/18 | REVISION: | 03 |
| | | | | PAGE: | 2 of 2 |
| | | | | DRAWING #: | DS.G8C12.03 |