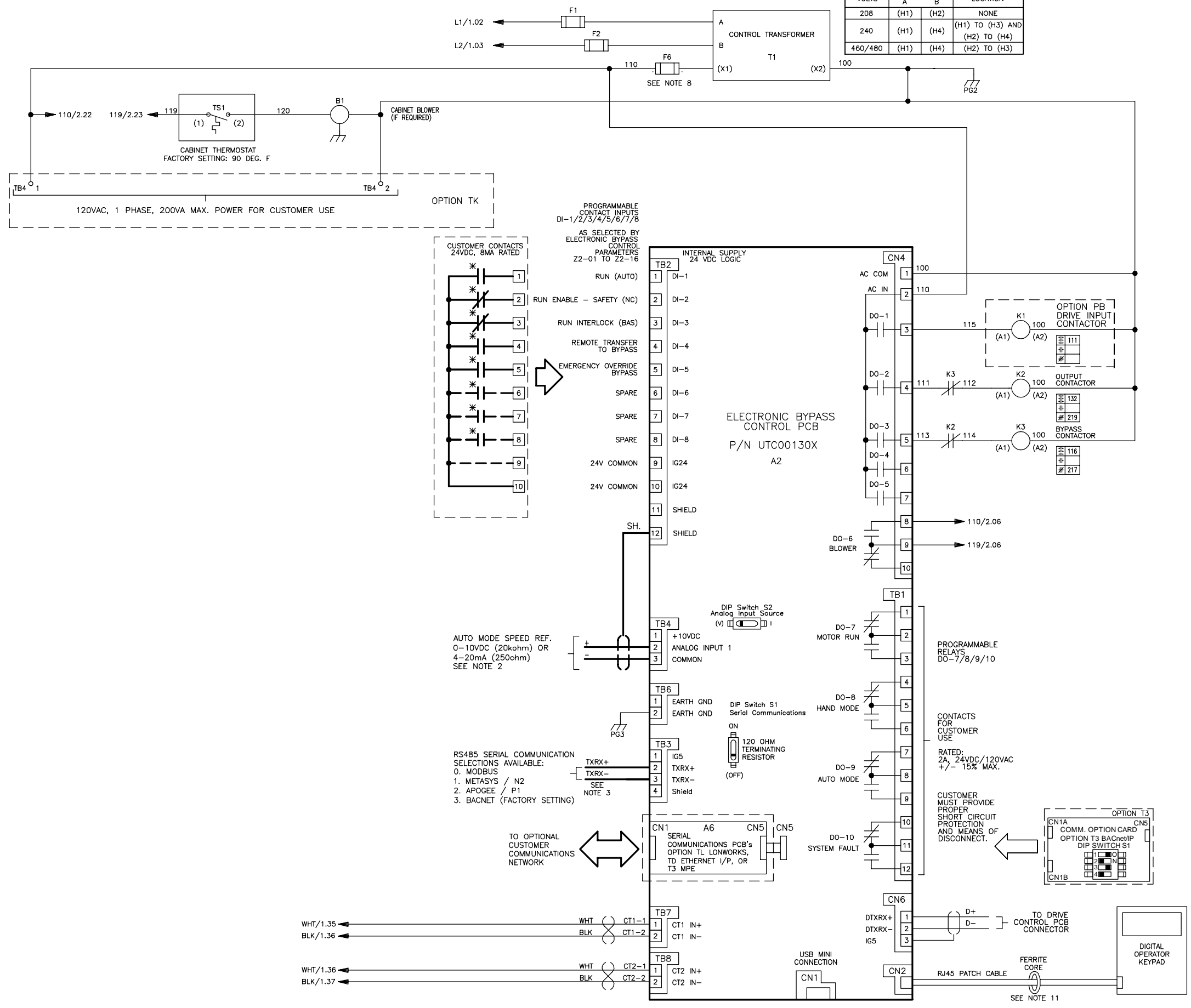


**YASKAWA**

DRAWN BY: K. PEOPLES	DATE 5/11/20	TITLE SCHEMATIC DIAGRAM HV600 TYPE 12 ELECTRONIC BYPASS
CHECKED BY: N. LAWS	DATE 5/11/20	DATE
APPROVED BY: R. JENSEN	DATE 5/13/20	DATE
ORIGINAL DESIGNER: K. PEOPLES	DATE 5/11/20	DATE

SIZE D	REVISION 03	PAGE 1 of 2
DRAWING # DS.H6B2.01		

INPUT VOLTS	TERMINALS		JUMPER LOCATION
	A	B	
208	(H1)	(H2)	NONE
240	(H1)	(H4)	(H1) TO (H3) AND (H2) TO (H4)
460/480	(H1)	(H4)	(H2) TO (H3)



- NOTES:
- CUSTOMER TO CONNECT THE CABINET GROUND LUG TO EARTH GROUND AND MOTOR GROUND TO CABINET GROUND LUG.
  - INSULATED TWISTED SHIELDED WIRE IS REQUIRED. SHIELD TO CONNECT TO PROPER TERMINAL AS SHOWN. CONNECT THE SHIELD ONLY AT THIS END. STUB AND ISOLATE THE OTHER END. DO NOT RUN THESE WIRES IN THE SAME CONDUIT AS THE AC POWER AND THE AC CONTROL WIRES.
  - INSULATED TWISTED SHIELDED WIRE IS REQUIRED. SHIELD TO BE CONNECTED TO PROPER TERMINAL ON CUSTOMER END. STUB AND ISOLATE THE OTHER END. DO NOT RUN THESE WIRES IN THE SAME CONDUIT AS THE AC POWER AND THE AC CONTROL WIRES.
  - WHEN INPUT CIRCUIT BREAKER OPTION PM IS NOT PROVIDED, BRANCH CIRCUIT PROTECTION MUST BE SUPPLIED BY THE INSTALLER.
  - CHANGING A1-03 TO "2220" WILL PROGRAM THE DRIVE AND BYPASS PARAMETERS TO THEIR FACTORY DEFAULT SETTINGS.
  - FOR 208VAC APPLICATIONS, SET E1-01 TO 208 AND SET E1-05 TO 208.
  - FOR SPEED POT OPTION TZ, SET H3-02 TO 2E, L4-05 TO 0, AND S5-01 TO 0.
  - WITH A CONTROL TRANSFORMER, T1, POWER RATING 350VA OR GREATER, SECONDARY FUSE F6 IS ADDED.
  - DRIVE INPUT FUSES F3, F4, F5 ARE INCLUDED WITH OPTION PM FOR BASE NUMBERS B180-B302.
  - CONDUIT FITTINGS/HUBS SHALL COMPLY WITH THE 'STANDARD FOR CONDUIT, TUBING, AND CABLE FITTINGS, UL 514B'. OR CONDUIT FITTINGS HAVING THE SAME ENVIRONMENTAL RATING AS THE ENCLOSURE SHALL BE USED.
  - ROUTE COMMUNICATION CABLE THROUGH FERRITE CORE TWICE.

<b>YASKAWA</b> <small>THIS DOCUMENT AND INFORMATION CONTAINED IN IT ARE CONFIDENTIAL, AND CANNOT BE COPIED OR DISCLOSED IN WHOLE OR IN PART WITHOUT THE EXPRESS WRITTEN CONSENT OF YASKAWA AMERICA INC.</small>	DRAWN BY: K. PEOPLES	DATE: 5/11/20	TITLE: SCHEMATIC DIAGRAM HV600 TYPE 12 ELECTRONIC BYPASS
	CHECKED: N. LAWS	DATE: 5/11/20	SIZE: D
	APPROVED: R. JENSEN	DATE: 5/13/20	REVISION: 03
	ORIGINAL DESIGN: K. PEOPLES	DATE: 5/11/20	PAGE: 2 of 2

DRAWING #: DS.H6B2.01