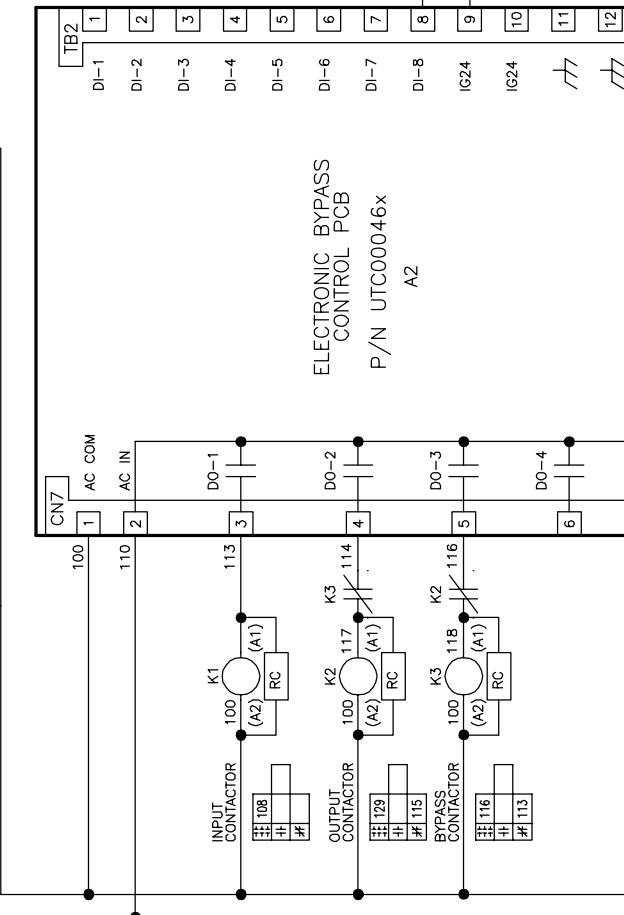


CONTROL TRANSFORMER PRIMARY CONNECTIONS		
INPUT VOLTS	TERMINALS	JUMPER LOCATION
208	A (H1)	B (H2)
460/480	(H1) (H4)	(H2) TO (H3)

PROGRAMMABLE CONTACT INPUTS  
DI-1/2/3/4/5/6/7/8



ELECTRONIC BYPASS CONTROL PCB  
P/N UTC00046x  
A2

PROGRAMMABLE RELAYS  
DO-7/8/9/10

AS SELECTED BY ELECTRONIC BYPASS CONTROL PCB PARAMETERS Z2-23 TO Z2-26

CONTACTS FOR CUSTOMER USE

RATED:  
2A, 24VDC/120VAC  
+/- 15% MAX.

RS485 SERIAL COMMUNICATION SELECTIONS AVAILABLE:  
1. MODBUS  
2. N2 / METASYS  
3. FLN / APOGEE  
4. BACNET (FACTORY SETTING)

- NOTES:
1. CUSTOMER TO CONNECT THE CABINET GROUND LUG TO EARTH GROUND.
  2. INSULATED TWISTED SHIELDED WIRE IS REQUIRED. SHIELD TO CONNECT TO PROPER TERMINAL AS SHOWN. CONNECT THE SHIELD ONLY AT THIS END. STUB AND ISOLATE THE OTHER END. DO NOT RUN THESE WIRES IN THE SAME CONDUIT AS THE AC POWER AND THE AC CONTROL WIRES.
  3. WITH A CONTROL TRANSFORMER, T1, POWER RATING 350VA OR GREATER, SECONDARY FUSE F6 IS ADDED.
  4. CHANGING Z1-01 TO "1" WILL PROGRAM THE DRIVE AND BYPASS PARAMETERS TO THEIR FACTORY DEFAULT SETTINGS.
  5. FOR 208VAC APPLICATIONS, SET E1-01 TO 208 AND SET E1-05 TO 208.
  6. THE MOTOR OVERLOAD RELAYS ARE FACTORY SET FOR MANUAL RESET. CUSTOMER TO ADJUST THE MOTOR OVERLOAD RELAYS TRIP SETTINGS FOR THE ACTUAL AC MOTOR'S FULL LOAD AMPS.
  7. CONDUIT FITTINGS/HUBS SHALL COMPLY WITH THE 'STANDARD FOR CONDUIT, TUBING, AND CABLE FITTINGS, UL 514B', OR CONDUIT FITTINGS HAVING THE SAME ENVIRONMENTAL RATING AS THE ENCLOSURE SHALL BE USED.

REV.	DESCRIPTION	ECO #	DRAWN BY	DATE
00	INITIAL RELEASE	-	D. CMELAK	11/12/13

**YASKAWA**  
THIS DOCUMENT AND INFORMATION CONTAINED HEREIN IS CONFIDENTIAL AND CANNOT BE REPRODUCED OR DISCLOSED IN WHOLE OR IN PART WITHOUT THE EXPRESS WRITTEN CONSENT OF YASKAWA AMERICA INC.

DATE	TITLE	REVISION #	SIZE	PAGE
11/12/13	SCHEMATIC DIAGRAM	D	00	1 of 1
11/12/13	P1000 ELECTRONIC BYPASS OPTION PA	D	00	1 of 1

\* - INDICATES COMPONENTS NOT SUPPLIED BY YASKAWA.  
- - - INDICATES CUSTOMER WIRING.  
/// - CONNECTED TO THE CABINET OR PANEL.

A.C. MOTOR #1 \*  
A.C. MOTOR #2 \*