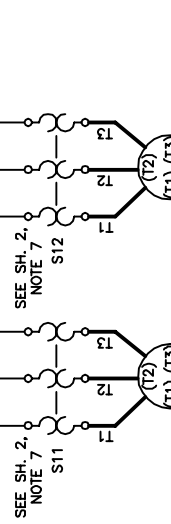
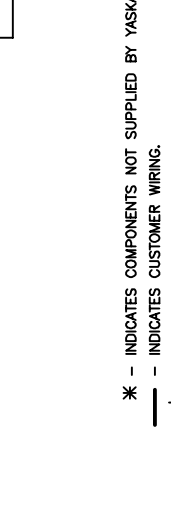
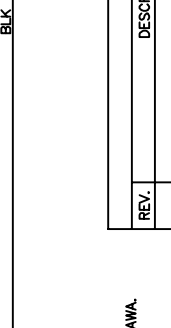
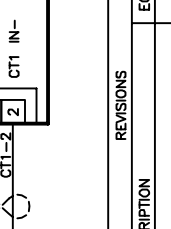
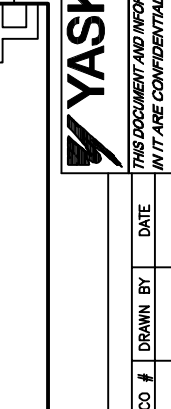
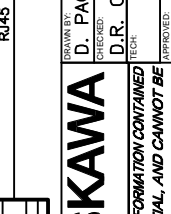
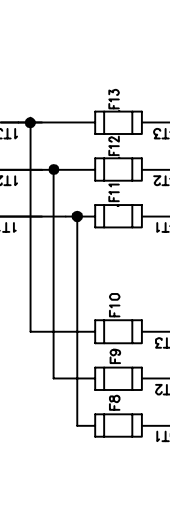
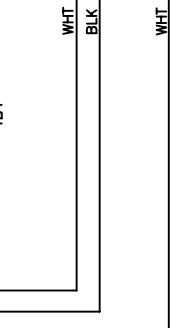
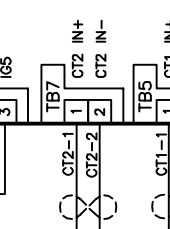
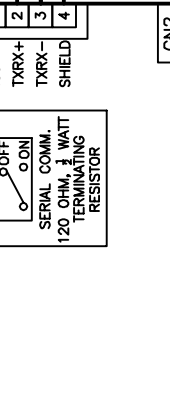
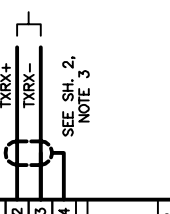
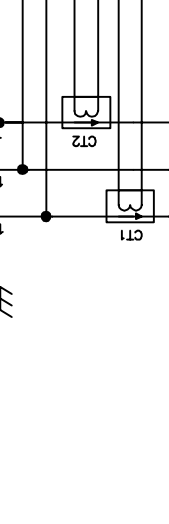
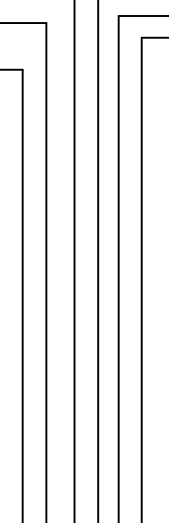
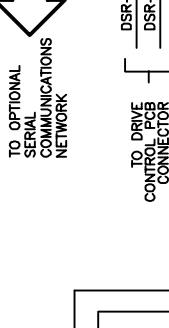
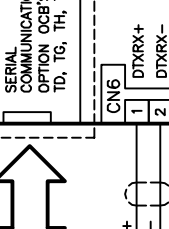
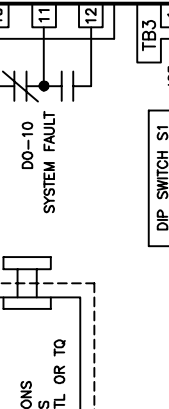
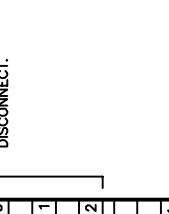
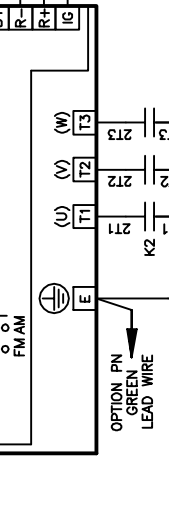
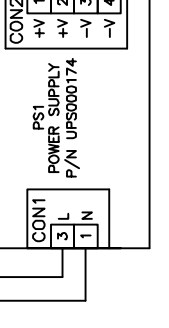
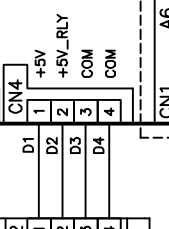
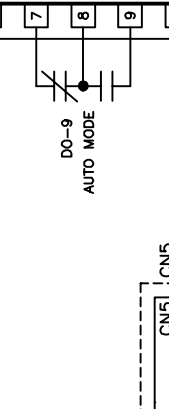
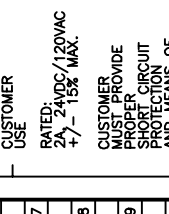
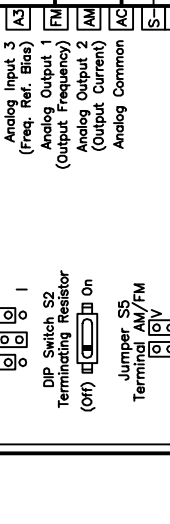
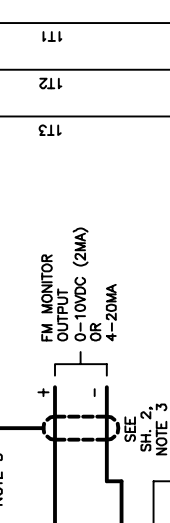
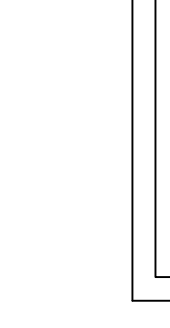
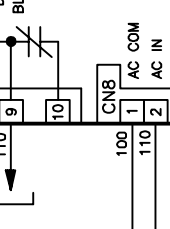
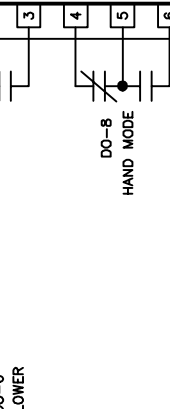
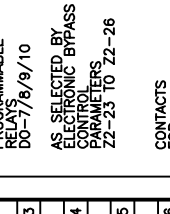
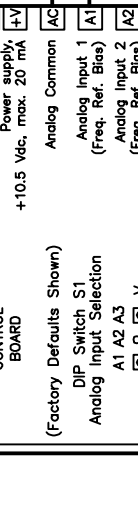
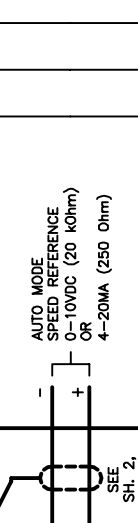
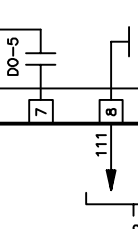
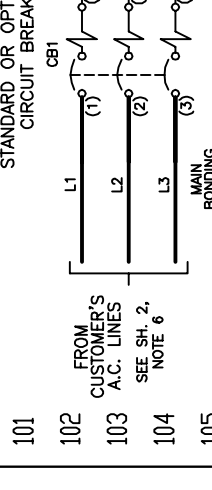
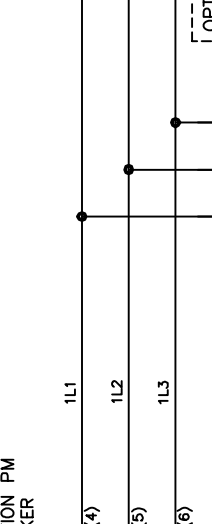
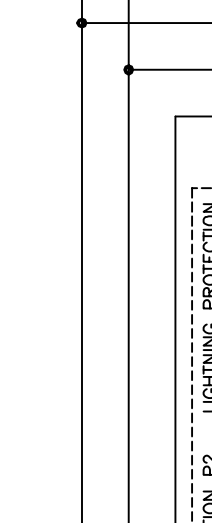
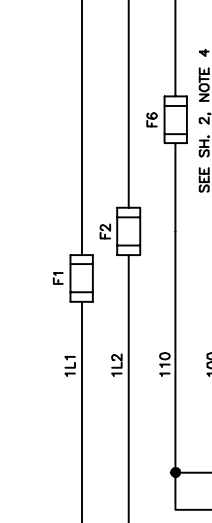
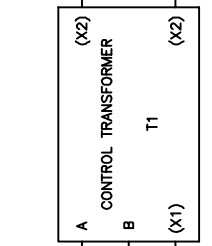
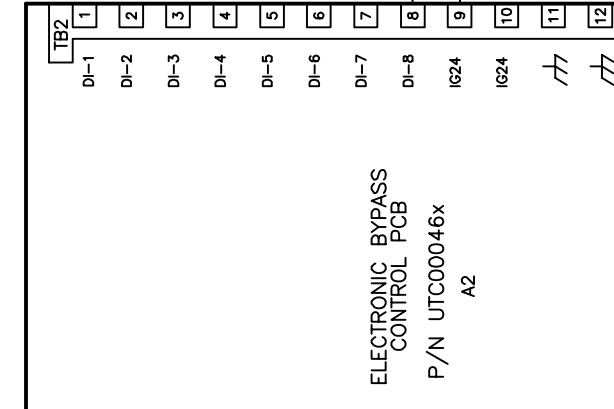
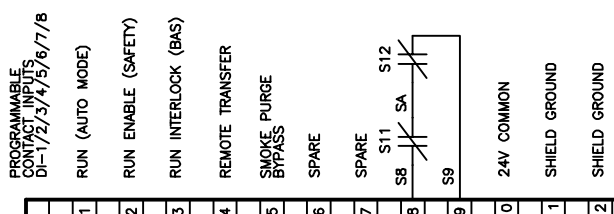
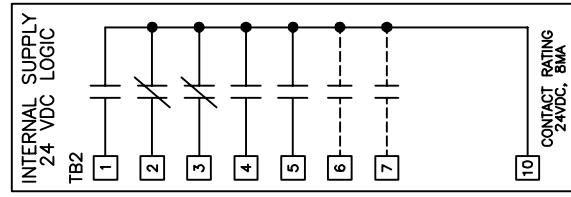


CONTROL TRANSFORMER PRIMARY CONNECTIONS

INPUT VOLTS	TERMINALS	JUMPER LOCATION
208	(H1)	(H2)
460/480	(H1)	(H4) (H2) TO (H3)



YASKAWA

DATE: 2/22/14
 DRAWN BY: D. PACKER
 CHECKED BY: D.R. CMELAK
 TITLE: SCHEMATIC DIAGRAM P1000 ELECTRONIC BYPASS OPTION PA

DATE: 2/24/14
 DRAWN BY: K. FLIERL
 CHECKED BY: D. PACKER
 TITLE: SCHEMATIC DIAGRAM P1000 ELECTRONIC BYPASS OPTION PA

DATE: 2/24/14
 DRAWN BY: K. FLIERL
 CHECKED BY: D. PACKER
 TITLE: SCHEMATIC DIAGRAM P1000 ELECTRONIC BYPASS OPTION PA

DATE: 2/22/14
 DRAWN BY: D. PACKER
 CHECKED BY: D. PACKER
 TITLE: SCHEMATIC DIAGRAM P1000 ELECTRONIC BYPASS OPTION PA

REVISIONS

REV.	DESCRIPTION	ECO #	DRAWN BY	DATE
00	INITIAL RELEASE	-	D. PACKER	2/22/14

* - INDICATES COMPONENTS NOT SUPPLIED BY YASKAWA.
 --- - INDICATES CUSTOMER WIRING.
 // - CONNECTED TO THE CABINET OR PANEL.
 SEE SHEET 2 FOR NOTES.

HOA OPERATOR
 PART NUMBER
 JWOP-183

RS485 SERIAL COMMUNICATION SELECTIONS AVAILABLE:
 1. MODBUS
 2. N2 / METASYS
 3. FLN / APOGEE
 4. BACNET (FACTORY SETTING)

DIP SWITCH S1
 SERIAL COMM. TERMINATING RESISTOR
 120 OHM, 1/4 WATT

TO SERIAL COMMUNICATIONS NETWORK

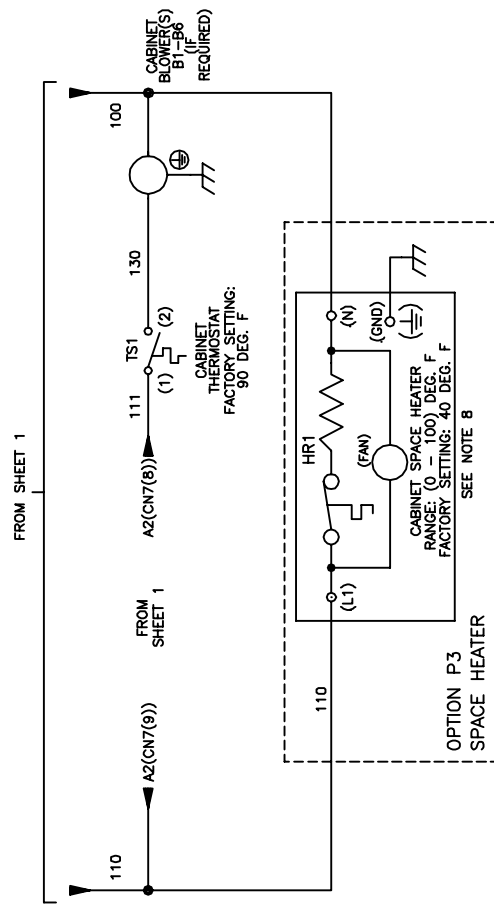
TO DRIVE CONTROL PCB CONNECTOR TB4

TO ELECTRONIC BYPASS CONTROL PCB CONNECTOR CN6

TO DRIVE GREEN LEAD WIRE

NOTES:

1. CUSTOMER TO CONNECT THE CABINET GROUND LUGS TO EARTH GROUND AND UTILITY GROUND.
2. CONDUIT FITTINGS/HUBS SHALL COMPLY WITH THE 'STANDARD FOR CONDUIT, TUBING, AND CABLE FITTINGS, UL 514B'. OR CONDUIT FITTINGS HAVING THE SAME ENVIRONMENTAL RATING AS THE ENCLOSURE SHALL BE USED.
3. INSULATED TWISTED SHIELDED WIRE IS REQUIRED. SHIELD TO CONNECT TO PROPER TERMINAL AS SHOWN. CONNECT THE SHIELD ONLY AT THIS END. STUB AND ISOLATE THE OTHER END. DO NOT RUN THESE WIRES IN THE SAME CONDUIT AS THE AC POWER AND THE AC CONTROL WIRES.
4. WITH A CONTROL TRANSFORMER, T1, POWER RATING 350VA OR GREATER, SECONDARY FUSE F6 IS ADDED.
5. CHANGING Z1-01 TO "1" WILL PROGRAM THE DRIVE AND BYPASS PARAMETERS TO THEIR FACTORY DEFAULT SETTINGS.
6. FOR 208VAC APPLICATIONS, SET E1-01 TO 208, AND SET E1-05 TO 208.
7. THE MOTOR OVERLOAD RELAYS ARE FACTORY SET FOR MANUAL RESET. CUSTOMER TO ADJUST THE MOTOR OVERLOAD RELAYS TRIP SETTINGS FOR THE ACTUAL AC MOTOR'S FULL LOAD AMPS.
8. CUSTOMER TO ADJUST THE THERMOSTAT ON THE SPACE HEATER HR1 FOR THE MINIMUM DESIRED TEMPERATURE INSIDE THE DRIVE CABINET. THIS SET TEMPERATURE IS NORMALLY SELECTED TO BE SLIGHTLY HIGHER THAN THE MINIMUM AMBIENT TEMPERATURE OF THE AIR SURROUNDING THE CABINET. AND IS THE TEMPERATURE AT WHICH THE SPACE HEATER HR1 WILL SHUT OFF.



DRAWN BY D. PACKER	DATE 2/22/14	TITLE SCHEMATIC DIAGRAM
DESIGNED BY D.R. CMELAK	DATE 2/24/14	P1000 ELECTRONIC BYPASS
TECH K. FLIERL	DATE 2/24/14	2-MTR AND OPTION PA
REVISION #	SIZE	PAGE
D. PACKER	D	2 of 2
2/22/14	DS.P1B.3R.05	

THIS DOCUMENT AND INFORMATION CONTAINED IN IT ARE CONFIDENTIAL AND CANNOT BE COPIED OR DISCLOSED IN WHOLE OR IN PART WITHOUT THE EXPRESS WRITTEN CONSENT OF YASKAWA AMERICA INC.