

NOTES:

- CONNECTED TO THE CABINET. CUSTOMER TO CONNECT THE CABINET GROUND LUGS TO EARTH GROUND AND UTILITY GROUND.
- CONDUIT FITTINGS/HUBS SHALL COMPLY WITH THE "STANDARD FOR CONDUIT, TUBING, AND CABLE FITTINGS, UL 514B" OR CONDUIT FITTINGS HAVING THE SAME ENVIRONMENTAL RATING AS THE ENCLOSURE SHALL BE USED.
- LIGHTNING PROTECTION OPTION P2 IS TO BE INSTALLED ON THE VOLTAGE TAP OFFS AT THE BREAKER IF REQUIRED.
- BRANCH CIRCUIT PROTECTION TO BE SUPPLIED BY THE CUSTOMER WHEN NOTED ON THE CABINET DATA NAMEPLATE.
- INSULATED TWISTED SHIELDED WIRE IS REQUIRED. SHIELD TO CONNECT TO PROPER TERMINALS AS SHOWN. CONNECT THE SHIELD ONLY AT THIS END. STUB AND ISOLATE THE OTHER END. DO NOT RUN THESE WIRES IN THE SAME CONDUIT AS THE AC POWER AND AC CONTROL WIRES. KEEP ALL WIRING UNDER 50m IN LENGTH.
- CUSTOMER TO ADJUST THE THERMOSTAT ON THE SPACE HEATER H1 FOR THE MINIMUM DESIRED TEMPERATURE INSIDE THE DRIVE CABINET. THIS SET TEMPERATURE IS NORMALLY SELECTED TO BE SLIGHTLY HIGHER THAN THE MINIMUM AMBIENT TEMPERATURE OF THE AIR SURROUNDING THE CABINET, AND IS THE TEMPERATURE AT WHICH THE HEATER H1 WILL SHUT OFF.
- FOR A CONTROL TRANSFORMER T1 POWER RATING OF 350VA OR GREATER, SECONDARY FUSE F6 IS ADDED.
- IF AC MOTOR IS FURNISHED WITH A N.C. THERMAL SWITCH THEN SET DRIVE PARAMETER H1-08 TO 27. THIS WILL CAUSE THE DRIVE TO COAST TO STOP UPON AN AC MOTOR THERMAL FAULT.
- ALONG WITH THIS, ADD THE FOLLOWING CUSTOMER WIRING:
- OPTIONS TD, TG, TH, TT, TU, OR TV CONTROL (SEE UDE00453 FOR MORE INFORMATION)
- CUSTOMER TO REPLACE THE JUMPER WITH NORMALLY CLOSED SAFETY INTERLOCKS, IF APPLICABLE.

\* - INDICATES COMPONENTS NOT SUPPLIED BY YASKAWA.

SEE DRAWING UDE00451 FOR CUSTOMER CONNECTION TABLES.

SEE DRAWING UDE00453 FOR DRIVE PARAMETER SETTINGS.

REV.	DESCRIPTION	ECO #	DRAWN BY	DATE
02	ADD MISSING REF NUMBERS 201-241 ON PAGE 2	6330	DJP	6/12/15
01	CORRECTED CONTACT LOCATION REFERENCE	5186	NSL	4/01/14
00	INITIAL RELEASE	-	NSL	1/30/14

DATE	BY	DESCRIPTION
1/30/14	N. LAWS	DESIGNED
1/30/14	D. PACKER	CHECKED
1/30/14	K. FLIERL	APPROVED
1/30/14	D. PACKER	DESIGNED
1/30/14	D. PACKER	CHECKED
1/30/14	D. PACKER	APPROVED

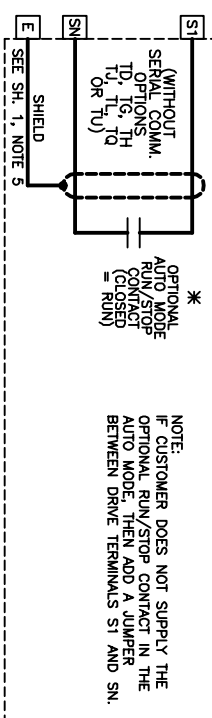
DATE	BY	DESCRIPTION
1/30/14	D. PACKER	DESIGNED
1/30/14	D. PACKER	CHECKED
1/30/14	D. PACKER	APPROVED

**YASKAWA**

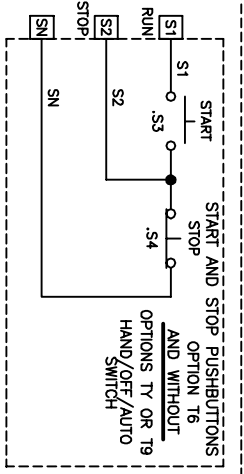
SCHEMATIC DIAGRAM  
IQPUMP1000 CONFIGURED  
TYPE 3R  
IMPEDANCE READY

DATE: 1/30/14  
DRAWING #: DS-Q1C3R.20

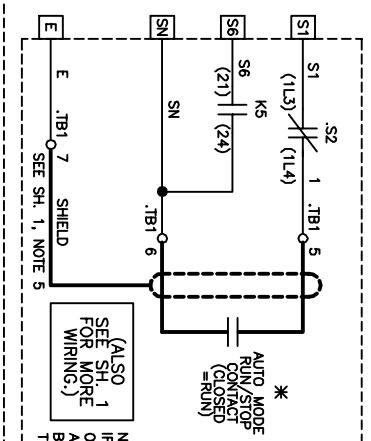
RUN/STOP CONTROL (FROM SHEET 1)



\* NOTE: IF CUSTOMER DOES NOT SUPPLY THE OPTIONAL RUN/STOP CONTACT IN THE AUTO MODE, THEN ADD A JUMPER BETWEEN DRIVE TERMINALS S1 AND SN.



OR



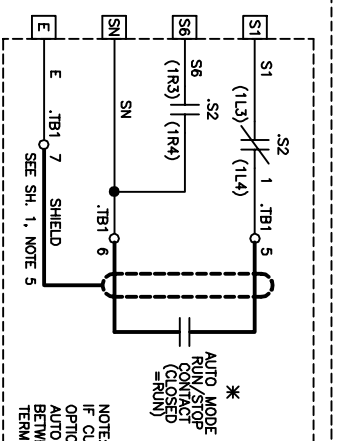
\* NOTE: IF CUSTOMER DOES NOT SUPPLY THE OPTIONAL RUN/STOP CONTACT IN THE AUTO MODE, THEN ADD A JUMPER BETWEEN TERMINALS 5 AND 6.

OPTION T6  
START AND STOP PUSHBUTTONS  
AND WITH  
OPTION TY, OR PART OF OPTION T9  
HAND/OFF/AUTO SWITCH

CONTACT SEQUENCE CHART FOR S2  
X - INDICATES CONTACT CLOSED

CONTACT	POSITION		MANUF. LOCATION /TYPE
	HAND	AUTO*	
1	X		1R0
2		X	1L0

\* SCHEMATIC SHOWS THIS POSITION.



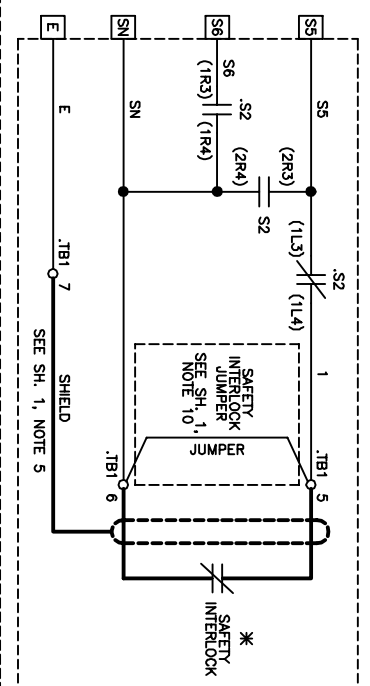
\* NOTE: IF CUSTOMER DOES NOT SUPPLY THE OPTIONAL RUN/STOP CONTACT IN THE AUTO MODE, THEN ADD A JUMPER BETWEEN TERMINAL BLOCK TB1 TERMINALS 5 AND 6.

OPTION TY, OR PART OF OPTION T9  
HAND/OFF/AUTO SWITCH  
AND WITHOUT  
OPTIONS TD, TG, TH, TJ, TL, TQ OR TU  
SERIAL COMMUNICATIONS

CONTACT SEQUENCE CHART FOR S2  
X - INDICATES CONTACT CLOSED

CONTACT	POSITION		MANUF. LOCATION /TYPE
	HAND	AUTO*	
1	X		1R0
2		X	1L0

\* SCHEMATIC SHOWS THIS POSITION.



\* SAFETY INTERLOCK JUMPER SEE SH. 1, NOTE 10

OPTION TY, OR PART OF OPTION T9  
HAND/OFF/AUTO SWITCH  
AND WITH  
OPTIONS TD, TG, TH, TJ, TL, TQ OR TU  
SERIAL COMMUNICATIONS

CONTACT SEQUENCE CHART FOR S2  
X - INDICATES CONTACT CLOSED

CONTACT	POSITION		MANUF. LOCATION /TYPE
	HAND	AUTO*	
1	X		1R0
2		X	1L0
3	X		2R0

\* SCHEMATIC SHOWS THIS POSITION.

SEE SHEET 1 FOR NOTES.

<b>YASKAWA</b>		DRAWN BY: N. LAWS	DATE: 1/30/14	TITLE: SCHEMATIC DIAGRAM
CHECKED: D. PACKER		DATE: 1/30/14	TYPE: 3R	IMPEDANCE READY
APPROVED: K. FLIERL		DATE: 1/31/14	SIZE: D	REVISION: 02
ORIGINAL DESIGNER: N. LAWS		DATE: 1/30/14	DRAWING #:	DS-Q1C3R.20

THIS DOCUMENT AND INFORMATION CONTAINED HEREIN ARE CONFIDENTIAL AND CANNOT BE COPIED OR DISCLOSED IN WHOLE OR IN PART WITHOUT THE EXPRESS WRITTEN CONSENT OF YASKAWA AMERICA INC. N. LAWS