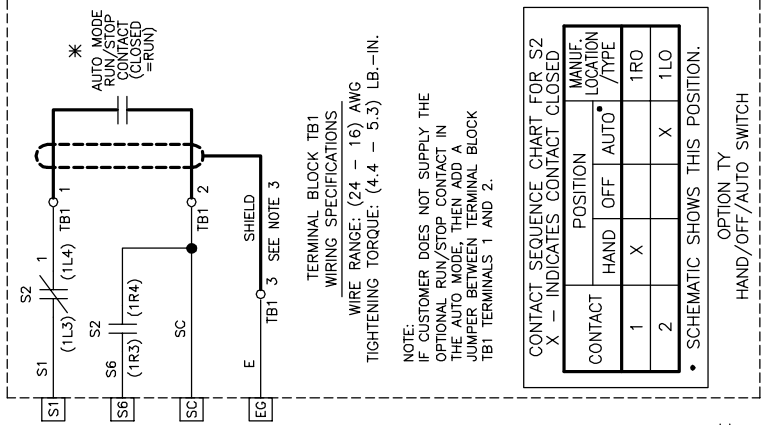
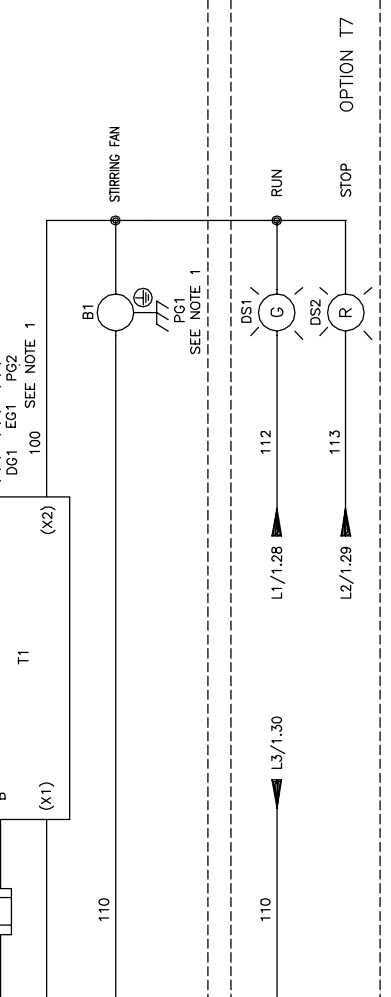


CONTROL TRANSFORMER PRIMARY CONNECTIONS

INPUT VOLTS	TERMINALS	JUMPER LOCATION
230/240	(H1)	(H1) TO (H3)
460/480	(H1)	(H2) TO (H4)



NOTES:

- CONNECTED TO THE CABINET. CUSTOMER TO CONNECT THE CABINET GROUND LUGS TO EARTH GROUND AND UTILITY GROUND.
- CONDUIT FITTINGS/HUBS SHALL COMPLY WITH THE 'STANDARD FOR CONDUIT, TUBING, AND CABLE FITTINGS, UL 514B' OR CONDUIT FITTINGS HAVING THE SAME ENVIRONMENTAL RATING AS THE ENCLOSURE SHALL BE USED.
- INSULATED TWISTED SHIELDED WIRE IS REQUIRED. SHIELD TO CONNECT TO PROPER TERMINALS AS SHOWN. CONNECT THE SHIELD ONLY AT THIS END. STUB AND ISOLATE THE OTHER END. DO NOT RUN THESE WIRES IN THE SAME CONDUIT AS THE AC POWER AND AC CONTROL WIRES. KEEP ALL WIRING UNDER 50m (164 FEET) IN LENGTH.
- REMOVE THE H1 TO HC JUMPER WHEN USING THE SAFE DISABLE INPUT. THE WIRE LENGTH SHOULD NOT EXCEED 30m (98 FEET).

SEE DRAWING UDE00465 FOR CUSTOMER CONNECTION TABLES.
SEE DRAWING UDE00466 FOR DRIVE PARAMETER SETTINGS.

REVISIONS

REV.	DESCRIPTION	ECO #	DRAWN BY	DATE
00	INITIAL RELEASE	-	DRC	11/4/14

YASKAWA

THIS DOCUMENT AND INFORMATION CONTAINED HEREIN IS CONFIDENTIAL AND CANNOT BE COPIED OR DISCLOSED IN WHOLE OR IN PART WITHOUT THE EXPRESS WRITTEN CONSENT OF YASKAWA AMERICA, INC.

SCHEMATIC DIAGRAM

DATE	DATE	DATE	DATE	DATE
11/4/14	11/4/14	11/4/14	11/4/14	11/4/14

DRAWN BY: D.R. CMELAK
CHECKED BY: D. PACKER
DESIGNED BY: K. FLIERL
DATE: 11/4/14
DRAWING #: DS-Q1M.3R.01