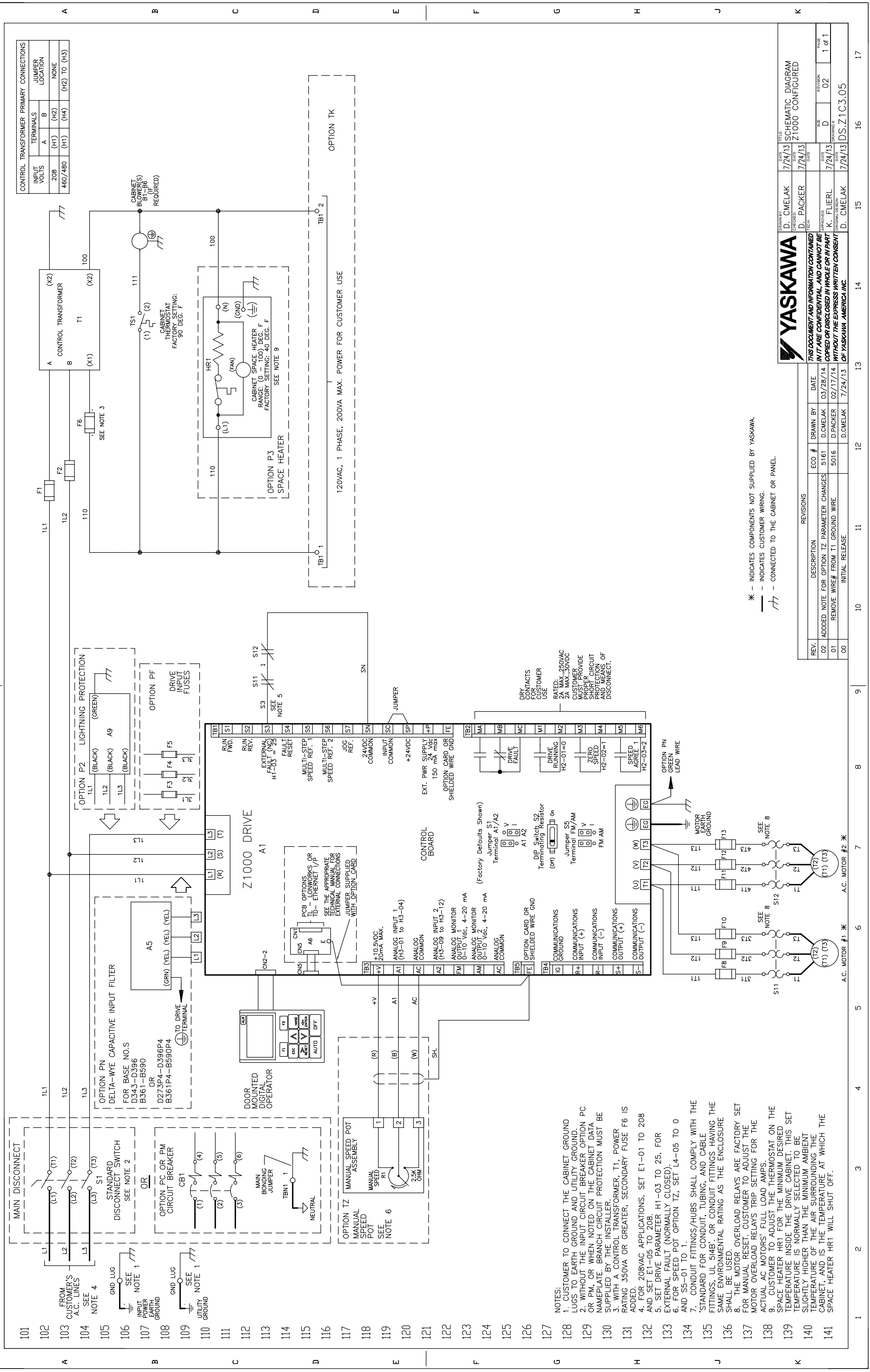


101  
102  
103  
104  
105  
106  
107  
108  
109  
110  
111  
112  
113  
114  
115  
116  
117  
118  
119  
120  
121  
122  
123  
124  
125  
126  
127  
128  
129  
130  
131  
132  
133  
134  
135  
136  
137  
138  
139  
140  
141



A  
B  
C  
D  
E  
F  
G  
H  
J  
K

CONTROL TRANSFORMER PRIMARY CONNECTIONS			
INPUT VOLTS	TERMINALS	JUMPER LOCATION	
208	A (H1)	B (H2)	NONE
460/480	(H1)	(H4)	(H2) TO (H3)

REV.	DESCRIPTION	ECO. #	DATE	DRAWN BY
02	ADDED NOTE FOR OPTION TZ PARAMETER CHANGES	5161	03/28/14	D.CMELAK
01	REMOVE WIRE# FROM T1 GROUND WIRE	5016	02/17/14	D.PACKER
00	INITIAL RELEASE		7/24/13	D.CMELAK

DATE	TITLE	DATE	TITLE
7/24/13	SCHMATIC DIAGRAM	7/24/13	Z1000 CONFIGURED

DATE	REVISION #	DATE	REVISION #	DATE	REVISION #
7/24/13	D	7/24/13	D	7/24/13	D

DS-Z1C3.05

\* - INDICATES COMPONENTS NOT SUPPLIED BY YASKAWA.  
 - - INDICATES CUSTOMER WIRING.  
 - - CONNECTED TO THE CABINET OR PANEL.

- NOTES:
1. CUSTOMER TO CONNECT THE CABINET GROUND LUGS TO EARTH GROUND AND UTILITY GROUND.
  2. WITHOUT THE INPUT CIRCUIT BREAKER OPTION PC OR PM OR WHEN NOTED ON THE CABINET DATA NAMEPLATE, BRANCH CIRCUIT PROTECTION MUST BE SUPPLIED BY THE INSTALLER.
  3. WITH A CONTROL TRANSFORMER, T1, POWER RATING 350VA OR GREATER, SECONDARY FUSE F6 IS ADDED.
  4. FOR 208VAC APPLICATIONS, SET E1-01 TO 208 AND SET E1-05 TO 208.
  5. SET DRIVE PARAMETER H1-03 TO 25, FOR EXTERNAL FAULT (NORMALLY CLOSED).
  6. FOR SPEED POT OPTION TZ, SET L4-05 TO 0 AND S5-01 TO 1.
  7. CONDUIT FITTINGS/HUBS SHALL COMPLY WITH THE 'STANDARD FOR CONDUIT, TUBING, AND CABLE FITTINGS, UL 514B', OR CONDUIT FITTINGS HAVING THE SAME ENVIRONMENTAL RATING AS THE ENCLOSURE SHALL BE USED.
  8. THE MOTOR OVERLOAD RELAYS ARE FACTORY SET FOR MANUAL RESET. CUSTOMER TO ADJUST THE MOTOR OVERLOAD RELAYS TRIP SETTING FOR THE ACTUAL AC MOTORS' FULL LOAD AMPS.
  9. CUSTOMER TO ADJUST THE THERMOSTAT ON THE SPACE HEATER HR1 FOR THE MINIMUM DESIRED TEMPERATURE INSIDE THE DRIVE CABINET. THIS SET TEMPERATURE IS NORMALLY SELECTED TO BE SLIGHTLY HIGHER THAN THE MINIMUM AMBIENT TEMPERATURE OF THE AIR SURROUNDING THE CABINET, AND IS THE TEMPERATURE AT WHICH THE SPACE HEATER HR1 WILL SHUT OFF.