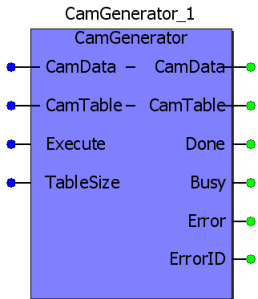


Cam Toolbox

MOTIONWORKS® IEC TOOLBOXES

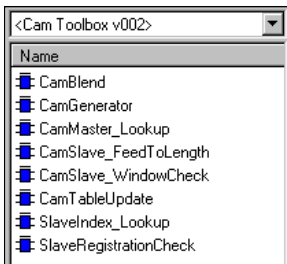
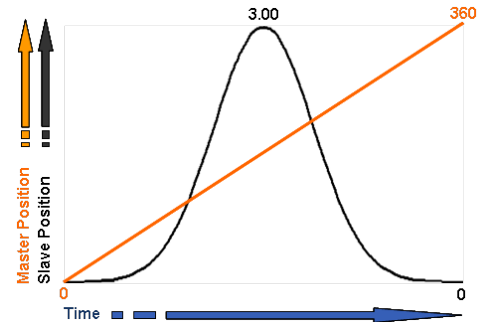


Replacing fixed mechanical cams with programmable electronic servo-driven cams has become a favorite way for machine builders to increase the flexibility and performance of today's machinery. Yaskawa has always excelled in this area.

The IEC61131-3 programming environment provides a perfect means to make cam calculation, synchronization and print registration easier to implement.

The Cam Toolbox from Yaskawa provides a library of PLCopen-based functions for MP2000iec controllers that users can import into their IEC61131-3 control program.

Leveraging the pre-built library will save program development time for the software engineer and help speed project completion.



Yaskawa application toolboxes provide:

- Improved Ease of Use
- Reduced Risk
- Reduced Total Cost of Ownership

For more information and to discuss your application, contact your local Yaskawa Channel Partner or find them at www.yaskawa.com/partners.

