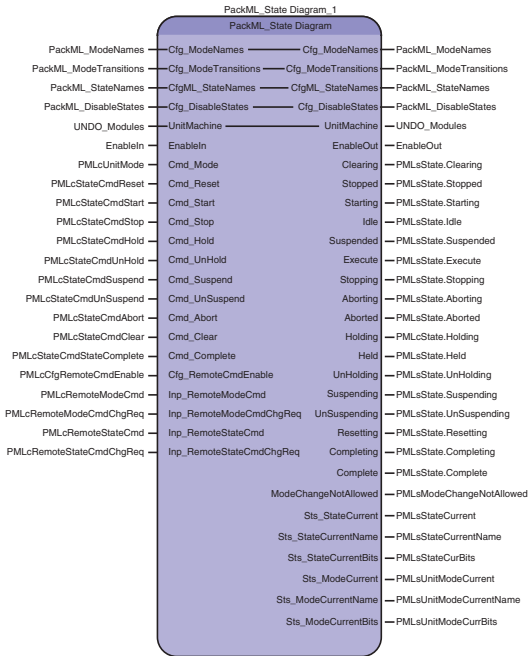


# PackML Toolbox

## MOTIONWORKS® IEC TOOLBOXES

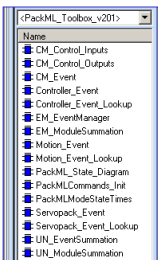


The PackML State Model has proven to be a solid program architecture that benefits OEMs and End Users alike. Reusable code modules designed to match the machine configuration speed development time, while a defined program flow aids data collection and production monitoring.

The Yaskawa PackML Toolbox supports all 17 pre-defined states, implements a PackTags approach and allows construction of S88:Make2Pack user applications using the ISA88 physical hierarchy.

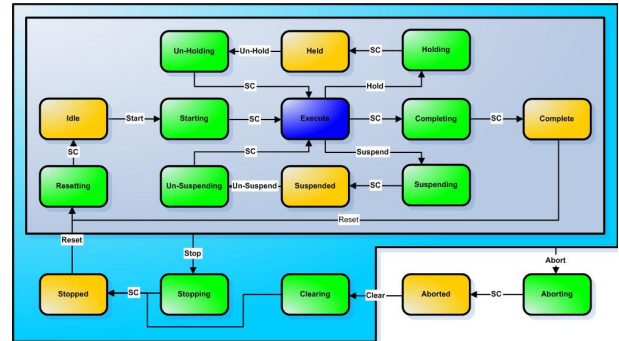
The PackML Toolbox from Yaskawa provides a library of PLCopen-based functions for MotionWorks IEC controllers that users can import into their IEC61131-3 control program.

Leveraging the pre-built library will save program development time for the software engineer and help speed project completion.



Yaskawa application toolboxes provide:

- Improved Ease of Use
- Reduced Risk
- Reduced Total Cost of Ownership



For more information and to discuss your application, contact your local Yaskawa Channel Partner or find them at [www.yaskawa.com/partners](http://www.yaskawa.com/partners).

