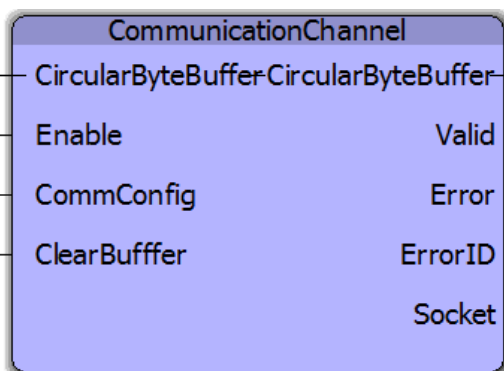


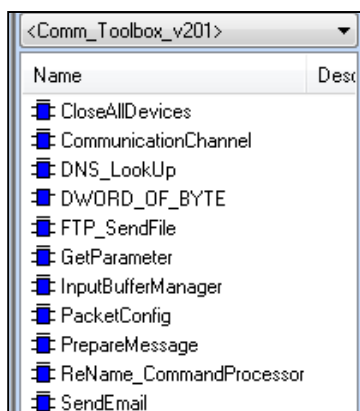
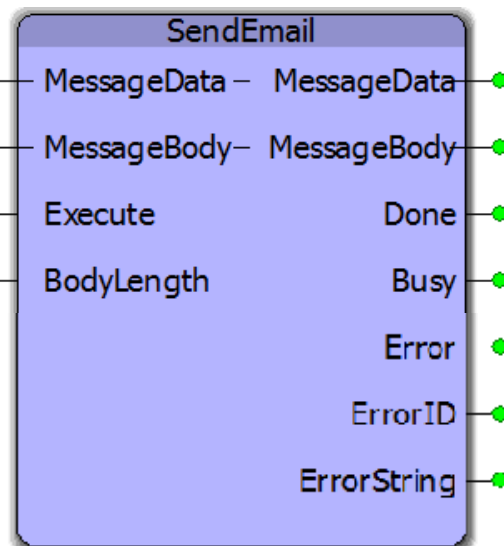
# Comm Toolbox



The functions in this user library make it easy to incorporate advanced controller communications such as email and FTP. Also included is a set of function blocks to simplify the creation of a custom ASCII command / response interface with other equipment using and Ethernet or serial connection.

The Comm Toolbox from Yaskawa provides a library of PLCopen-based functions for all MPiec controllers that users can import into their IEC61131-3 control program.

Leveraging the pre-built library will save program development time for the software engineer and help speed project completion.



## Yaskawa application toolboxes provide:

- Improved Ease of Use
- Reduced Risk
- Reduced Total Cost of Ownership

For more information and to discuss your application, contact your local Yaskawa Channel Partner or find them at [www.yaskawa.com/partners](http://www.yaskawa.com/partners).

