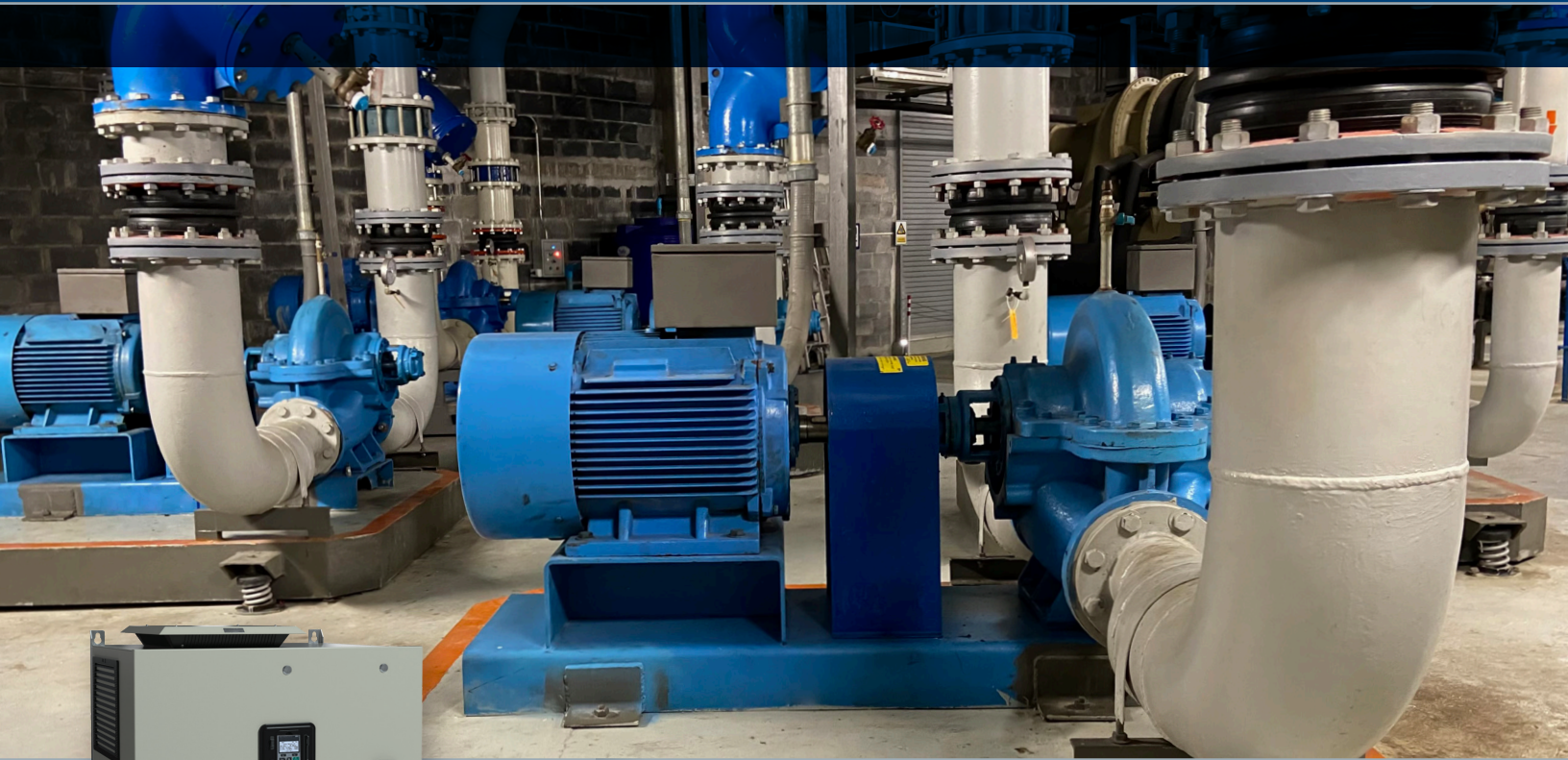


YASKAWA

Z1000U

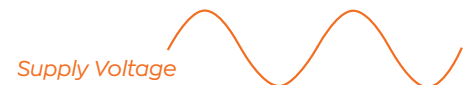
HVAC MATRIX DRIVE
UL TYPE 12 PACKAGES



Z1000U HVAC MATRIX DRIVE
UL Type 12 Electronic Bypass
and Configured Packages

INPUT CURRENT WHAT DO YOU WANT?

Voltage is typically
supplied as a sine wave



When current is not the same,
its waveform is non-linear



The ideal input
current waveform
matches the voltage



Z1000U HVAC MATRIX DRIVE UL TYPE 12 PACKAGES

Enhance your green initiative with the Z1000U HVAC Matrix Drive, the product that facilitates IEEE-519 compliance and enhances your energy saving capabilities.

KEY BENEFITS

- ✓ Industry-leading low input current harmonics facilitates IEEE 519 compliance
- ✓ Industry-leading low speed/load input current harmonics performance
- ✓ Eliminate harmonics with embedded across-the-line functionality
- ✓ Electronic bypass functionality for automatic transfer
- ✓ Near unity true power factor at full load for optimum efficiency
- ✓ Industry-leading efficiency at all speeds and loads, minimizing operational costs
- ✓ Future-ready with permanent magnet motor control
- ✓ 100 kAIC SCCR on bypass packages and configured packages with optional circuit breaker
- ✓ Integrated input fusing provides inherent device protection with a 100 kA SCCR
- ✓ Industry-leading MTBF (> 28 years)

FEATURES

- Door mounted keypad
- Lockable circuit breaker/disconnect
- 104°F/40°C maximum ambient temperature
- UL Listed

OPTIONS

- 100k Circuit breaker*
- Drive input disconnect**
- Custom Nameplates
- EtherNet/IP
- Lonworks
- Speed potentiometer
- 200 VA transformer

* Standard on bypass packages

** Available on bypass packages Z1D2B011 through Z1D2B077

MODELS AND DIMENSIONS

480 V UL Type 12 Enclosures

Rated Output Current	Nominal HP ²	Z1000U Electronic Bypass					Z1000U Configured				
		Base Model Number	Dimensions (inches)			Weight (lb) ¹	Base Model Number	Dimensions (inches)			Weight (lb) ¹
			Z1D2B□□□	H	W			D	Z1E2B□□□	H	
11	7.5	O11PN	40.2	23.3	19.1	217	O11PN	40.2	23.3	19.1	214
14	10	O14PN	40.2	23.3	19.1	218	O14PN	40.2	23.3	19.1	214
21	15	O21PN	40.2	23.3	19.1	218	O21PN	40.2	23.3	19.1	215
27	20	O27PN	40.2	23.3	19.1	220	O27PN	40.2	23.3	19.1	215
34	25	O34PN	47.0	27.3	21.6	279	O34PN	47.0	27.3	21.6	269
40	30	O40PN	47.0	27.3	21.6	308	O40PN	47.0	27.3	21.6	296
52	40	O52PN	47.0	27.3	21.6	312	O52PN	47.0	27.3	21.6	300
65	50	O65PN	47.0	27.3	21.6	326	O65PN	47.0	27.3	21.6	308
77	60	O77PN	47.0	27.3	21.6	327	O77PN	47.0	27.3	21.6	311
96	75	O96PN	56.2	33.3	27.0	497	O96PN	56.2	33.3	27.0	481
124	100	124PN	56.2	33.3	27.0	501	124PN	56.2	33.3	27.0	485
156	125	156PN	84.0	37.9	26.9	923	156PN	84.0	37.9	26.9	888
180	150	180PN	84.0	37.9	26.9	938	180PN	84.0	37.9	26.9	897

*1: This data represents the drive weight only, not shipping weight.

*2: Horsepower rating is based on standard NEMA B, 4-pole motor design as represented in NEC table 430.150 Full-Load Current, Three-Phase Alternating Current Motors at 460 volts.

IT'S PERSONAL

YASKAWA

Yaskawa America, Inc. 1-800-YASKAWA | Email: info@yaskawa.com | yaskawa.com
Document No. FL.Z1000UC.01 | 06/01/2023 | © 2023 Yaskawa America, Inc.