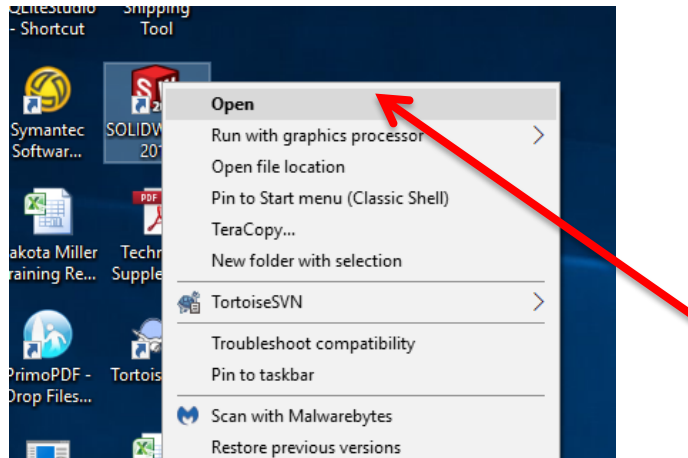


# Yaskawa Motion Solidworks ToolBox Install Instructions

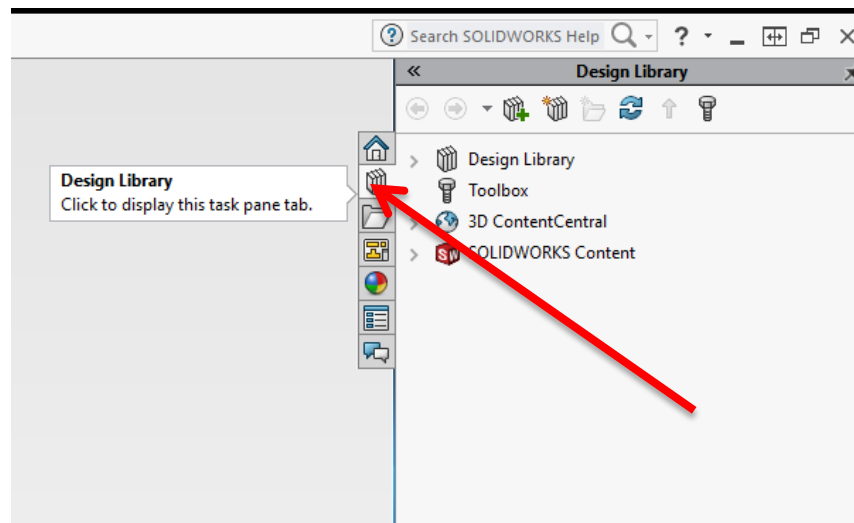
Rev 0.00

## PART 1: SOLID MODELS

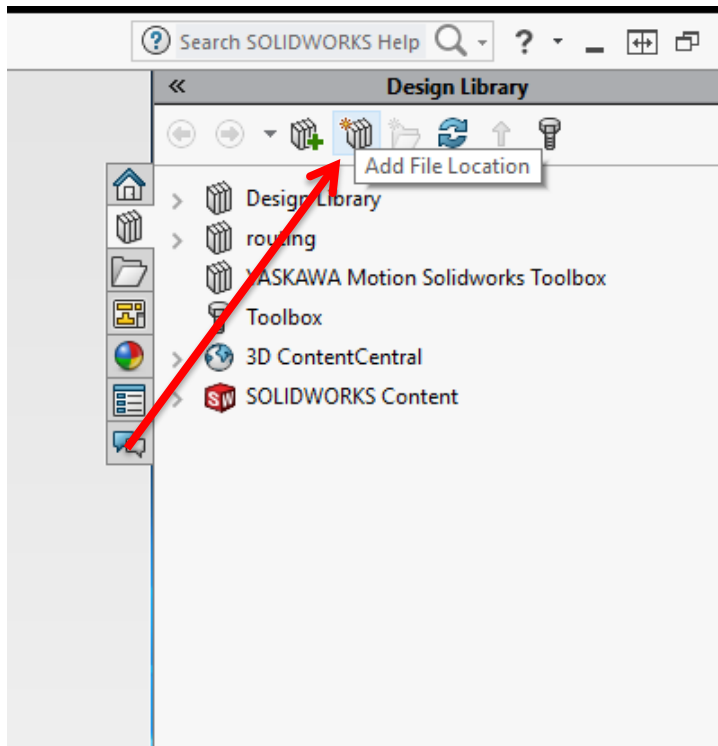
Step 1: Open Solidworks



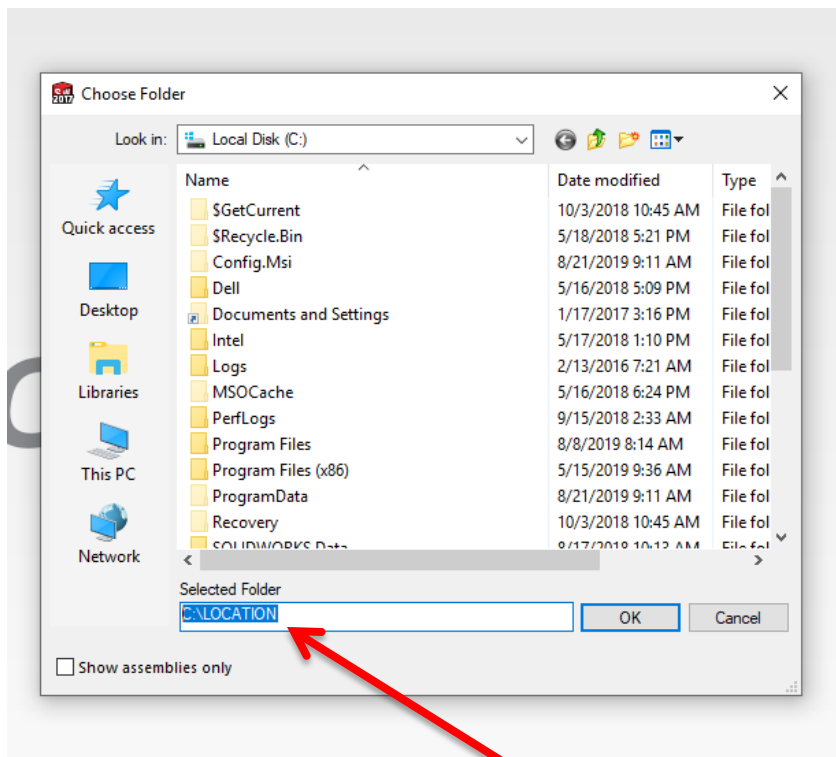
Step 2: Navigate to Design Library Task Pane and left click to select – by default, this is located on the far right of the Solidworks Environment



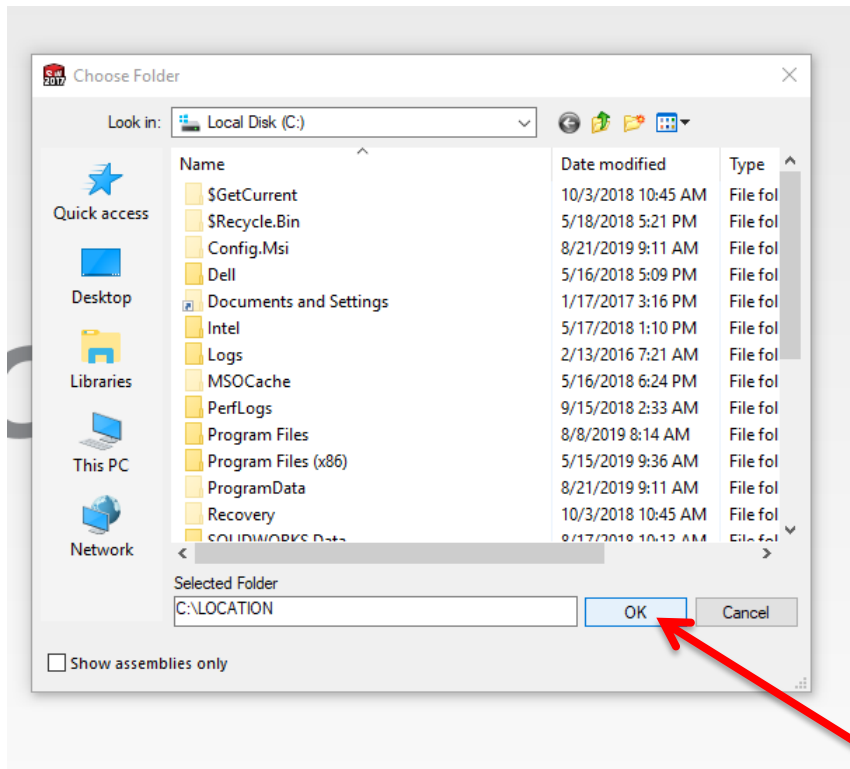
Step 3: Left Click on the “Add File Location” button



Step 4: Input the location on your computer where the “YASKAWA Motion Solidworks Toolbox VX.XX” was stored

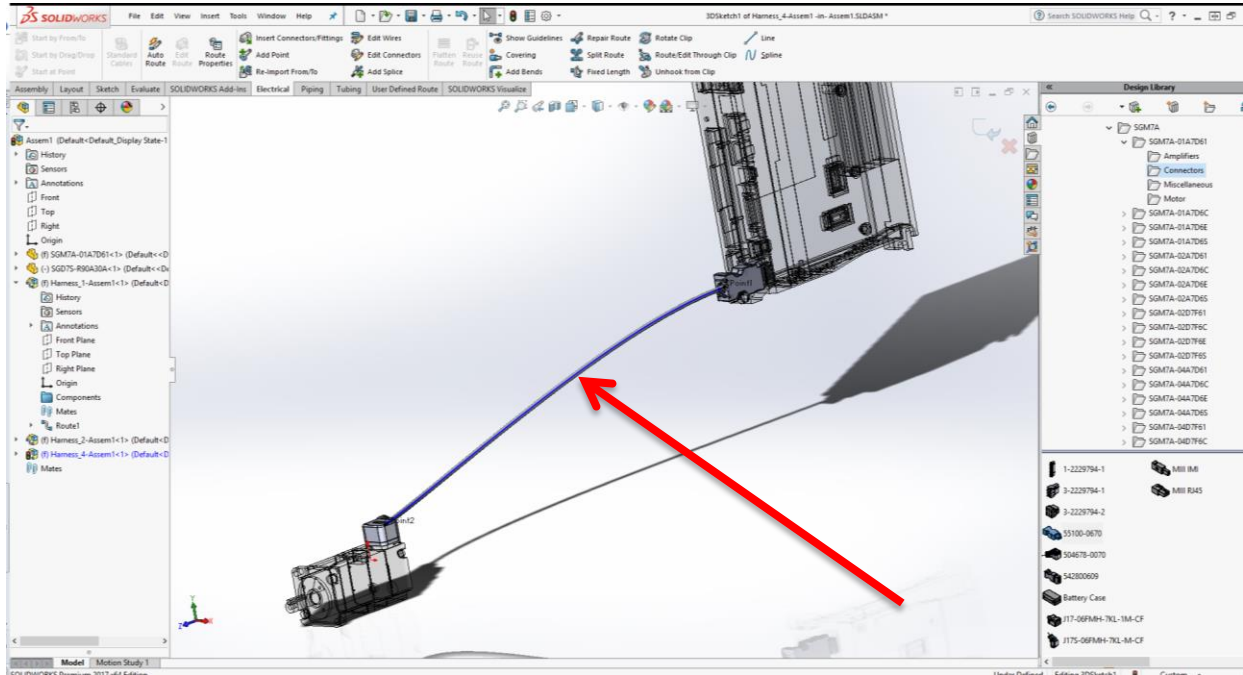


Step 5: Left Click the OK button

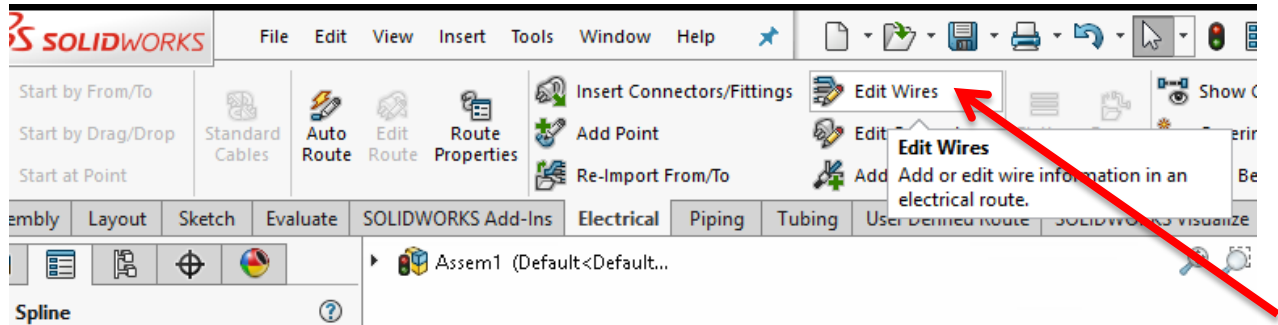


## PART 2: CABLE XML FILE

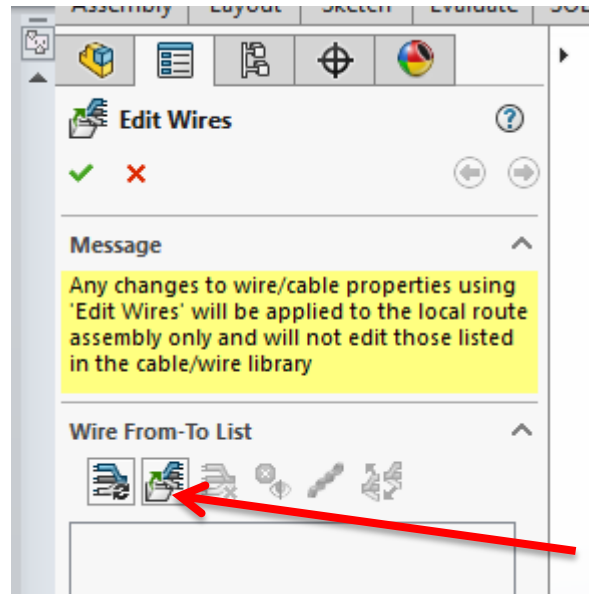
Step 1: Drag in any motor and corresponding amplifier from the Toolbox into an assembly. Proceed to connectorize it, and create an auto-route between the two connectors (see video instructions if unsure on how to do this). Left click on the route created to select it



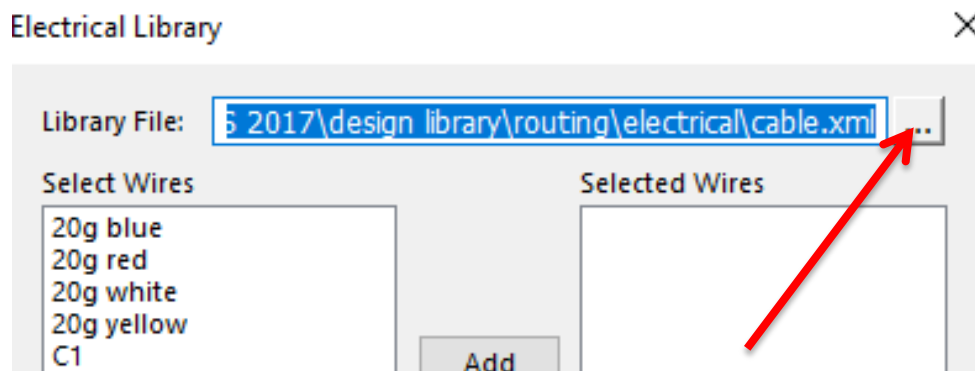
Step 2: Click the edit wires button on the Electrical Routing Tab



Step 3: Click on the add wire button of the Edit wires popup box in the PropertyManager



Step 4: Click on the ellipsis next to the default library location in the Electrical Library popup menu



Step 5: Copy and paste the YAS\_Cable\_VXXX.xml file into the default folder

