

- Uninstall previous version before installing version 5.75
- Version 5.75 supports Windows7 (32-bit and 64-bit)
- Please reinstall the USB driver if you are upgrading from versions 5.53 or lower, then install new driver that is included with version 5.75

Function Improvement:

<Σ-7 Components>

- Updated target IO data in Trace.
- In Test Without Motor mode, tuning and ripple compensation are disabled.
- Fixed display of Pn601, Pn825.

- Help files are compatible with Adobe Acrobat Reader DC

- Uninstall previous version before installing version 5.74
- Version 5.74 supports Windows7 (32-bit and 64-bit)
- Please reinstall the USB driver if you are upgrading from previous versions (5.53 or lower), then install new driver that is included with version 5.74
- Help files are not compatible with Adobe Acrobat Reader DC when access within Version 5.74

[Additioanl Function/Support]

1. Support polarity detection and write motor parameter for rotary type Sigma-7 Servopack.
2. Support speed unit is "mm/s" for using linear motor and display motor model type.
3. Pn003 is set to 1, when using Sigma-7 parameter converter function with linear-type Servopack, and making linear parameter in offline.
4. Resolution can display 6 digits after the decimal point.
5. Keep system monitor layout after restarting SigmaWin+.
6. Special parameter file can be detected at parameter file reading dialog.
7. Life time display is gray out if the value is "0xFFFF".
8. Support life time monitor for Sigma-5 large capacity Servopack.
9. Indexer module (SGDV-OCA03A) Ver7
10. Sigma-7 Dynamic Brake option (SGD7S-xxxxxxx020)
11. Un032, 033, 034 monitor.
12. Axis number display is available when "system monitor" screen is docked with the main screen.
13. Able to execute Origin Search for linear with Sigma-7W.
14. Parameter online edit for multiple axis.
15. EtherCAT software version display.

[Bug fix]

1. A.A10 to A.A48 alarm contents for Sigma-7 were wrong.

2. Alarm history for Sigma-7 Indexer module is not updated.
3. When starting Jog speed table in Indexer, system error (2BFF25FF) is generated.
4. Not able to search with controller and EtherNet at the same time.
5. 24bit Encoder symbol on Setup wizard.
6. A.bE0 Firmware error.
7. Pn002 digit information is double with SGDv-xxxx11
8. With SGD7S-xxxx00(AP), if motor type is linear, Pn002 display is for SGD7S-xxxx10(M-2).
9. If trigger type is "Above trigger lv", the actual trigger condition is "Below trigger lv".
10. If using DeviceNet module (SGDV-OCA04A/05A), there is no alert to cycle power when changing PnB13.

- Uninstall previous version before installing version 5.72
- Version 5.72 supports Windows7 (32-bit and 64-bit)
- Please reinstall the USB driver if you are upgrading from previous versions (5.53 or lower), then install new driver that is included with version 5.72

Functional improvement

<Σ-5 Components>

1. Support Sigma-5 multi-winding system.
2. Support DC input Sigma-5 (mini) firmware up to Ver.002B.

<Σ-7 Components>

1. Support linear motor.
2. Support inertia ID function. (※ SERVOPACK software Ver000D or higher)
3. Support lifetime monitor function. (※ SERVOPACK software Ver000A or higher)
4. Support parameter tab for Sigma-7S trace. Σ-7S model (SGD7S- □□□□ 00/10/20)
5. Axis name can be set to 32 characters.
6. Revised the details of the alarm analysis statement for Sigma-7 and Sigma-5.
7. Support Wiring check for Sigma-7
8. Support BTO service for Sigma-7
9. Sigma-5 compatibility mode in Sigma-7 (Ver.000C, Pn.040) can be used.
10. Support Sigma-7 command option and EtherCAT type.
11. Support Sigma-5 option card for Sigma-7 Servopack. (Safety, Indexer, and DeviceNet modules.)
12. Support Sigma-7 firmware version Ver.000E or higher. (Pn846 and Pn848 can be edited.)
13. It is now possible to edit Sigma-7 Servopack by online mode when unsupported option card is attached.
14. Change parameter names to the same as in Users Manual.
15. Support A.101/EC8/EC9 alarm.
16. Support Acrobat Reader X/XI in Help menu.
17. Support connecting Sigma-7 M-2 through MP controller.
18. Bug fix for parameter converter function. (Pn5xx was not converted in previous version.)

19. Bug fix for Trace function for Sigma-7. (I/O could not be captured, description of settling time was wrong, trace setting was wrong.)

<Σ-V-MD Components>

1. Added supported for SGDV-MDA01 /MDB01
2. Bug fix for Sigma-5 MD function. (Some parameter was not displayed on previous version.)

[Bug fix]

1. Inertia ID function: When using SGME motor, lower limit of acceleration range is greater than higher limit.
2. Connection via PCI doesn't work.
3. Pn515 parameter edit at Sigma-5 large capacity doesn't work correctly.

SigmaWin+ 5.70a Release Notes

5/30/2014

- Uninstall previous version before installing version 5.70a
- Version 5.70a supports Windows7 (32-bit and 64-bit)
- Please reinstall the USB driver if you are upgrading from previous versions (5.53 or lower), then install new driver that is included with version 5.70a

<Added Specifications>

Supported Σ-7S model and Σ-7W model (SGD7W-□ □ □ □ 20 and SGD7S-□ □ □ □ 00/10/20).
(For Sigma-7, this version does not support the "Life monitor" function and the "Moment of inertia identification" function. Please use the moment of inertia calculation within Advanced Autotuning).

<Additional Function Improvement >

Large capacity Σ-V series (SGDV-□ □ □ □ 11/21), is now able to connect via the MP controller.

SigmaWin+ 5.62 Release Notes

1/9/2014

- Uninstall previous version before installing version 5.62
- Version 5.62 supports Windows7 (32-bit and 64-bit)
- Please reinstall the USB driver if you are upgrading from previous versions (5.53 or lower), then install new driver that is included with version 5.62

<Additional Functions>

Added support for Sigma-5 SGD V-MD Servopacks

[Bug Fix]

1. Product information is not displayed correctly.
(Applicable version: Ver.5.60, Ver.5.61)

2. In parameter setting display for Sigma-5 DeviceNet, Flash write button cannot be selected.
(Applicable version: from Ver.5.57 to Ver.5.61)
3. If using Sigma-5 large capacity ver.0029, default parameter for Pn515 is incorrect, and written into other parameters as follows.
SGDV-xxxx01: Pn515 value is written into Pn50B.
SGDV-xxxx11: Pn515 value is written into Pn50A.
(Applicable version: Ver.5.60, Ver.5.61)
4. Connection via MP controller does not display 31st axis and 32nd axis if connecting 31 axis or more.
(Applicable version: Ver.5.61)
5. Mechatrolink communication reset cannot be performed if ST# (Station number) and ADR (Address number) is different.
(Applicable version: Ver.5.60, Ver.5.61)

- Uninstall previous version before installing version 5.61
- Version 5.61 supports Windows7 (32-bit and 64-bit)
- Please reinstall the USB driver if you are upgrading from previous versions (5.53 or lower)

<Additional Functions>

- (1) Support Sigma-5 Option card combination as follows:

		1	2	3	4	5	6	7	8	9
1	EtherCAT					OK	OK	OK	OK	OK
2	INDEXER						OK	OK	OK	OK
3	DeviceNet(04)						OK	OK	OK	OK
4	DeviceNet(05)						OK	OK	OK	OK
5	Safety	OK								
6	Fully-closed	OK	OK	OK	OK					
7	FeedBack(01)	OK	OK	OK	OK					
8	FeedBack(03)	OK	OK	OK	OK					
9	FeedBack(04)	OK	OK	OK	OK					

- (2) Added support of the data base for Feedback option module (SGDV-OFB01A, OFB03A, OFB04A).
These features are enabled when the FB option module is mounted in Servopack with firmware version 0029 or higher
- (3) Added support for Servopack firmware version 0029
- (4) Added support "Buffer strategies for the interpolated position mode" for EthreCAT(CoE) module.
- (5) Added support of the parameters and I/O signals for Sigma-5 large capacity (M3/Command)
- (6) Upgraded the database for Safety option module

[Bug Fix]

- 1) Corrected display of I/O signals for DeviceNet option module
- 2) Corrected the issue that SigmaWin+ may not run via controller connection
- 3) Corrected the issue when the parameter edit is started by the combination with EtherCAT option module (Ver3 or less), abnormal data may be generated

- Uninstall previous version before installing version 5.58
- Version 5.58 supports Windows7 (32-bit and 64-bit)
- Please reinstall the USB driver if you are upgrading from previous versions (5.53 or lower)

<Additional Functions>

- (1) Added support for 200V Sigma-5 large capacity Servopacks
- (2) Added support for DC input Sigma-5 Servopacks
- (3) Added support to connect MP controller without using MPE720
- (4) Added support for new Sigma-5 Servopack parameters: Support Sigma-5 large capacity parameters Pn515, Pn601; and Sigma-5 mini parameters Pn550-Pn553. Pn20D(4bytes parameter) was corrected to connect servo by using a controller via communication manager

- Uninstall previous version before installing version 5.57
- Version 5.57 supports Windows7 (32-bit and 64-bit)
- Please reinstall the USB driver if you are upgrading from previous versions (5.53 or lower)

<Additional Functions>

- (1) Added support for Sigma-5 DeviceNet (SGDV-OCA04A, SGDV-OCA05A)

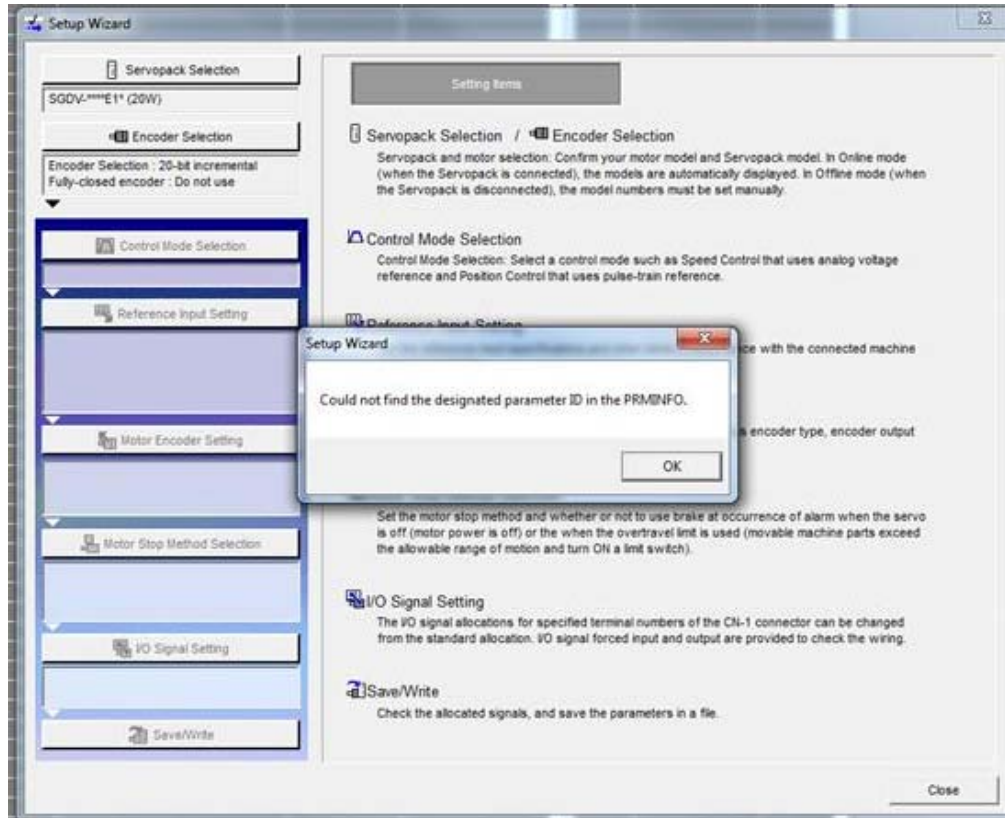
- Uninstall previous version before installing version 5.56a
- Version 5.56a supports Windows7 (32-bit and 64-bit)
- Please reinstall the USB driver if you are upgrading from previous versions (5.53 or lower)

<Additional Functions>

- (1) Added support for Sigma-5 400V large capacity Servopacks
- (2) Added support for Sigma-5 MECHATROLINK- II DC power input (SGDV-*** E11) Servopacks through the controller via MP-in. Units with SVB built-in (CPU: higher than Ver2.81, SVB-01: Ver1.30 or higher)
- (3) Added support for Ver0028 Sigma-5 Servopacks
- (4) Added support for Sigma-5 MECHATROLINK-III servo (SGDV-**** 21/25) + Safety option module combination
- (5) In the Trace function: added "Estimated Disturbance Torque."

[Bug fixes]

(1) In version 5.55, when using the Setup Wizard, if the combination of Sigma-5 command-option type Servopack (SGDV-****E1/E5) + Sigma-5 INDEXER (SGDV-OCA03A) option module is selected, the wizard cannot proceed and the following message is displayed:



This is corrected in version 5.56a.

(2) Fixed the value for Cn-0F of SGDF-□□□P Servopack.

- Version 5.55 supports Windows7 64-bit
- Please reinstall the USB driver if you are upgrading from previous versions (5.53 or lower)

<Additional Function>

- 1) MP controller MP3200 support added. (MPE720 Ver 7.11 or higher)
- 2) MP controller to Sigma-5 mini (SGDV-21) support added. (MPE720 Ver7.11 or higher, or MPE720 Ver 6.23 or higher)
- 3) Sigma-5 INDEXER Ver0004 PnB53 is added

SigmaWin+ 5.54 Release Notes

10/18/2011

- Version 5.54 supports Windows7 64-bit

- Please reinstall the USB driver with the one supplied with SigmaWin+ 5.54 if you are upgrading from previous versions

<Additional Function>

1) Support for DC power input Sigma-5 series (SGDV-11/21/P1/S1) added

SigmaWin+ 5.53 Release Notes

7/28/2011

- Version 5.53 supports Windows7 32-bit only

- Please reinstall the USB driver with the one supplied with SigmaWin+ 5.53 if you are upgrading from previous versions

<Additional Function>

1) Improved compatibility for the servo amplifier firmware Ver.0023 or higher:

* The parameter and monitor are added for fanless servo (Environment Monitor), backlash offset function, and homing speed range

<Bug Fix>

1) Parameter download failure popup comes up even if parameter was downloaded successfully when using motor parameter download function for linear scale

2) Pn552 and 553 (Analog monitor output voltage gains) gets wrong setting when using parameter conversion function to convert Sigma-2 parameter for Sigma-5 parameter.

If Pn003 bit 0 or 1 is set as 0, 1, 5, 6 or 7 on the Sigma-2, this problem will occur.
