

Subject: Product Note	Product: PDE-U-IEC** PDE-U-IE2**	Doc#: PN.MCD.09.027
Title: Installing or Upgrading MotionWorks IEC		

Installation and Upgrade Instructions for MotionWorks IEC

This document covers three topics:

1. First Time Installations
2. Software Registration
3. Upgrading Previous Releases

First Time Installations

1. All users of this software must be in the Windows “administrators” group. If you have any questions, contact your I.T. department.
2. The software will not run, install, or uninstall correctly if you are logged in as a networked user. The following products are known to cause this issue:
 - [Windows Remote Desktop](#)
 - [Windows VirtualPC](#)
 - [Windows 7 in XP mode](#)
3. Certain antivirus programs will prevent the software from installing. One product known to cause issues is “Eset NOD32.” Disable your antivirus software if problems arise.

Subject: Product Note	Product: PDE-U-IEC** PDE-U-IE2**	Doc#: PN.MCD.09.027
Title: Installing or Upgrading MotionWorks IEC		

4. Some Windows firewall settings will prevent you from registering the software. If you see the following:



Disable the Windows firewall to register MotionWorks IEC and then enable it again afterward.

5. Release version 2.1.0.152 requires Microsoft .NET framework 3.5, which is not included in the installer package due to its large size. The installer for .Net 3.5 is over 230 MB, so Yaskawa decided not to include it in the MotionWorks IEC installer package. Please download it from Microsoft as needed for Win XP.
<http://download.microsoft.com/download/2/0/e/20e90413-712f-438c-988e-fdaa79a8ac3d/dotnetfx35.exe>
6. Be patient. The software may take several minutes to install and invokes more than one installer. There are processes that occur in the background, so progress bars are not always updated. Depending on the speed of your PC, you may see DOS command windows opening and closing. This is normal.
7. The ZIP password for the Express and Pro versions is **iec61131**.

Subject: Product Note	Product: PDE-U-IEC** PDE-U-IE2**	Doc#: PN.MCD.09.027
Title: Installing or Upgrading MotionWorks IEC		

Software Registration

Once the MotionWorks IEC is installed, it will run for up to 30 days before the registration process must be completed.

NOTE: If the computer's system clock is altered after the software is installed, it will eliminate the remaining days of the trial period, and the software must be registered before use can continue.

NOTE: If the software is uninstalled and reinstalled before it is registered, it will eliminate the remaining days of the trial period, and the software must be registered before use can continue.

You will see this message box briefly when opening a project:



Pressing "Enter" while this screen is displayed will open the registration screen.

Subject: Product Note	Product: PDE-U-IEC** PDE-U-IE2**	Doc#: PN.MCD.09.027
Title: Installing or Upgrading MotionWorks IEC		

- When the message shows “xx days out of 30” it means that the software has not been registered.
- When this screen shows “Unlimited License” it means the software has been successfully registered.

There are two methods available to register: automatic and manual.



Automatic Method:

Press the “Electronic Registration” button to register the software automatically via the internet.

Subject: Product Note	Product: PDE-U-IEC** PDE-U-IE2**	Doc#: PN.MCD.09.027
Title: Installing or Upgrading MotionWorks IEC		

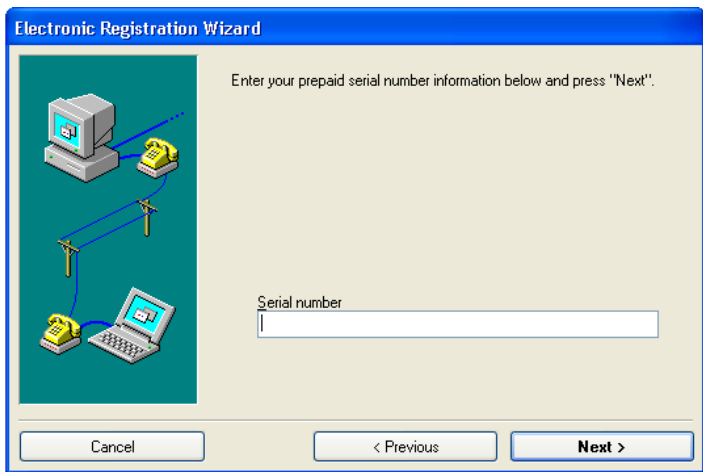
Manual Method:

If no internet access is available, either call Yaskawa America Incorporated at 1 (800) YASKAWA (then use menu selection 2, and 2 again for motion technical support) and give the Site Code information or email the Site Code to motioninfo@yaskawa.com.

Once a Site Key is provided to you, enter it into the box shown above and press "Validate."

The following instructions are the same for either registration method.

Enter the serial number provided on the CD case.



Subject: Product Note	Product: PDE-U-IEC** PDE-U-IE2**	Doc#: PN.MCD.09.027
Title: Installing or Upgrading MotionWorks IEC		

Fill in the personal information.

Electronic Registration Wizard

Please fill out the following form. Fields marked with (*) are required. Your information will be securely encrypted before being sent.

First name: * Last name: * Company:

Address: * Additional address:

City: * Country: *

Postal code: * Province/State:

Email address: *

Phone number: Fax number:

Cancel < Previous **Next >**

Finish the wizard, and the software registration will be complete.

Subject: Product Note	Product: PDE-U-IEC** PDE-U-IE2**	Doc#: PN.MCD.09.027
Title: Installing or Upgrading MotionWorks IEC		

Upgrading Previous Releases

Software upgrade policy

Free upgrades are provided within any major version number of the product to another version with the same major version number. For example, any version 1.x.x can be upgraded to any other version 1.x.x without obtaining a new license key.

Note that it is only possible to upgrade from Express to Express, or from Pro to Pro versions.

Upgrading from a 1.x version to a 2.x version

As described in the software policy, this is not considered an upgrade. A new license is required and can be obtained by purchasing any of the following part numbers:

	MotionWorks IEC Express	MotionWorks IEC Pro
Single license	PDE-U-IE2S1	PDE-U-IE2P1
5 license	PDE-U-IE2S5	PDE-U-IE2P5
10 license	PDE-U-IE2S10	PDE-U-IE2P10
Floating license		PDE-U-IE2PH

Subject: Product Note	Product: PDE-U-IEC** PDE-U-IE2**	Doc#: PN.MCD.09.027
Title: Installing or Upgrading MotionWorks IEC		

Upgrading a 1.x version when 2.x is also installed.

If running Windows XP, It is possible to run side by side installations of MotionWorks IEC 1.x and 2.x, however, version 1.x must be installed before 2.x. If Version 1.x is installed after 2.x, it will not be possible to save the Hardware Configuration.

Follow this procedure:

1. Uninstall 2.x
2. Uninstall 1.x
3. Upgrade 1.x
4. Install 2.x

Upgrading from a 1.x version higher than 1.0.5 to another 1.x version.

Uninstall the previous version of MotionWorks IEC before installing the new copy.

The upgrade procedure has been simplified compared to procedure required for the 1.0.5 release. The uninstaller will keep track of the license automatically. Unregistering the license manually is not required.