

Title: Updating MPiec Firmware using WebUI

Product(s): MP3200iec, MP3300iec, MP2600iec, Sigma-7Siec

Doc. No. PN.MPIEC.01

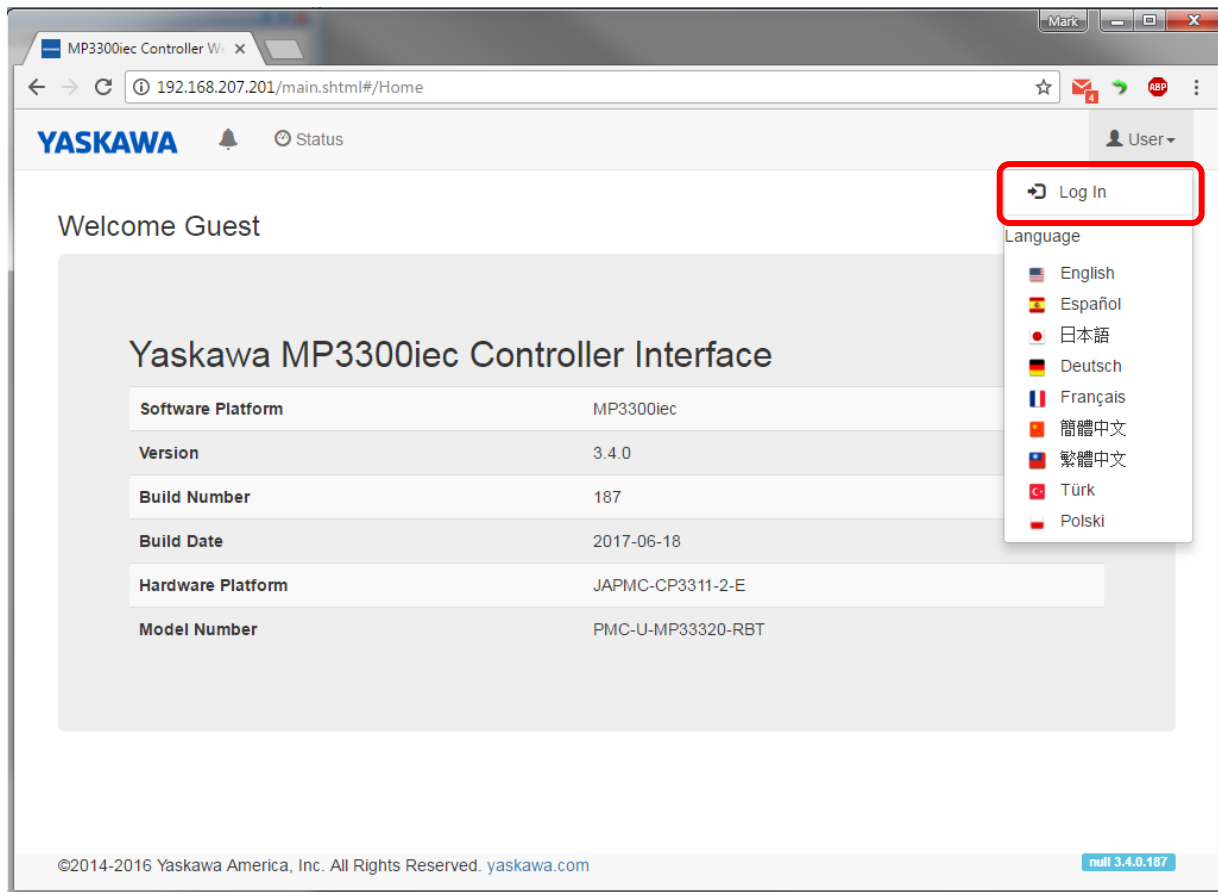
Overview

This document contains the procedure to use WebUI to update controller firmware. WebUI is available when using a modern web browser (Chrome, Firefox, IE11, etc.) on firmware versions 3.2.0 and later.

To update a controller with the classic web interface (firmware 3.1 and earlier), refer to [document PN.MCD.08.083](#).

Logging in to the controller

Log in to the controller by choosing the “Log In” option from the User menu.



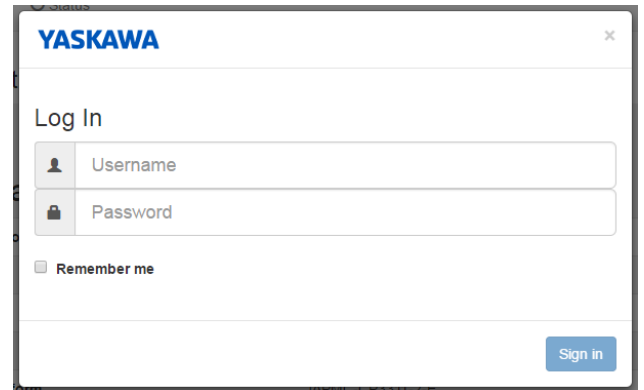
Title: Updating MPiec Firmware using WebUI

Product(s): MP3200iec, MP3300iec, MP2600iec, Sigma-7Siec

Doc. No. PN.MPIEC.01

Enter the Username and Password for the controller as shown below. Both Username and Password are case sensitive:

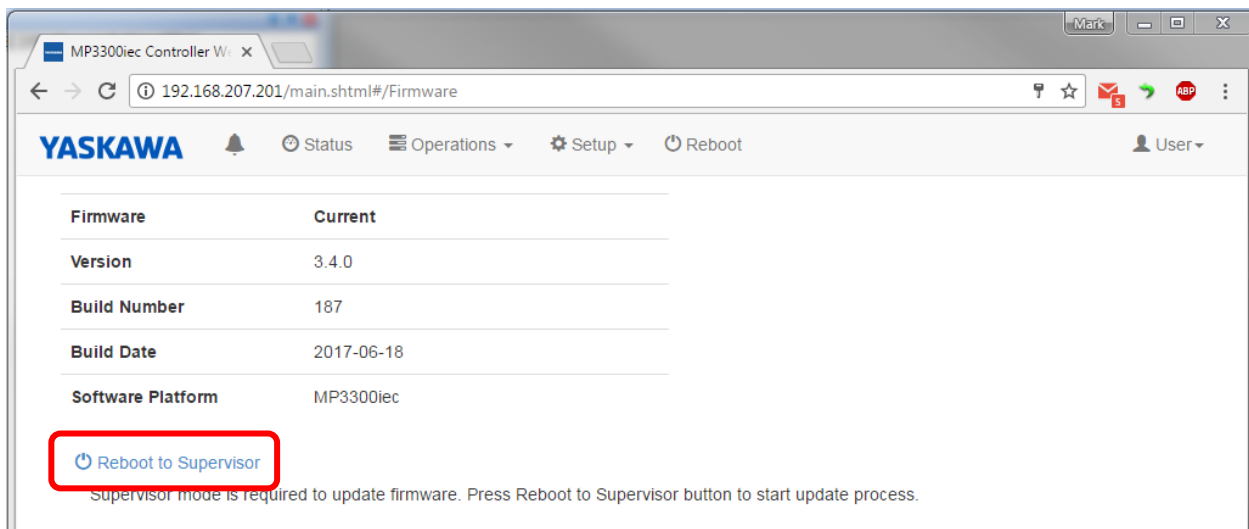
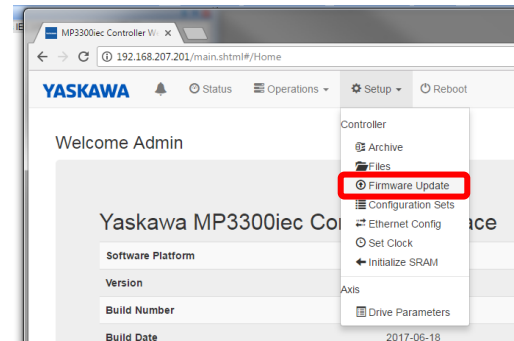
Controller Type	Username	Password
MP23x0iec	Admin	MP2300S
MP2600iec	Admin	MP2600
MP3200iec	Admin	MP3200
MP3300iec	Admin	MP3300
Sigma-7Siec	Admin	Sigma-7S



Firmware Update page and Supervisor Mode

To begin the firmware update process, navigate to the “Firmware Update” option in the Setup menu.

In order to update the firmware, the controller must be in a special mode called Supervisor Mode. To do this, choose the “Reboot to Supervisor” option on the Firmware Update page.



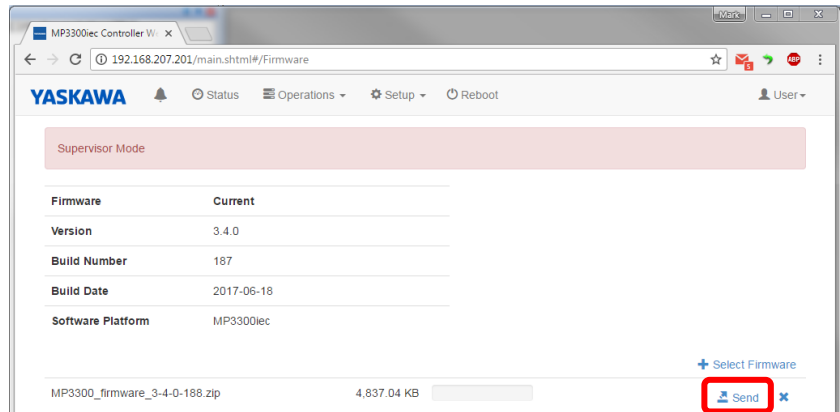
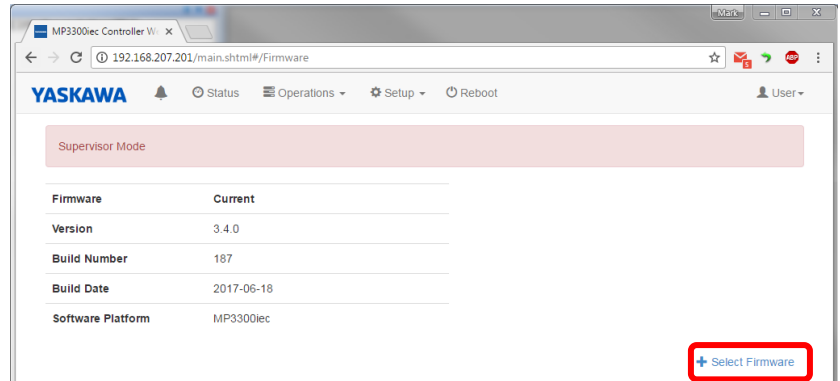
Title: Updating MPiec Firmware using WebUI

Product(s): MP3200iec, MP3300iec, MP2600iec, Sigma-7Siec

Doc. No. PN.MPIEC.01

After rebooting, an alert will appear on the interface indicating that Supervisor Mode is active and the current firmware version will be shown. Use the “Select Firmware” option to choose the firmware file. DO NOT UNZIP the firmware file; the controller will do this before installing. The latest firmware releases are found at yaskawa.com/iecfw.

After selecting the firmware, use the “Send” option to send the firmware file to the controller.

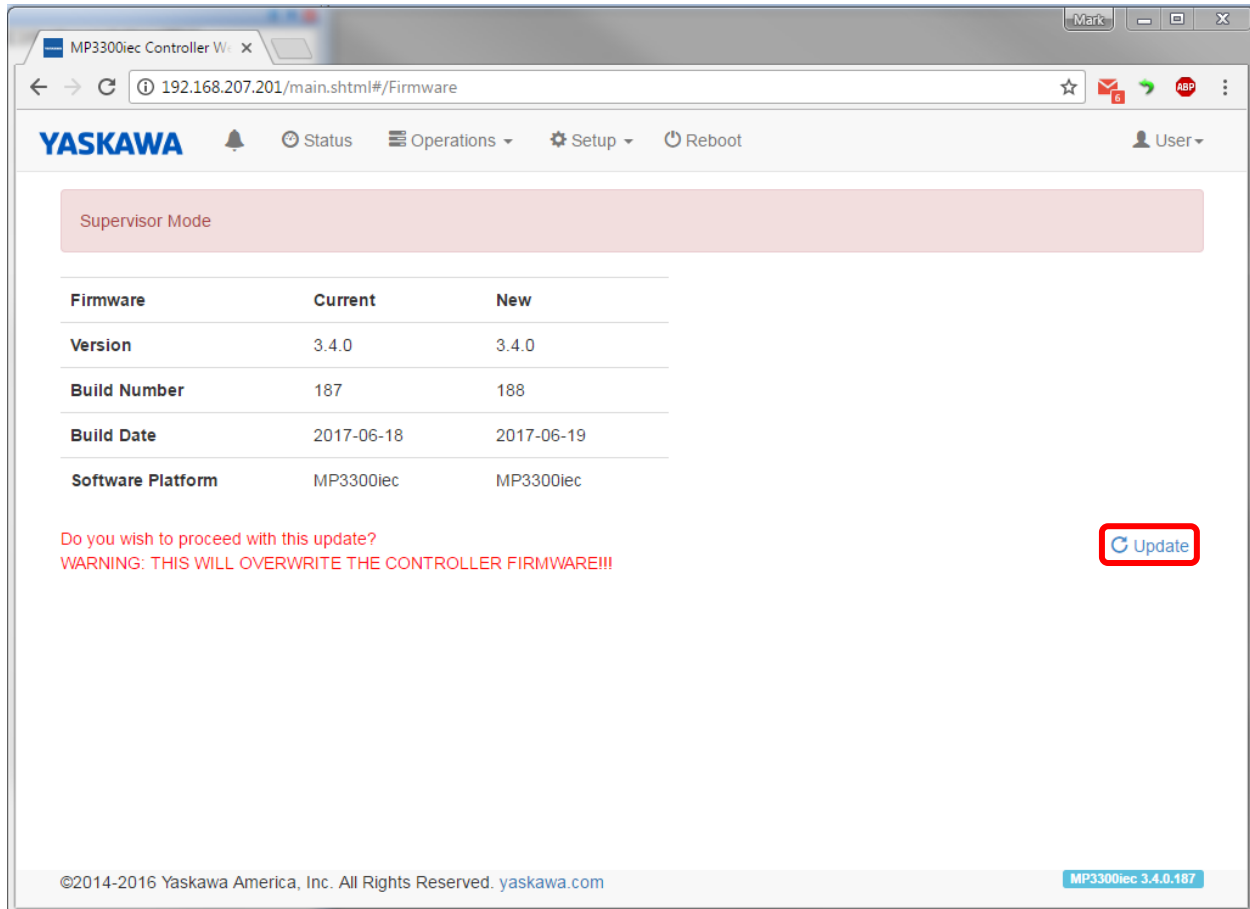


Title: Updating MPiec Firmware using WebUI

Product(s): MP3200iec, MP3300iec, MP2600iec, Sigma-7Siec

Doc. No. PN.MPIEC.01

After the firmware file is uploaded to the controller, a comparison of the existing and new versions is shown. To continue with the update, choose the “Update” option on the page.



An alert will appear indicating that the firmware update is in progress. Do not turn the power off on the controller while the firmware update is in progress.

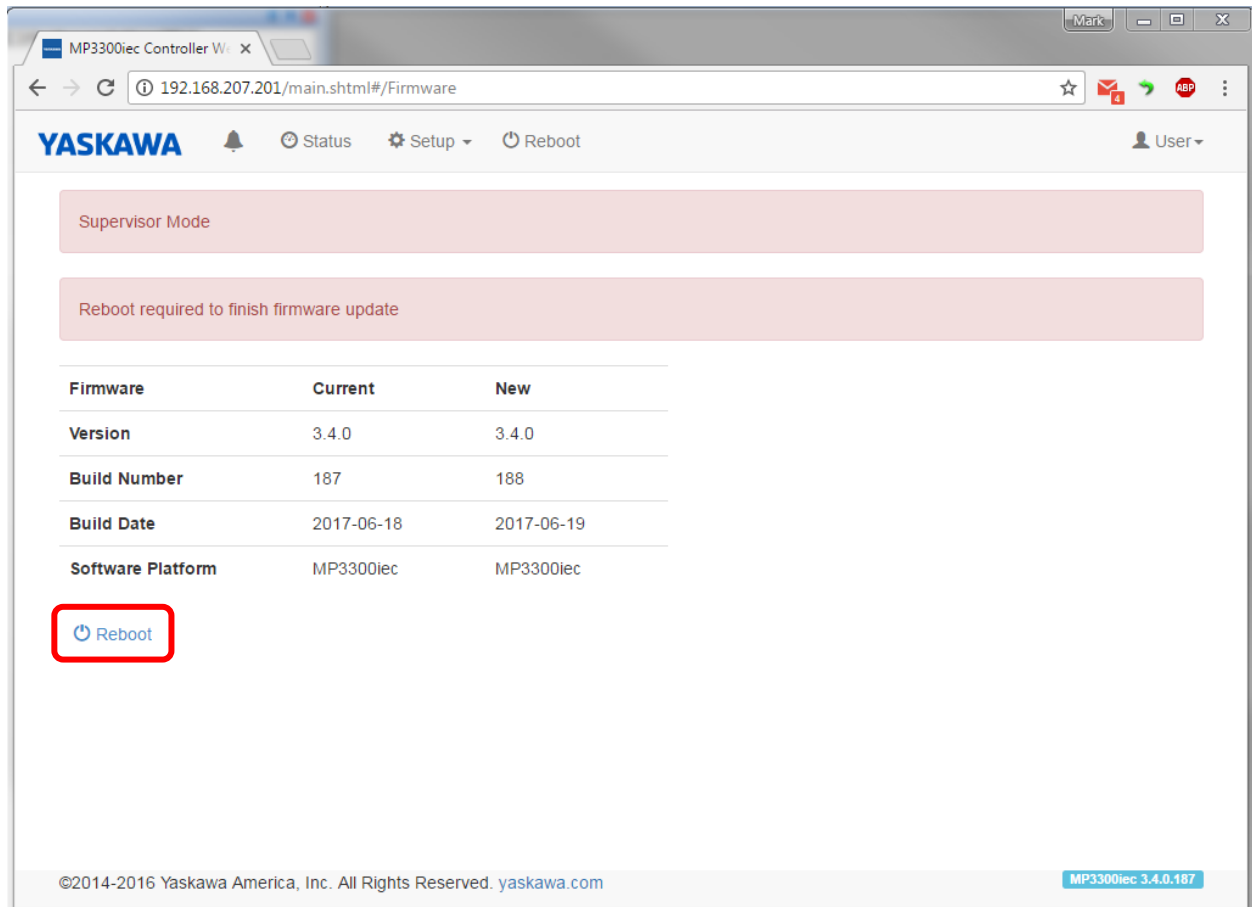
Firmware update in progress

Title: Updating MPiec Firmware using WebUI

Product(s): MP3200iec, MP3300iec, MP2600iec, Sigma-7Siec

Doc. No. PN.MPIEC.01

After the firmware installation is complete, an alert will indicate that a reboot is required to finish the update. Choose the “Reboot” option to reboot the controller and complete the installation process.



After rebooting, WebUI will return to the home screen and will indicate that new firmware has been installed on the controller:

New firmware!