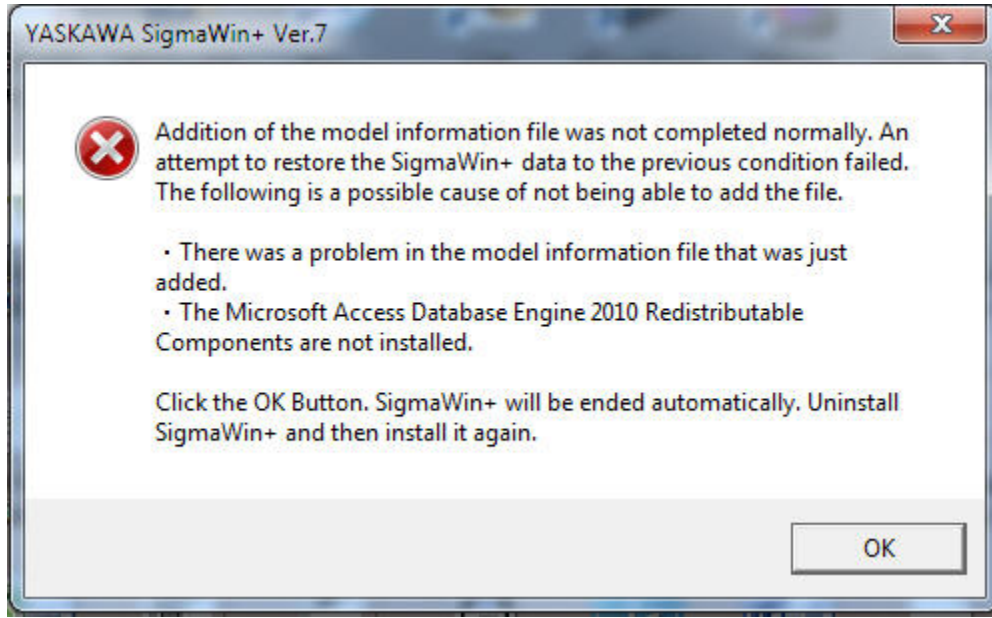


1. Microsoft Access Database Engine Redistributable Components must be in your PC before installing SigmaWin+ Ver.7
2. If you install SigmaWin+ Ver.7 without the Microsoft Access database engine, you will get the following error message when attempting to open SigmaWin+ Ver.7:



3. Uninstall SigmaWin+ Ver.7.
4. To get the Microsoft Access database engine, you can go to the Microsoft website and download the file "AccessDatabaseEngine.exe". Install it on your PC.
5. After installing the Access Database Engine, you can reinstall SigmaWin+ Ver.7 by opening the file "SigmaWinPlus7_Installer.exe".

Special Notes for Upgrading to SigmaWin+ Version 7.23

Changes in the Operating Environment

The PC operating environment in which SigmaWin+ version 7.23 can be installed and executed has changed.

- Updates must be installed for PCs running Windows 7 SP1 and Windows 8.1 in which runtime updates have not been installed.
- Customers who cannot use the update and customers who use Windows 7 (not SP1) or Windows 8 cannot use version 7.23. Please contact us to obtain previous versions.
- MPE720 Ver. 7 also has SigmaWin+ linkage functions, so the same precautions about the operating system as those for SigmaWin+ version 7.23 apply.

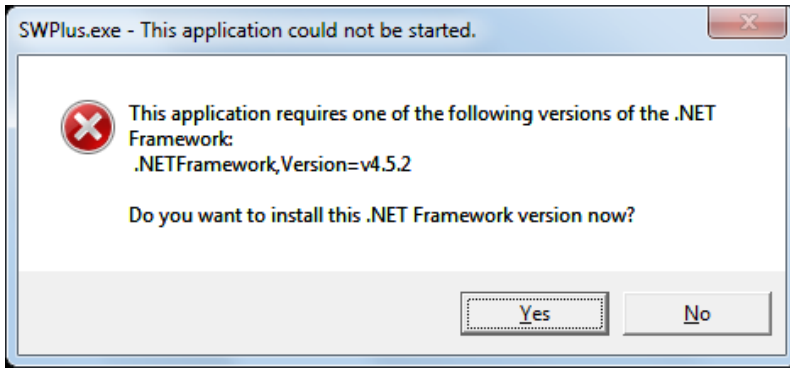
Operating Environment

	SigmaWin+ Ver. 7.23	SigmaWin+ Ver. 7.22 or earlier
OS	Windows 10, Windows 8.1, Windows 7 SP1	Windows 10, Windows 8, Windows 8.1, Windows 7
Software Environment	Microsoft .NET Framework 4.5.2, 4.6	Microsoft .NET Framework 4.5, 4.6

Detailed Operating Conditions

OS	Required Software	Remarks
Windows 7	.NET Framework 4.5.2	Use the accessory NDP452-KB2901907-x86-x64-AllOS-ENU.exe. This changed because support for .NET Framework 4.5.0 has ended.
	Service Pack 1	Service Pack 1 is required to install KB2999226. Execute the update. Reference URL: https://support.microsoft.com/en-us/help/2919355/windows-rt-8-1--windows-8-1--and-windows-server-2012-r2-update-april-2
	KB2999226	Refer to the following URL and execute the C runtime update for the VS2015 application. Reference URL: https://support.microsoft.com/en-us/help/2999226/update-for-universal-c-runtime-in-windows
Windows 8.1	.NET Framework 4.5.2	Use the accessory NDP452-KB2901907-x86-x64-AllOS-ENU.exe. This changed because support for .NET Framework 4.5.0 has ended.
	KB2919442	KB2919442 is required to install KB2919355. Refer to the following URL and execute the update. Reference URL: https://support.microsoft.com/en-us/help/2919442/march-2014-servicing-stack-update-for-windows-8-1-and-windows-server-2
	KB2919355	KB2919355 is required to install KB2999226. Refer to the following URL and execute the update. Reference URL: https://support.microsoft.com/en-us/help/2919355/windows-rt-8-1--windows-8-1--and-windows-server-2012-r2-update-april-2
	KB2999226	Refer to the following URL and execute the C runtime update for the VS2015 application. Reference URL: https://support.microsoft.com/en-us/help/2999226/update-for-universal-c-runtime-in-windows
Windows 10	-	.NET Framework 4.6 is pre-installed with Windows 10. (Compatible with .NET Framework 4.5.2.)

The following message will be displayed when SigmaWin+ Ver. 7.23 starts and if .NET Framework 4.5.2 is not installed. Use NDP452-KB2901907-x86-x64-AllOS-ENU.exe, which comes with the installer, to execute the update.



The following message will be displayed when SigmaWin+ Ver. 7.23 starts and if the runtime update is not installed. The customer must check if the software described in the operating condition details is installed and install it, if necessary.

