

Title: How to Install SigmaWin+ Version 7 USB Driver

Product(s): Sigma-7 Series Products, SigmaWin+ Version 7

Doc. No. TN.SIGMA7.01

Application Overview

This application note instructs the user on the location of the SigmaWin+ Version 7 USB driver and steps to update the driver.



Figure 1: SigmaWin+ Version 7 Splash Page

Products Used

Component	Product and Model Number
Servopack	Sigma-7 Series
Motor	Sigma-7 Series
Software	SigmaWin+ Version 7
USB Cable	JZSP-CVS06-02-E for CN7 Connection from Servopack to PC

Title: How to Install SigmaWin+ Version 7 USB Driver

Product(s): Sigma-7 Series Products, SigmaWin+ Version 7

Doc. No. TN.SIGMA7.01

Application Highlights

SIGMA-5

Previously, SigmaWin+ Version 5 installed the driver within the following file location upon installation of the software:

- C:\Program Files (x86)\SigmaIDE\SigmaWinPlus\Driver\USB\x64



- For further USB location details when using a 32-bit or 64-bit processor, click:
 - [Is there more information available on installing the SigmaWin+ USB driver for Sigma-5 amplifiers?](#)

SIGMA-7

SigmaWin+ Version 7 does not install the USB Driver at a known location as in previous versions. **The driver is located within the downloaded zipped file from www.yaskawa.com.**

Application Requirements

SigmaWin+ Version 7

Link for download: <https://www.yaskawa.com/products/motion/sigma-7-servo-products/software-tools/sigmawin-plus-7>

Title: How to Install SigmaWin+ Version 7 USB Driver

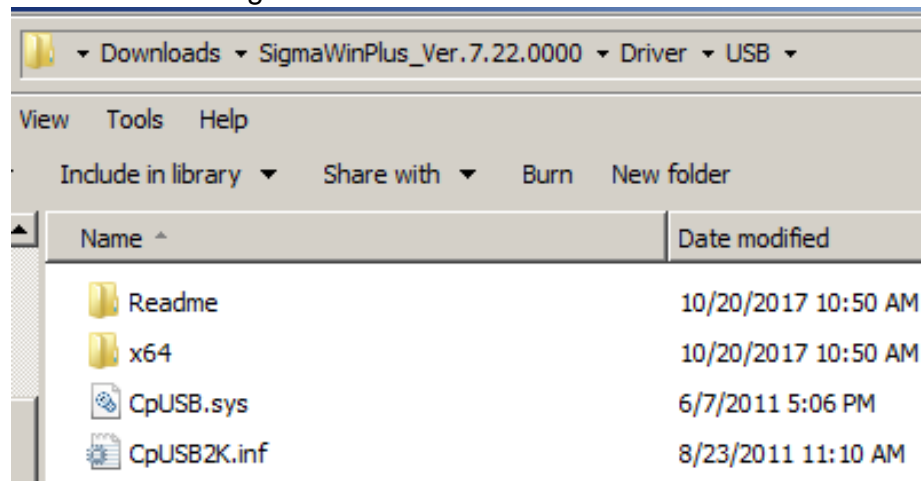
Product(s): Sigma-7 Series Products, SigmaWin+ Version 7

Doc. No. TN.SIGMA7.01

Implementation

LOCATION OF USB DRIVER FOLDER

1. Download SigmaWin+ Version 7
 - a. See link above
2. Go to the downloaded file location and extract the zipped file
 - a. Typically this is found in the 'Downloads' folder
3. Open the folder and navigate to find the USB Folder



UPDATING/INSTALLING THE DRIVER

1. Plug in the USB cable from the PC to the Servopack
2. Click Start on the PC, type in 'Device Manager' in the Search window and hit enter

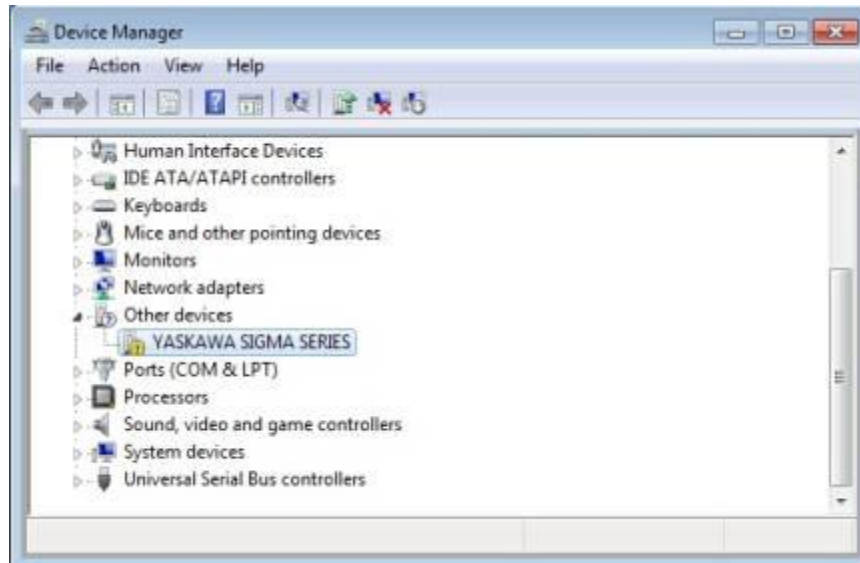


Title: How to Install SigmaWin+ Version 7 USB Driver

Product(s): Sigma-7 Series Products, SigmaWin+ Version 7

Doc. No. TN.SIGMA7.01

3. Navigate to the 'Other devices' tab and find 'YASKAWA SIGMA SERIES'



- a.
4. **Note:**
- a. If 'Other devices' does not find 'YASKAWA SIGMA SERIES', please check in the 'Universal Serial Bus controllers' tab

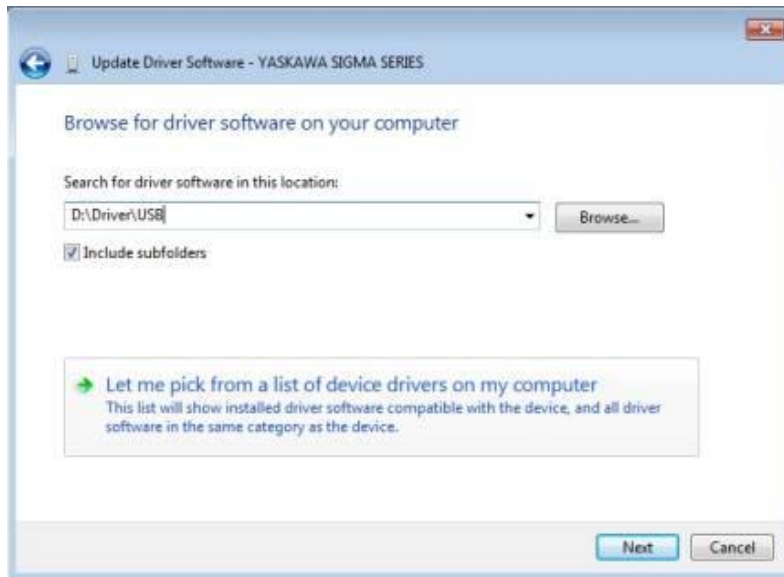


- b.
5. Double-Click "YASKAWA SIGMA SERIES", Click "Update Driver"
6. Click "Browse my computer for driver software"
7. Select the folder from step 3 in previous section
"C:\Users\user_name\Downloads\SigmaWinPlus_Ver.7.22.0000\Driver\USB"
- a. Select "Include subfolders" and then Click Next

Title: How to Install SigmaWin+ Version 7 USB Driver

Product(s): Sigma-7 Series Products, SigmaWin+ Version 7

Doc. No. TN.SIGMA7.01



- 8.
9. When "Windows Security" appears, Click "Install this driver software anyway"
10. When the installation is completed, click Close



- 11.
12. The driver installation is complete