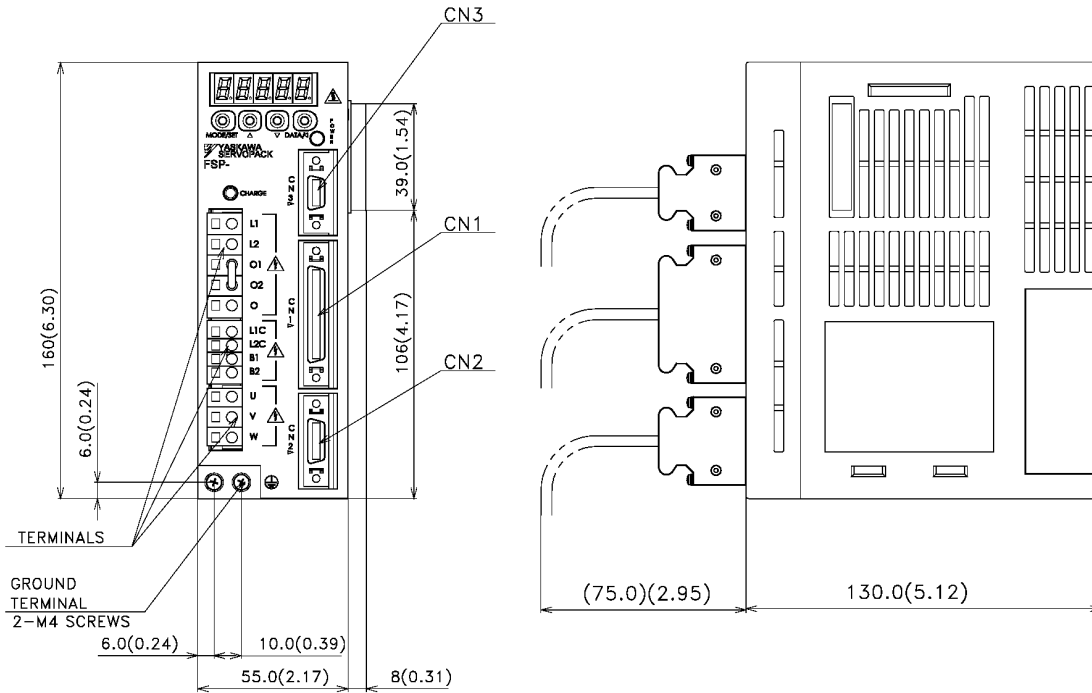


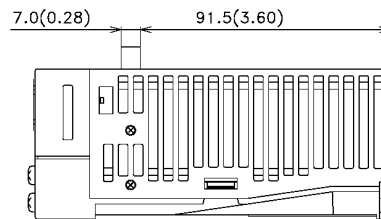
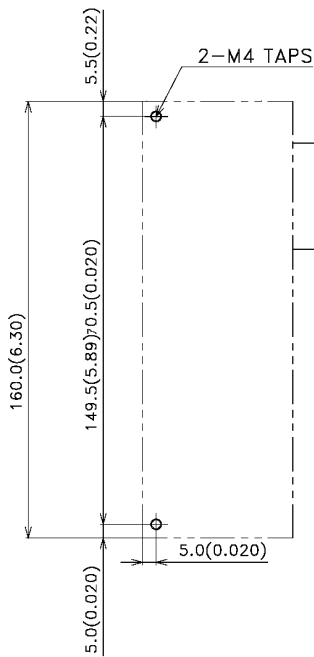
## Dimensions in inches (mm)

### FSP Servo Amplifier (Standard)

- FSP-A3A□□ to -02A□□ (200V Single-phase, 30 to 200W) and
- FSP-A3B□□ to -01B□□ (100V Single-phase, 30 to 100W)



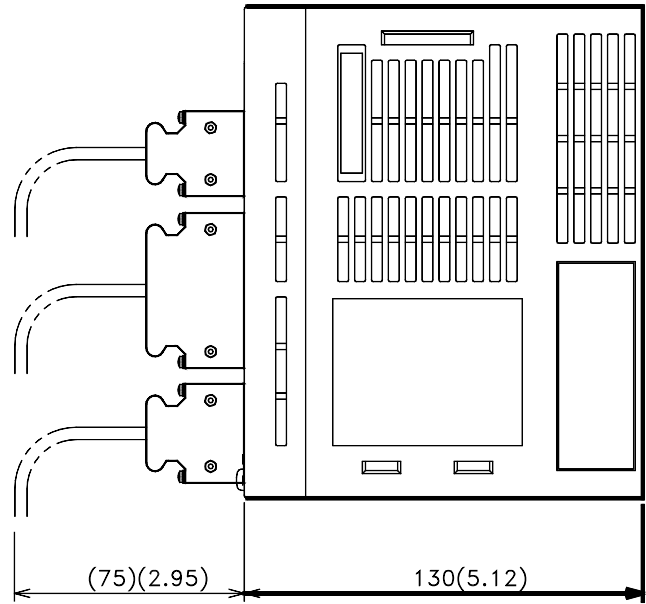
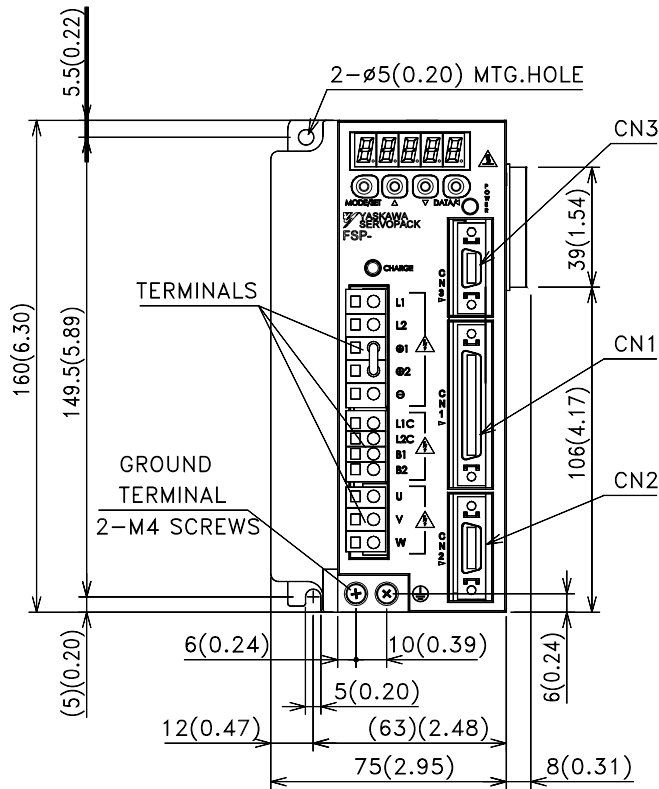
#### MOUNTING LOCATION



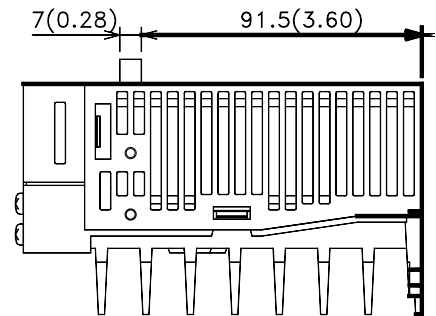
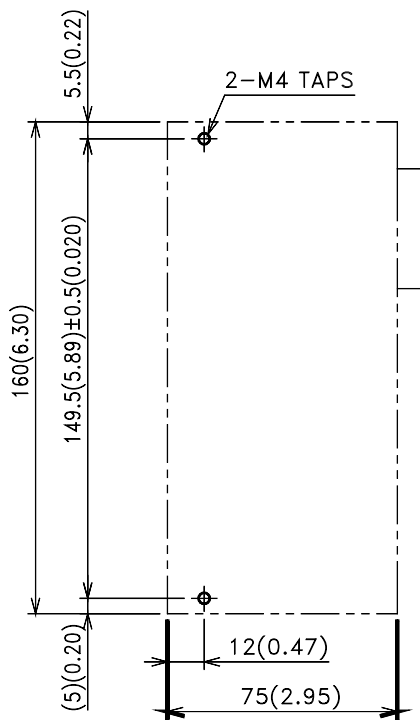
APPROX.MASS:0.8kg

# 100/200V FSP Servo System

- FSP-04A□□ (200V Single-phase, 400W) and
- FSP-02B□□ (100V Single-phase, 200W)



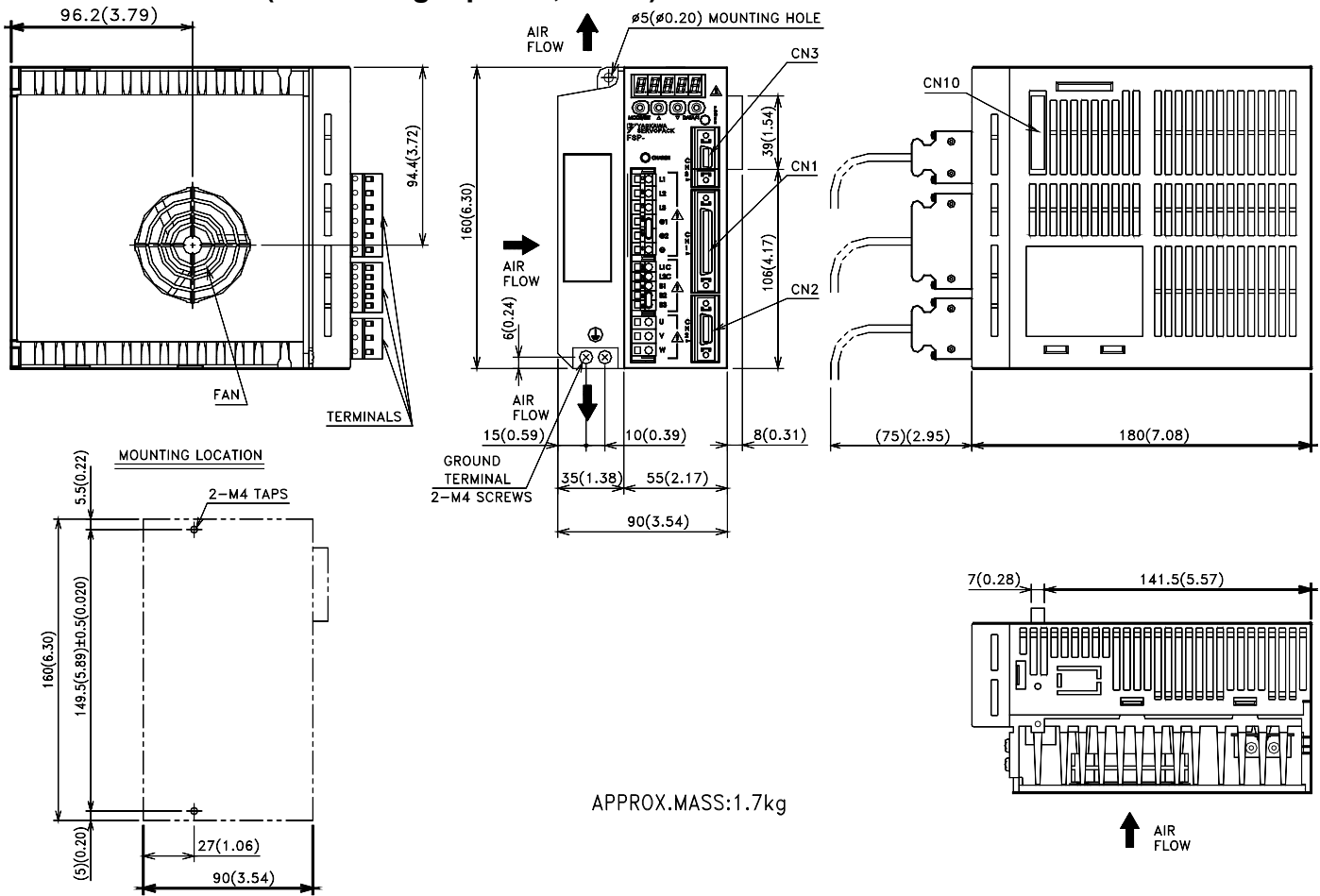
## MOUNTING LOCATION



APPROX.MASS:1.1kg

# 100/200V FSP Servo Systems

- FSP-10A□□ (200V Three-phase, 1.0kW)
- FSP-08A□□-S (200V\* Single-phase, 750W)

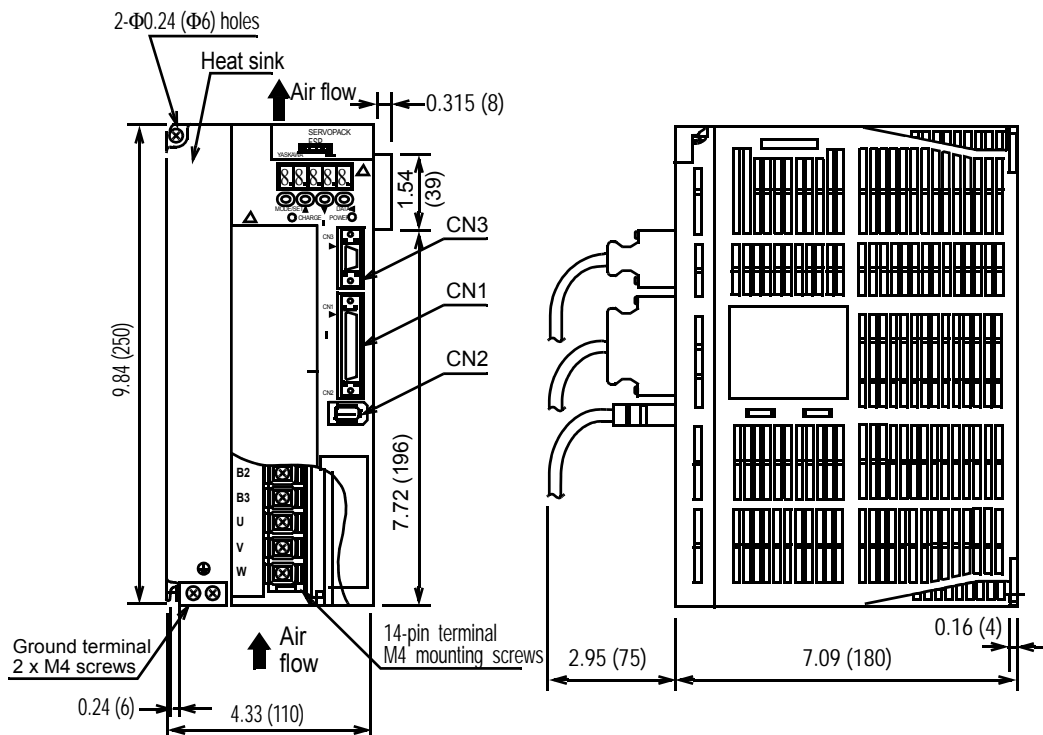


APPROX.MASS:1.7kg

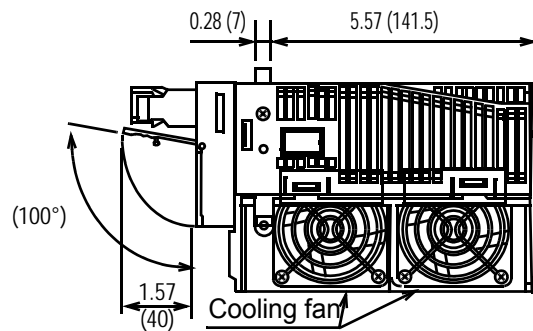
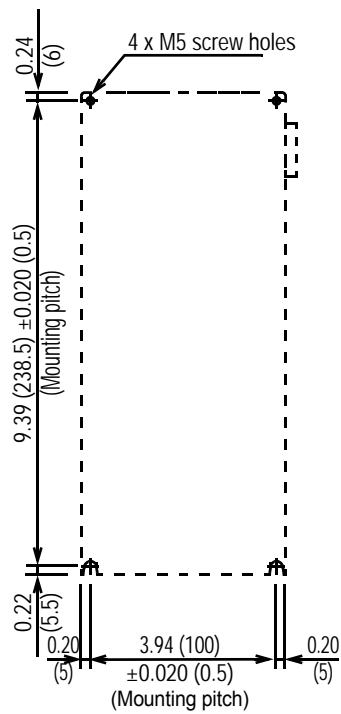
\* Rating 200 to 230V<sub>ac</sub> +10% -5%

# 100/200V FSP Servo System

- FSP-20A□□, 30A□□ (200V Three-phase, 2.0kW, 3.0kW)
- FSP-15A□□-S (200V Single-phase, 1.5 kW)\*



Mounting Hole Diagram



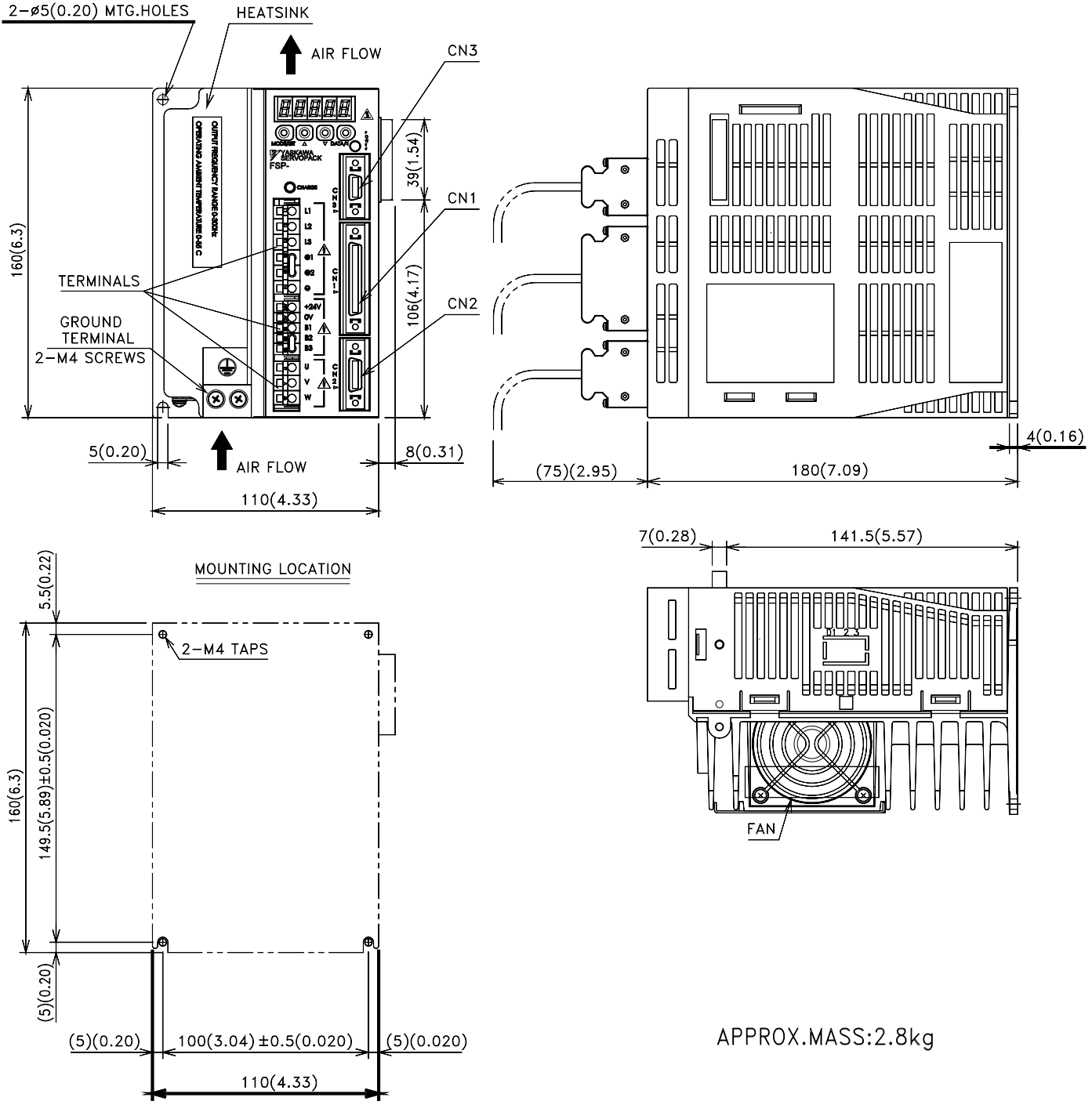
Approximate mass: 8.38lb (3.8kg)

\* Rating: 200 to 230V<sub>ac</sub> +10%, -5%

# Dimensions in inches (mm)

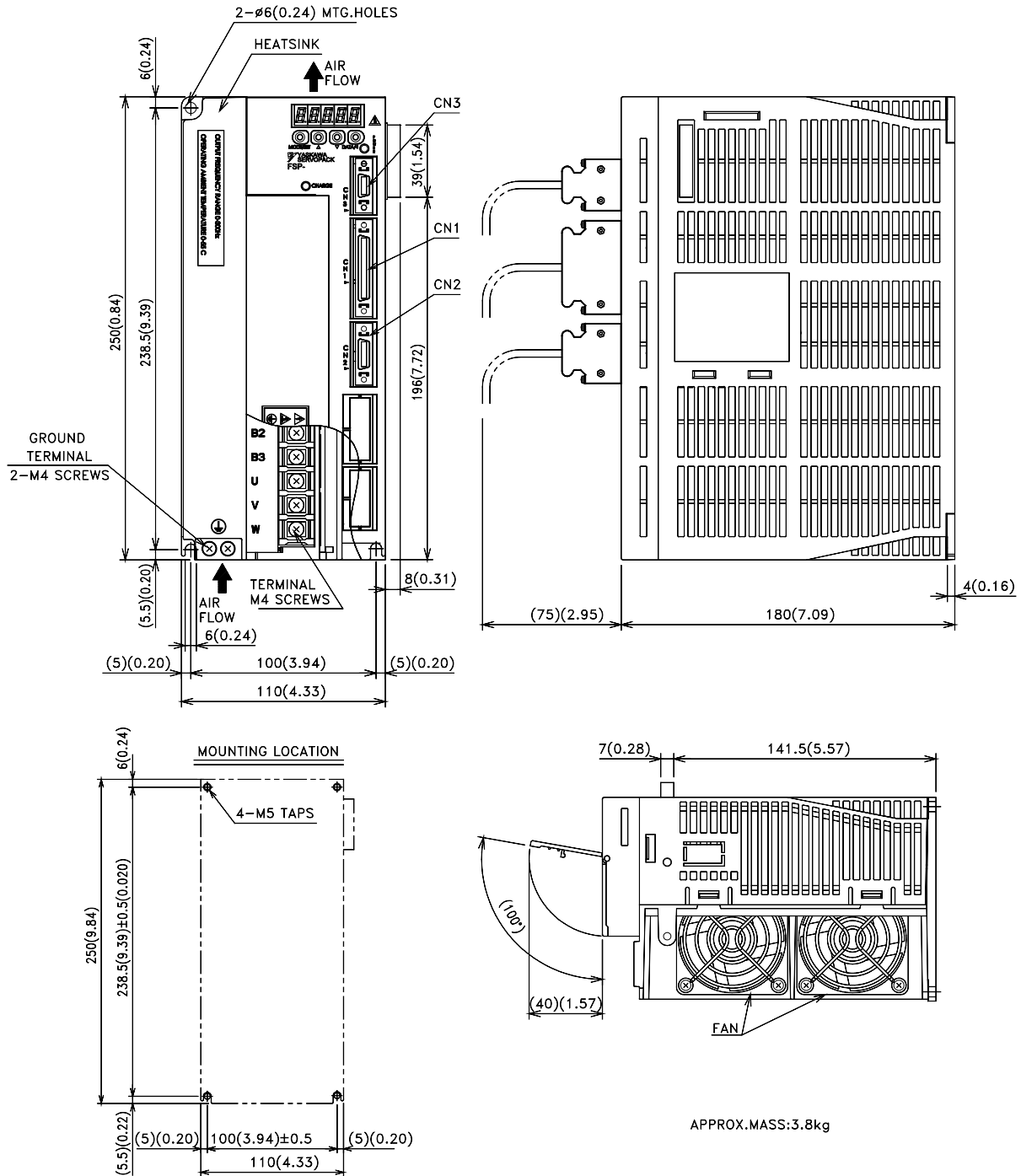
## FSP Servo Amplifier

- FSP-05D□□, -10D□□, -15D□□ (400V Three-phase, 0.5kW to 1.5kW)



# 400V FSP Servo Systems

- FSP-20□□, 30□□ (400V Three-phase, 2.0kW, 3.0kW)



- FSP-50D□□ (400V Three-phase, 5.0kW)

