

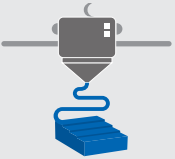
Yaskawa Compass™

Your CNC Navigator



Yaskawa Compass™ is the direct route to a more effective operator interface, pointing CNC machine builders to a solution that is quick and easy to implement, even easier to customize.

Ready for Any G-code Application



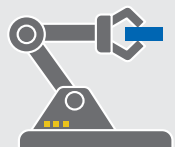
3D Printing/Additive Manufacturing



Routing/Shape Cutting



Laser/Plasma/Waterjet Cutting



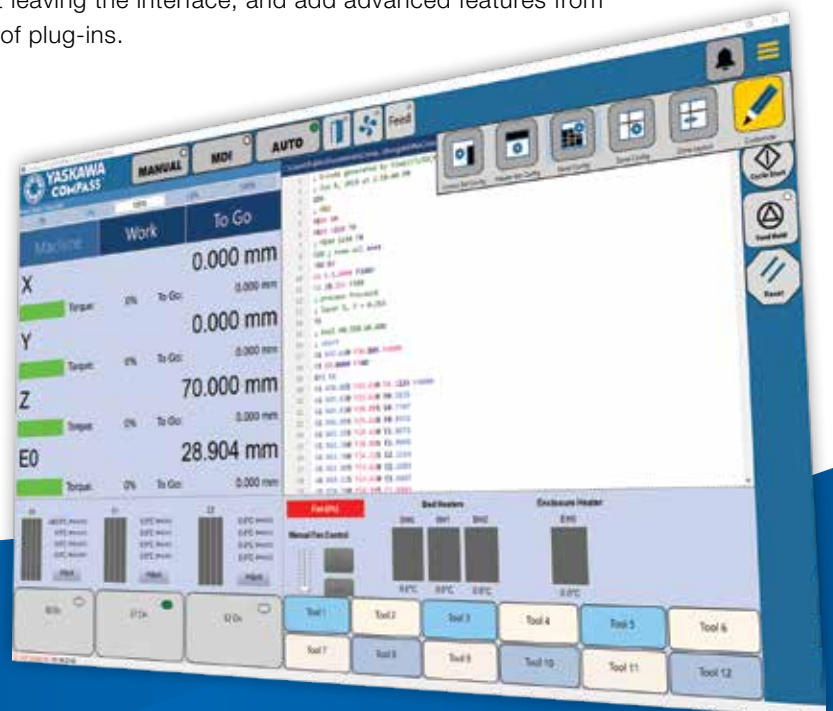
Plus Advanced Robotic Motion

Machine Interface Made Easy

Easy is the key word behind Yaskawa Compass™, the machine interface software that offers a clear, professional and user-friendly roadmap for machine operation. It's quick to implement in any CNC advanced manufacturing application, from machining to shape cutting, additive manufacturing/3D printing and beyond.

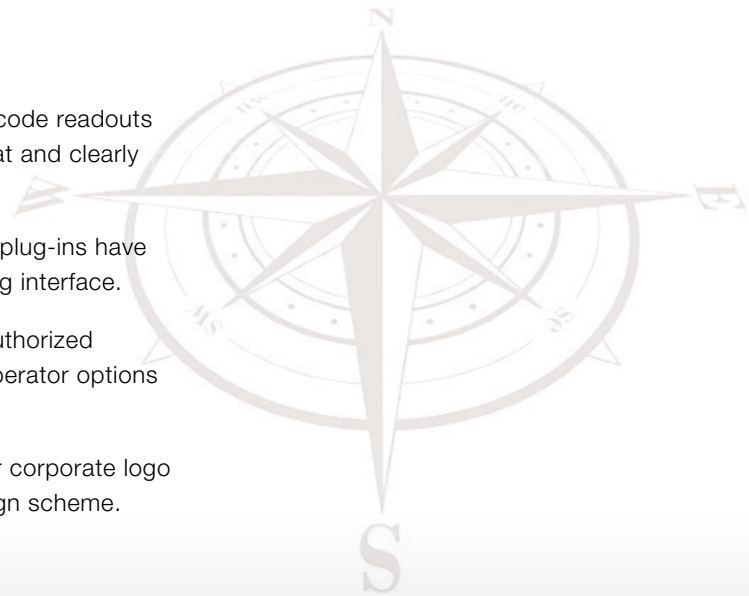
Machine operators naturally understand Yaskawa Compass at a glance. Machine developers appreciate how it extends easily beyond the basics with built-in customization options. Reconfigure screens without leaving the interface, and add advanced features from a constantly growing library of plug-ins.

YASKAWA COMPASS™



4 Points That Make Yaskawa Compass a Better Interface

- 1 Simple structure** status displays, pushbutton operators and code readouts automatically fit into a flexible column format, for a naturally neat and clearly visible screen.
- 2 Style library** an attractive set of colors, shapes, graphics and plug-ins have been pre-built, making it simpler to create a professional-looking interface.
- 3 On-the-fly amendments** password-protection prevents unauthorized changes, while allowing advanced users to edit displays and operator options in real time. No compiling needed!
- 4 Make it your own** choose your company colors and add your corporate logo to conform to your company's brand standard or machine design scheme.



One Source For Easy Automation, Backed by Solid Support

Yaskawa Compass offers seamless, simple integration with the automation industry's most popular family of motion control solutions.

- **MotionWorksIEC** software for powerful, efficient programming of any automated motion, from individual servo axes to complex multi-axis robots
- **MP3300iec** controllers set the world standard for performance in complex shape-cutting and 3D printing applications
- **Sigma-7** servo systems pack the industry's best precision and power into the smallest, most reliable package

Best of all, the assistance of Yaskawa's 24-nation network of application engineers assures you of success, from initial machine design to support for individual end users in the field.

